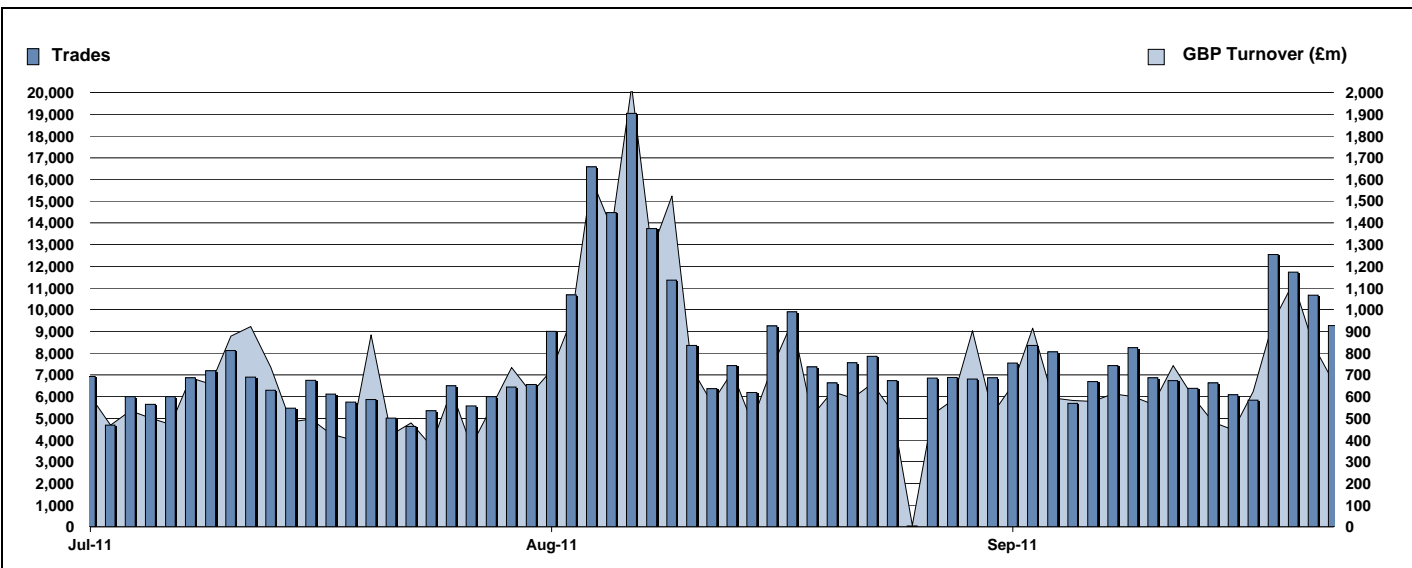


Exchange Traded Funds and Exchange Traded Products

Monthly statistics - September 2011



DAILY TRADING



MAIN INDICATORS

	LISTED INSTRUMENTS		TRADING					
	LISTED END OF MONTH	MONTH NEW LISTED	August-11		September-11		2011 YTD	
			Trades	GBP Turnover	Trades	GBP Turnover	Trades	GBP Turnover
ETF - DEVELOPED MARKET	254	6	91,164	7,014,568,476	64,643	4,645,141,551	568,108	44,751,276,693
ETF - EMERGING MARKETS	105	9	29,229	2,267,160,119	24,533	1,919,042,673	175,552	14,845,985,237
ETF - FIXED INCOME	63	2	16,281	2,474,049,845	14,682	2,098,299,552	130,045	13,882,706,087
ETF - SHORT & LEVERAGED	48	-	8,493	603,855,622	7,373	571,429,116	36,803	2,619,636,282
ETF - Others	37	-	3,330	170,388,707	1,807	134,654,275	23,693	1,340,192,522
ETC	302	-	55,702	5,852,553,608	47,355	4,309,765,315	404,102	30,092,859,544
ETN	46	-	535	68,270,267	468	65,615,036	3,834	421,265,882
TOTAL	855	17	204,734	18,450,846,643	160,861	13,743,947,519	1,342,137	107,953,922,247

MOST TRADED IN THE MONTH BY TURNOVER

Name	TIDM	ISIN	GBP Turnover	% Total
1 ISHARES FTSE 100	ISF	IE0005042456	1,016,156,329	7.3%
2 ETFS PHYSICAL GOLD	PHAU	JE00B1VS3770	930,724,802	6.6%
3 (GBS) SEC UND ZERO CPN NTS	GBS	GB00B00FHZ82	634,131,796	4.5%
4 ETFS PHYSICAL GOLD £	PHGP	JE00B1VS3770	466,631,758	3.3%
5 ISHARES MSCI EMERGING MARKET	IEEM	IE00B0M63177	432,816,220	3.1%
6 S&P 500	IDUS	IE0031442068	317,809,441	2.3%
7 SOURCE PHYSICAL GOLD P-ETC CERT SGLD	IE00B579F325	309,261,161	2.2%	
8 ISHARES EURO STOXX 50	EUE	IE0008471009	293,481,540	2.1%
9 ISHARES S&P 500	IUSA	IE0031442068	226,362,221	1.6%
10 ETFS AGRICULTURE DJ-UBSCI	AIGA	GB00B15KYH63	209,901,072	1.5%

MOST TRADED IN THE MONTH BY TRADES

Name	TIDM	ISIN	Trades	% Total
1 ISHARES FTSE 100	ISF	IE0005042456	19,931	12.4%
2 ETFS PHYSICAL GOLD	PHAU	JE00B1VS3770	6,198	3.8%
3 DB X-TRACKERS FTSE 100 ETF	XUKX	LU0292097234	4,468	2.8%
4 (GBS) SEC UND ZERO CPN NTS	GBS	GB00B00FHZ82	3,608	2.2%
5 ISHARES FTSE 250	MIDD	IE00B00FV128	3,160	2.0%
6 ISHARES MSCI WORLD	IWRD	IE00B0M62Q58	3,115	1.9%
7 ISHARES MSCI EMERGING MARKET	IEEM	IE00B0M63177	2,966	1.8%
8 ETFS PHYSICAL GOLD £	PHGP	JE00B1VS3770	2,582	1.6%
9 ISHARES S&P 500	IUSA	IE0031442068	2,505	1.6%
10 HSBC FTSE 100 ETF	HUKX	IE00B42T0061	2,164	1.3%

MOST TRADED IN THE YEAR 2011 BY TURNOVER

Name	TIDM	ISIN	GBP Turnover	% Total
1 ISHARES FTSE 100	ISF	IE0005042456	9,408,301,263	4.3%
2 ETFS PHYSICAL GOLD	PHAU	JE00B1VS3770	5,747,100,032	2.7%
3 S&P 500	IDUS	IE0031442068	3,405,243,174	1.6%
4 (GBS) SEC UND ZERO CPN NTS	GBS	GB00B00FHZ82	3,257,848,555	1.5%
5 ISHARES S&P 500	IUSA	IE0031442068	3,110,781,448	1.4%
6 ISHARES MSCI EMERGING MARKET	IEEM	IE00B0M63177	2,411,098,599	1.1%
7 SOURCE PHYSICAL GOLD P-ETC CERT SGLD	IE00B579F325	2,282,528,248	1.1%	
8 ISHARES EURO STOXX 50	EUE	IE0008471009	1,976,929,893	0.9%
9 ETFS PHYSICAL GOLD £	PHGP	JE00B1VS3770	1,796,121,600	0.8%
10 MSCI EMERGING MARKETS	IDEM	IE00B0M63177	1,622,933,491	0.7%

MOST TRADED IN THE YEAR 2011 BY TRADES

Name	TIDM	ISIN	Trades	% Total
1 ISHARES FTSE 100	ISF	IE0005042456	172,547	12.8%
2 ETFS PHYSICAL GOLD	PHAU	JE00B1VS3770	33,815	2.5%
3 ISHARES S&P 500	IUSA	IE0031442068	33,609	2.5%
4 ISHARES MSCI EMERGING MARKET	IEEM	IE00B0M63177	26,856	2.0%
5 DB X-TRACKERS FTSE 100 ETF	XUKX	LU0292097234	26,155	1.9%
6 ISHARES FTSE 250	MIDD	IE00B00FV128	26,028	1.9%
7 ISHARES FTSE UK DIVIDEND PLUS	IUKD	IE00B0M63060	22,928	1.7%
8 ISHARES MSCI JAPAN	IJPN	IE00B02KXH56	21,537	1.6%
9 (GBS) SEC UND ZERO CPN NTS	GBS	GB00B00FHZ82	21,199	1.6%
10 ETFS LEVERAGED CRUDE OIL	LOIL	JE00B2NFTJ73	21,001	1.6%

<http://www.londonstockexchange.com/statistics/specialist-issues/etfs-etps/etfs-etps.htm>

Copyright © 2011 London Stock Exchange plc. Registered in England and Wales No. 2075721. London Stock Exchange plc has used all reasonable efforts to ensure that the information contained in this publication is correct at the time of going to press, but shall not be liable for decisions made in reliance on it. London Stock Exchange and the coat of arms device are registered trademarks of London Stock Exchange plc.