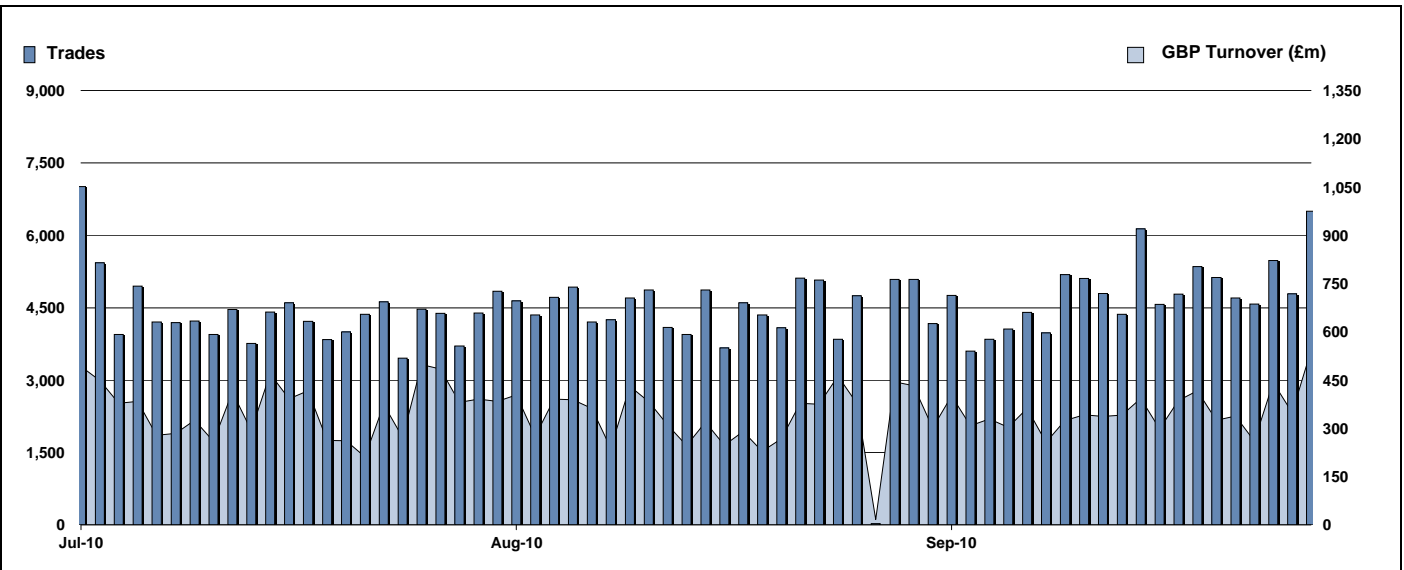


Exchange Traded Funds and Exchange Traded Products

Monthly statistics - September 2010



DAILY TRADING



MAIN INDICATORS

	LISTED INSTRUMENTS		TRADING					
	LISTED END OF MONTH	MONTH NEW LISTED	August-10		September-10		2010 YTD	
			Trades	GBP Turnover	Trades	GBP Turnover	Trades	GBP Turnover
ETF - DEVELOPED MARKET	117	-	41,622	2,805,099,418	45,360	2,967,348,728	411,671	32,725,872,414
ETF - BONDS	33	-	9,337	1,211,173,111	10,088	1,148,859,277	90,643	9,245,701,155
ETF - EMERGING MARKETS	40	-	9,461	612,301,287	11,358	725,458,621	99,136	8,462,976,136
ETF - STYLE	7	-	209	41,791,444	141	30,128,237	2,191	399,738,572
OTHERS	71	-	4,794	250,911,866	5,681	304,181,122	45,272	2,566,648,164
ETC	207	-	27,744	2,196,076,839	29,065	2,227,676,246	282,561	21,188,250,252
ETN	29	-	510	34,530,144	596	42,038,254	2,522	172,690,569
TOTAL	504	-	93,677	7,151,884,109	102,289	7,445,690,485	933,996	74,761,877,261

MOST TRADED IN THE MONTH BY TURNOVER

Name	TIDM	ISIN	GBP Turnover	% Total
1 ISHARES FTSE 100	ISF	IE0005042456	755,172,364	9.7%
2 ETFs PHYSICAL GOLD	PHAU	JE00B1VS3770	450,621,358	5.8%
3 GOLD BULLION SECURITIES	GBS	GB00B00FHZ82	330,981,413	4.2%
4 ETFs PHYSICAL PLATINUM	PHPT	JE00B1VS2W53	190,200,943	2.4%
5 ISHARES BARCAP # INDEX-LINKED GIL'INXG	IE00B1FZSD53		189,240,465	2.4%
6 ISHARES MSCI WORLD	IWRD	IE00B0M62Q58	184,839,462	2.4%
7 ISHARES S&P 500	IUSA	IE0031442068	184,304,456	2.4%
8 ISHARES MARKIT IBOXX # CORPORATESLXX	IE00B00FV011		166,438,363	2.1%
9 ISHARES FTSE 250	MIDD	IE00B00FV128	161,733,136	2.1%
10 S&P 500	IDUS	IE0031442068	151,799,051	1.9%

MOST TRADED IN THE MONTH BY TRADES

Name	TIDM	ISIN	Trades	% Total
1 ISHARES FTSE 100	ISF	IE0005042456	16,006	15.2%
2 ISHARES S&P 500	IUSA	IE0031442068	3,042	2.9%
3 ETFs PHYSICAL GOLD	PHAU	JE00B1VS3770	2,946	2.8%
4 ISHARES FTSE 250	MIDD	IE00B00FV128	2,900	2.8%
5 DB X-TRACKERS FTSE 100 ETF	XUKX	LU0292097234	2,162	2.1%
6 ISHARES MARKIT IBOXX # CORPORATE BSLXX	IE00B00FV011		2,067	2.0%
7 (GBS) SEC UND ZERO CPN NTS	GBS	GB00B00FHZ82	2,014	1.9%
8 ISHARES BARCAP # INDEX-LINKED GILTS INXG	IE00B1FZSD53		1,997	1.9%
9 ISHARES MSCI EMERGING MARKET	IEEM	IE00B0M63177	1,992	1.9%
10 ETFs LEVERAGED NATURAL GAS	LNGA	JE00B2NFTQ41	1,611	1.5%

MOST TRADED IN THE YEAR 2010 BY TURNOVER

Name	TIDM	ISIN	GBP Turnover	% Total
1 ISHARES FTSE 100	ISF	IE0005042456	8,059,189,862	10.7%
2 ETFs PHYSICAL GOLD	PHAU	JE00B1VS3770	4,630,156,560	6.1%
3 GOLD BULLION SECURITIES	GBS	GB00B00FHZ82	3,396,308,207	4.5%
4 ISHARES S&P 500	IUSA	IE0031442068	1,711,650,057	2.3%
5 MSCI EMERGING MARKETS SOURCE E'MXFS	IE00B3DWVS88		1,458,962,302	1.9%
6 ISHARES EURO STOXX 50	EUE	IE0008471009	1,424,129,507	1.9%
7 DB X-TRACKERS \$ MONEY MKT ETF CPIXUSD	LU0356691882		1,300,509,492	1.7%
8 ISHARES MARKIT IBOXX # CORPORATESLXX	IE00B00FV011		1,277,857,443	1.7%
9 ISHARES MSCI WORLD	IWRD	IE00B0M62Q58	1,276,372,812	1.7%
10 ETFs AGRICULTURE DJ-UBSCI	AIGA	GB00B15KYH63	1,260,775,878	1.7%

MOST TRADED IN THE YEAR 2010 BY TRADES

Name	TIDM	ISIN	Trades	% Total
1 ISHARES FTSE 100	ISF	IE0005042456	155,413	16.5%
2 ETFs PHYSICAL GOLD	PHAU	JE00B1VS3770	30,205	3.2%
3 ISHARES S&P 500	IUSA	IE0031442068	27,060	2.9%
4 ISHARES MARKIT IBOXX # CORPORATE BSLXX	IE00B00FV011		22,234	2.4%
5 ETFs NATURAL GAS	NGAS	GB00B15KY104	20,880	2.2%
6 (GBS) SEC UND ZERO CPN NTS	GBS	GB00B00FHZ82	20,623	2.2%
7 ISHARES FTSE 250	MIDD	IE00B00FV128	19,720	2.1%
8 ISHARES BARCAP # INDEX-LINKED GILTS INXG	IE00B1FZSD53		18,528	2.0%
9 ETFs LEVERAGED NATURAL GAS	LNGA	JE00B2NFTQ41	18,032	1.9%
10 DB X-TRACKERS FTSE 100 ETF	XUKX	LU0292097234	16,623	1.8%

<http://www.londonstockexchange.com/statistics/specialist-issues/etfs-etps/etfs-etps.htm>

Copyright © April 2010 London Stock Exchange plc. Registered in England and Wales No. 2075721. London Stock Exchange plc has used all reasonable efforts to ensure that the information contained in this publication is correct at the time of going to press, but shall not be liable for decisions made in reliance on it. London Stock Exchange and the coat of arms device are registered trademarks of London Stock Exchange plc.