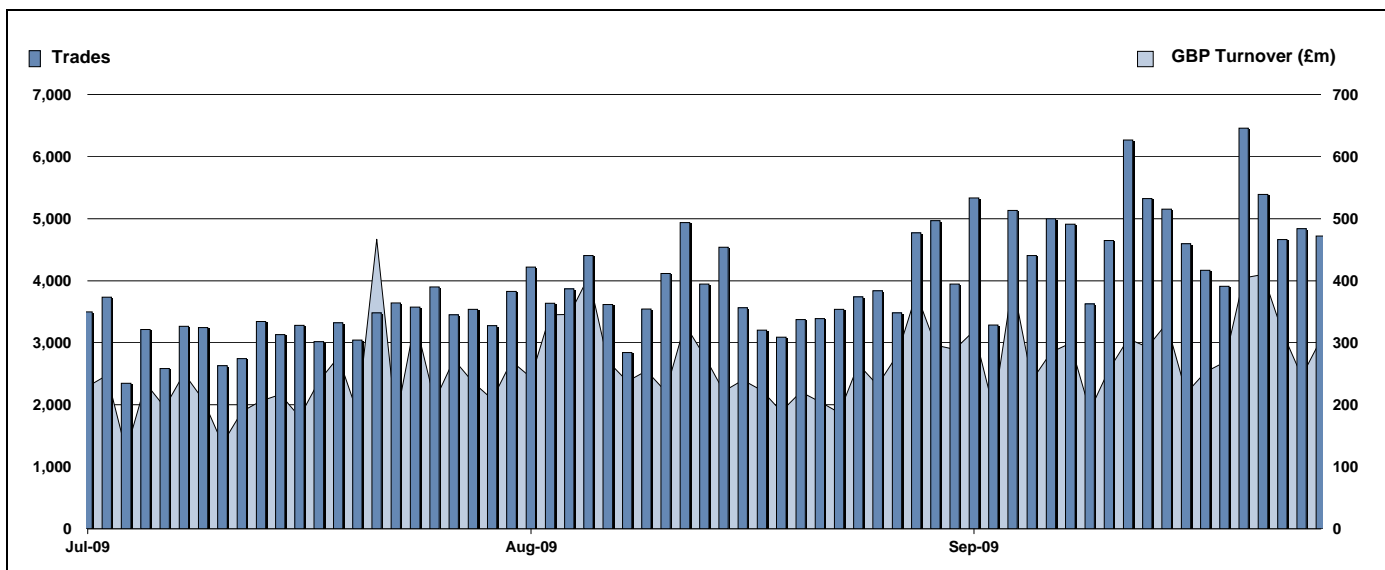


Exchange Traded Funds and Exchange Traded Products

Monthly statistics - September 2009



DAILY TRADING



MAIN INDICATORS

	LISTED INSTRUMENTS		TRADING					
	LISTED END OF MONTH	MONTH NEW LISTED	August-09		September-09		2009 YTD	
			Trades	GBP Turnover	Trades	GBP Turnover	Trades	GBP Turnover
ETF - DEVELOPED MARKET	85	7	30,569	2,117,229,172	40,074	2,401,658,500	306,097	21,825,565,455
ETF - BONDS	31	8	7,554	659,139,058	8,335	957,976,456	72,468	6,778,065,690
ETF - EMERGING MARKETS	37	1	6,298	512,343,845	8,866	704,256,957	59,477	4,856,977,748
ETF - STYLE	5	-	234	29,431,152	284	26,634,860	1,385	189,517,229
OTHERS	58	4	3,026	255,361,498	3,981	326,301,826	20,403	1,640,054,332
ETC	124	-	27,215	1,639,139,185	43,956	2,076,007,723	260,980	16,745,479,443
ETN	1	-	16	2,490,249	21	5,091,862	209	35,783,243
TOTAL	341	20	74,912	5,215,154,159	105,517	6,497,928,185	721,019	52,071,443,139

MOST TRADED IN THE MONTH BY TURNOVER

Name	TIDM	ISIN	GBP Turnover	% Total
1 ISHARES FTSE 100	ISF	IE0005042456	840,548,540	12.9%
2 ETFS NATURAL GAS	NGAS	GB00B15KY104	350,135,148	5.4%
3 ETFS PHYSICAL GOLD	PHAU	JE00B1VS3770	332,351,013	5.1%
4 GOLD BULLION SECURITIES	GBS	GB00B00FH282	238,370,353	3.7%
5 ISHARES GBP CORPORATE BOND	SLXX	IE00B00FV011	181,697,919	2.8%
6 ISHARES FTSE 250	MIDD	IE00B00FV128	156,647,585	2.4%
7 ISHARES S&P 500	IUSA	IE0031442068	151,903,859	2.3%
8 ISHARES MSCI EMERGING MARKET	IEEM	IE00B0M63177	139,771,561	2.2%
9 ISHARES EUR CORPORATE BOND	IBCX	IE0032523478	119,420,438	1.8%
10 ETFS LEVERAGED NATURAL GAS	LNGA	JE00B2NFTQ41	117,924,236	1.8%

MOST TRADED IN THE MONTH BY TRADES

Name	TIDM	ISIN	Trades	% Total
1 ISHARES FTSE 100	ISF	IE0005042456	17,965	17.0%
2 ETFS NATURAL GAS	NGAS	GB00B15KY104	12,004	11.4%
3 ETFS LEVERAGED NATURAL GAS	LNGA	JE00B2NFTQ41	5,244	5.0%
4 ETFS PHYSICAL GOLD	PHAU	JE00B1VS3770	4,855	4.6%
5 ISHARES GBP CORPORATE BOND	SLXX	IE00B00FV011	2,926	2.8%
6 ETFS LEVERAGED CRUDE OIL	LOIL	JE00B2NFTJ73	2,875	2.7%
7 ISHARES S&P 500	IUSA	IE0031442068	2,612	2.5%
8 ISHARES FTSE 250	MIDD	IE00B00FV128	2,248	2.1%
9 GOLD BULLION SECURITIES	GBS	GB00B00FH282	2,065	2.0%
10 FTSE 100 SHORT DAILY ETF	XUKS	LU0328473581	1,958	1.9%

MOST TRADED IN THE YEAR 2009 BY TURNOVER

Name	TIDM	ISIN	GBP Turnover	% Total
1 ISHARES FTSE 100	ISF	IE0005042456	9,031,347,889	17.3%
2 GOLD BULLION SECURITIES	GBS	GB00B00FH282	4,395,993,056	8.4%
3 ETFS PHYSICAL GOLD	PHAU	JE00B1VS3770	2,766,295,905	5.3%
4 ISHARES GBP CORPORATE BOND	SLXX	IE00B00FV011	1,679,740,133	3.2%
5 ISHARES S&P 500	IUSA	IE0031442068	1,622,949,563	3.1%
6 ISHARES DJ EURO STOXX 50	EUE	IE0008471009	1,171,943,698	2.3%
7 ETFS LEVERAGED CRUDE OIL	LOIL	JE00B2NFTJ73	1,153,129,694	2.2%
8 S&P 500	IDUS	IE0031442068	1,148,885,571	2.2%
9 ETFS CRUDE OIL	CRUD	GB00B15KXV33	953,911,270	1.8%
10 ISHARES # IDX LKD GILT	INXG	IE00B1FZSD53	946,154,070	1.8%

MOST TRADED IN THE YEAR 2009 BY TRADES

Name	TIDM	ISIN	Trades	% Total
1 ISHARES FTSE 100	ISF	IE0005042456	156,851	21.8%
2 GOLD BULLION SECURITIES	GBS	GB00B00FH282	32,423	4.5%
3 ISHARES S&P 500	IUSA	IE0031442068	31,663	4.4%
4 ETFS LEVERAGED CRUDE OIL	LOIL	JE00B2NFTJ73	31,524	4.4%
5 ISHARES GBP CORPORATE BOND	SLXX	IE00B00FV011	30,674	4.3%
6 ETFS NATURAL GAS	NGAS	GB00B15KY104	26,756	3.7%
7 ETFS PHYSICAL GOLD	PHAU	JE00B1VS3770	22,604	3.1%
8 ETFS CRUDE OIL	CRUD	GB00B15KXV33	18,187	2.5%
9 ETFS BRENT OIL	OILB	GB00B0CTWC01	15,262	2.1%
10 ETFS LEVERAGED NATURAL GAS	LNGA	JE00B2NFTQ41	15,251	2.1%

<http://www.londonstockexchange.com/statistics/specialist-issues/etfs-etps/etfs-etps.htm>

Copyright © September 2009 London Stock Exchange plc. Registered in England and Wales No. 2075721. London Stock Exchange plc has used all reasonable efforts to ensure that the information contained in this publication is correct at the time of going to press, but shall not be liable for decisions made in reliance on it. London Stock Exchange and the coat of arms device are registered trademarks of London Stock Exchange plc.