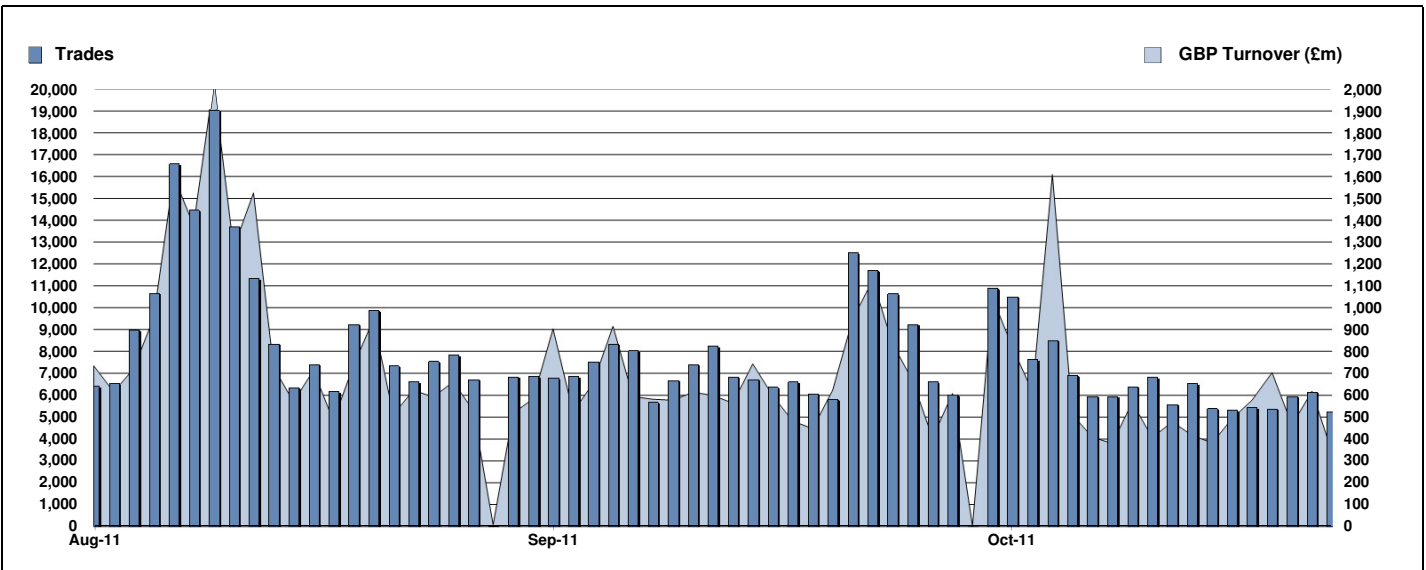


# Exchange Traded Funds and Exchange Traded Products

Monthly statistics - October 2011



## DAILY TRADING



## MAIN INDICATORS

	LISTED INSTRUMENTS		TRADING					
	LISTED END OF MONTH	MONTH NEW LISTED	September-11		October-11		2011 YTD	
			Trades	GBP Turnover	Trades	GBP Turnover	Trades	GBP Turnover
ETF - DEVELOPED MARKET	256	2	64,643	4,645,141,551	60,619	4,116,442,012	628,727	48,867,718,705
ETF - EMERGING MARKETS	106	1	24,533	1,919,042,673	20,795	1,655,884,313	196,347	16,501,869,550
ETF - FIXED INCOME	64	-	14,682	2,098,299,552	15,474	2,184,069,542	145,519	16,066,775,628
ETF - SHORT & LEVERAGED	48	-	7,373	571,429,116	8,312	381,856,456	45,115	3,001,492,738
ETF - Others	36	-	1,807	134,654,275	1,671	104,092,969	25,364	1,444,285,492
ETC	302	-	47,355	4,309,765,315	36,777	3,977,705,501	440,879	34,070,565,045
ETN	46	-	468	65,615,036	195	13,538,369	4,029	434,804,251
<b>TOTAL</b>	<b>858</b>	<b>3</b>	<b>160,861</b>	<b>13,743,947,519</b>	<b>143,843</b>	<b>12,433,589,162</b>	<b>1,485,980</b>	<b>120,387,511,409</b>

### MOST TRADED IN THE MONTH BY TURNOVER

Name	TIDM	ISIN	GBP Turnover	% Total
1 ETFs ALL COMMODITIES £ DJ-UBSCI	AIGC	GB00B15KY989	1,036,671,131	8.1%
2 ISHARES FTSE 100	ISF	IE0005042456	895,180,120	7.0%
3 ETFs PHYSICAL GOLD	PHAU	JE00B1VS3770	780,201,467	6.1%
4 ISHARES MSCI BRAZIL	IBZL	IE00B0M63516	345,304,196	2.7%
5 ISHARES FTSE UK GILTS 0-5 £	IGLS	IE00B4WXJK79	273,314,732	2.1%
6 MSCI EMERGING MARKETS	IDEM	IE00B0M63177	270,930,765	2.1%
7 ISHARES S&P 500	IUSA	IE0031442068	264,498,118	2.1%
8 ISHARES FTSE UK ALL STKS GILT	IGLT	IE00B1FZSB30	256,679,202	2.0%
9 S&P 500	IDUS	IE0031442068	249,762,543	2.0%
10 ISHARES MARKIT IBOXX EUR HIGH YIELDHYG	IE00B66F4759		245,498,226	1.9%

### MOST TRADED IN THE MONTH BY TRADES

Name	TIDM	ISIN	Trades	% Total
1 ISHARES FTSE 100	ISF	IE0005042456	16,379	11.4%
2 DB X-TRACKERS FTSE 100 ETF	XUKX	LU0292097234	4,179	2.9%
3 ETFs PHYSICAL GOLD	PHAU	JE00B1VS3770	3,911	2.7%
4 ISHARES FTSE 250	MIDD	IE00B00FV128	3,014	2.1%
5 ISHARES MSCI EMERGING MARKET	IEEM	IE00B0M63177	2,502	1.7%
6 ISHARES BARCAP £ INDEX-LINKED GILTS	INXG	IE00B1FZSD53	2,498	1.7%
7 ISHARES S&P 500	IUSA	IE0031442068	2,492	1.7%
8 ETFX FTSE 100 SUPER SHORT STRATEGY SUK2	IE00B4QNK008		2,458	1.7%
9 ISHARES MSCI WORLD	IWRD	IE00B0M62Q58	2,399	1.7%
10 ISHARES FTSE UK DIVIDEND PLUS	IUKD	IE00B0M63060	2,091	1.5%

### MOST TRADED IN THE YEAR 2011 BY TURNOVER

Name	TIDM	ISIN	GBP Turnover	% Total
1 ISHARES FTSE 100	ISF	IE0005042456	10,303,481,382	4.5%
2 ETFs PHYSICAL GOLD	PHAU	JE00B1VS3770	6,527,301,499	2.8%
3 S&P 500	IDUS	IE0031442068	3,655,005,717	1.6%
4 (GBS) SEC UND ZERO CPN NTS	GBS	GB00B00FHZ82	3,499,356,136	1.5%
5 ISHARES S&P 500	IUSA	IE0031442068	3,375,279,566	1.5%
6 ISHARES MSCI EMERGING MARKET	IEEM	IE00B0M63177	2,537,790,441	1.1%
7 SOURCE PHYSICAL GOLD P-ETC CERT SGLD	IE00B579F325		2,467,511,222	1.1%
8 ISHARES EURO STOXX 50	EUE	IE0008471009	2,062,200,154	0.9%
9 ETFs PHYSICAL GOLD £	PHGP	JE00B1VS3770	1,992,471,289	0.9%
10 ETFs ALL COMMODITIES £ DJ-UBSCI	AIGC	GB00B15KY989	1,959,040,056	0.9%

### MOST TRADED IN THE YEAR 2011 BY TRADES

Name	TIDM	ISIN	Trades	% Total
1 ISHARES FTSE 100	ISF	IE0005042456	188,926	12.7%
2 ETFs PHYSICAL GOLD	PHAU	JE00B1VS3770	37,726	2.5%
3 ISHARES S&P 500	IUSA	IE0031442068	36,101	2.4%
4 DB X-TRACKERS FTSE 100 ETF	XUKX	LU0292097234	30,334	2.0%
5 ISHARES MSCI EMERGING MARKET	IEEM	IE00B0M63177	29,358	2.0%
6 ISHARES FTSE 250	MIDD	IE00B00FV128	29,042	2.0%
7 ISHARES FTSE UK DIVIDEND PLUS	IUKD	IE00B0M63060	25,019	1.7%
8 (GBS) SEC UND ZERO CPN NTS	GBS	GB00B00FHZ82	22,948	1.5%
9 ETFs LEVERAGED CRUDE OIL	LOIL	IE00B2NFTJ73	22,702	1.5%
10 ISHARES MSCI JAPAN	IJPU	IE00B02KXH56	22,497	1.5%

<http://www.londonstockexchange.com/statistics/specialist-issues/etfs-etps/etfs-etps.htm>

Copyright © 2011 London Stock Exchange plc. Registered in England and Wales No. 2075721. London Stock Exchange plc has used all reasonable efforts to ensure that the information contained in this publication is correct at the time of going to press, but shall not be liable for decisions made in reliance on it. London Stock Exchange and the coat of arms device are registered trademarks of London Stock Exchange plc.