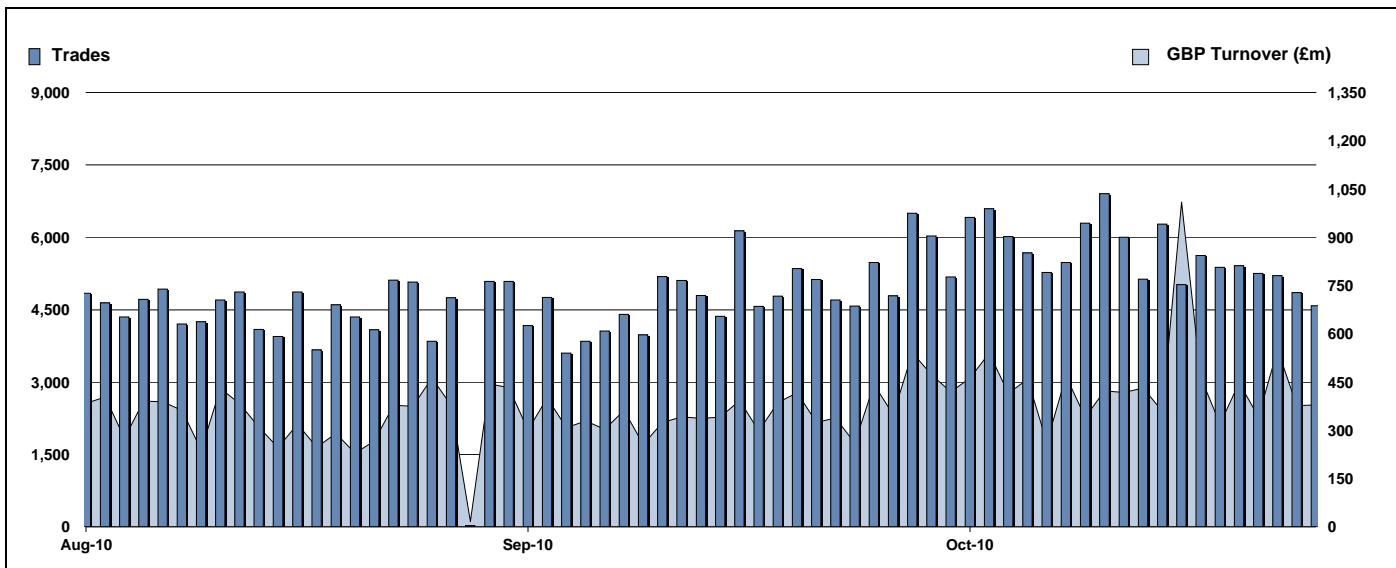


Exchange Traded Funds and Exchange Traded Products

Monthly statistics - October 2010



DAILY TRADING



MAIN INDICATORS

	LISTED INSTRUMENTS		TRADING					
	LISTED END OF MONTH	MONTH NEW LISTED	September-10		October-10		2010 YTD	
			Trades	GBP Turnover	Trades	GBP Turnover	Trades	GBP Turnover
ETF - DEVELOPED MARKET	117	-	45,360	2,967,348,728	43,912	2,669,789,003	455,583	35,395,661,417
ETF - BONDS	33	-	10,088	1,148,859,277	9,636	1,041,563,307	100,279	10,287,254,462
ETF - EMERGING MARKETS	40	-	11,358	725,458,621	16,545	2,103,686,377	115,681	10,566,662,513
ETF - STYLE	7	-	141	30,128,237	231	34,517,730	2,422	434,256,302
OTHERS	71	-	5,681	304,181,122	6,546	554,515,116	51,818	3,121,163,280
ETC	207	-	29,065	2,227,676,246	34,924	2,486,170,607	317,485	23,674,420,859
ETN	29	-	596	42,038,254	1,026	63,813,501	3,548	236,504,070
TOTAL	504	-	102,289	7,445,690,485	112,820	8,954,045,641	1,046,816	83,715,922,903

MOST TRADED IN THE MONTH BY TURNOVER

Name	TIDM	ISIN	GBP Turnover	% Total
1 MSCI EMERGING MARKETS SOURCE E'MXFS	ISF	IE00B3DWVS88	722,214,122	7.7%
2 ISHARES FTSE 100	ISF	IE0005042456	639,925,363	6.8%
3 ETFS PHYSICAL GOLD	PHAU	JE00B1VS3770	597,122,194	6.4%
4 GOLD BULLION SECURITIES	GBS	GB00B00FHZ82	413,637,255	4.4%
5 MSCI EMERGING MARKETS	IDEM	IE00B0M63177	270,247,037	2.9%
6 ISHARES S&P 500	IUSA	IE0031442068	184,310,495	2.0%
7 ISHARES MSCI KOREA	IKOR	IE00B0M63391	166,416,983	1.8%
8 ISHARES FTSE UK GILTS 0-5 #	IGLS	IE00B4WJK79	165,228,314	1.8%
9 ISHARES MSCI EMERGING MARKET	IEEM	IE00B0M63177	149,760,330	1.6%
10 ISHARES FTSE UK ALL STKS GILT	IGLT	IE00B1FZSB30	147,694,717	1.6%

MOST TRADED IN THE MONTH BY TRADES

Name	TIDM	ISIN	Trades	% Total
1 ISHARES FTSE 100	ISF	IE0005042456	12,410	10.5%
2 GOLD BULLION SECURITIES	GBS	GB00B00FHZ82	3,242	2.7%
3 ETFS PHYSICAL GOLD	PHAU	JE00B1VS3770	2,990	2.5%
4 DB X-TRACKERS FTSE 100 ETF	XUKX	LU0292097234	2,741	2.3%
5 S&P 500 VIX SOURCE ETF	VIXS	IE00B46HPB89	2,736	2.3%
6 ISHARES S&P 500	IUSA	IE0031442068	2,683	2.3%
7 ISHARES FTSE 250	MIDD	IE00B00FV128	2,615	2.2%
8 ISHARES MSCI EMERGING MARKET	IEEM	IE00B0M63177	2,504	2.1%
9 ISHARES MARKIT IBOXX # CORPORATE BSLXX	IEEM	IE00B00FV011	1,967	1.7%
10 DB X-TRACKERS EURO STOXX 50 ETF	XESX	LU0274211217	1,940	1.6%

MOST TRADED IN THE YEAR 2010 BY TURNOVER

Name	TIDM	ISIN	GBP Turnover	% Total
1 ISHARES FTSE 100	ISF	IE0005042456	8,699,115,225	10.3%
2 ETFS PHYSICAL GOLD	PHAU	JE00B1VS3770	5,227,278,754	6.2%
3 GOLD BULLION SECURITIES	GBS	GB00B00FHZ82	3,809,945,463	4.5%
4 MSCI EMERGING MARKETS SOURCE E'MXFS	ISF	IE00B3DWVS88	2,181,176,424	2.6%
5 ISHARES S&P 500	IUSA	IE0031442068	1,895,960,552	2.2%
6 ISHARES EURO STOXX 50	EUE	IE0008471009	1,527,114,192	1.8%
7 ISHARES MSCI EMERGING MARKET	IEEM	IE00B0M63177	1,372,202,999	1.6%
8 ETFS AGRICULTURE DJ-UBSCI	AIGA	GB00B15KYH63	1,358,154,235	1.6%
9 ISHARES MARKIT IBOXX # CORPORATESLXX	IEEM	IE00B00FV011	1,357,472,756	1.6%
10 ISHARES MSCI WORLD	IWRD	IE00B0M62Q58	1,353,464,159	1.6%

MOST TRADED IN THE YEAR 2010 BY TRADES

Name	TIDM	ISIN	Trades	% Total
1 ISHARES FTSE 100	ISF	IE0005042456	167,823	15.9%
2 ETFS PHYSICAL GOLD	PHAU	JE00B1VS3770	33,195	3.1%
3 ISHARES S&P 500	IUSA	IE0031442068	29,743	2.8%
4 ISHARES MARKIT IBOXX # CORPORATE BSLXX	IEEM	IE00B00FV011	24,201	2.3%
5 GOLD BULLION SECURITIES	GBS	GB00B00FHZ82	23,865	2.3%
6 ISHARES FTSE 250	MIDD	IE00B00FV128	22,335	2.1%
7 ETFS NATURAL GAS	NGAS	GB00B15KY104	21,804	2.1%
8 ISHARES BARCAP # INDEX-LINKED GILTS INXG	IEEM	IE00B1FZSD53	20,386	1.9%
9 ETFS LEVERAGED NATURAL GAS	LNGA	JE00B2NFTQ41	19,791	1.9%
10 DB X-TRACKERS FTSE 100 ETF	XUKX	LU0292097234	19,364	1.8%

<http://www.londonstockexchange.com/statistics/specialist-issues/etfs-etps/etfs-etps.htm>

Copyright © October 2010 London Stock Exchange plc. Registered in England and Wales No. 2075721. London Stock Exchange plc has used all reasonable efforts to ensure that the information contained in this publication is correct at the time of going to press, but shall not be liable for decisions made in reliance on it. London Stock Exchange and the coat of arms device are registered trademarks of London Stock Exchange plc.