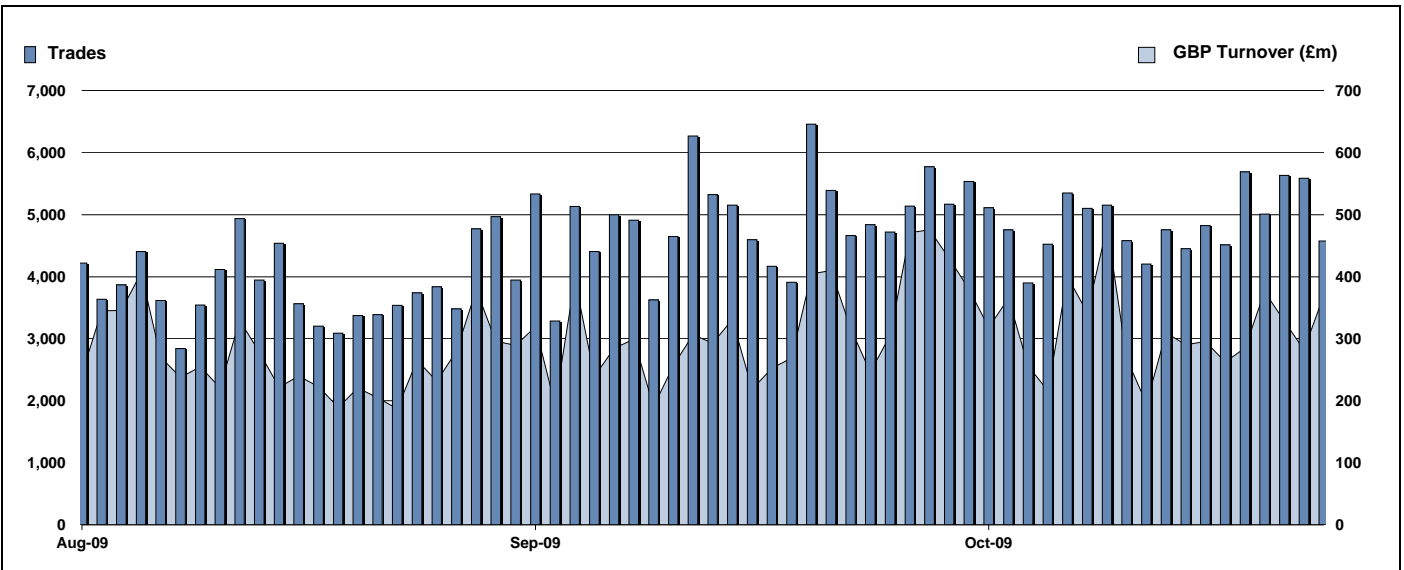


Exchange Traded Funds and Exchange Traded Products

Monthly statistics - October 2009



DAILY TRADING



MAIN INDICATORS

	LISTED INSTRUMENTS		TRADING					
	LISTED END OF MONTH	MONTH NEW LISTED	September-09		October-09		2009 YTD	
			Trades	GBP Turnover	Trades	GBP Turnover	Trades	GBP Turnover
ETF - DEVELOPED MARKET	86	1	40,074	2,401,658,500	39,902	2,827,121,902	345,999	24,652,687,356
ETF - BONDS	31	-	8,335	957,976,456	10,198	934,856,620	82,666	7,712,922,310
ETF - EMERGING MARKETS	37	-	8,866	704,256,957	12,119	989,190,098	71,596	5,846,167,846
ETF - STYLE	5	-	284	26,634,860	261	42,426,575	1,646	231,943,804
OTHERS	58	-	3,981	326,301,826	4,592	294,239,717	24,995	1,934,294,049
ETC	124	-	43,956	2,076,007,723	42,231	2,303,620,462	303,211	19,049,099,904
ETN	1	-	21	5,091,862	33	7,186,501	242	42,969,744
TOTAL	342	1	105,517	6,497,928,185	109,336	7,398,641,875	830,355	59,470,085,013

MOST TRADED IN THE MONTH BY TURNOVER

Name	TIDM	ISIN	GBP Turnover	% Total
1 ISHARES FTSE 100	ISF	IE0005042456	942,787,438	12.7%
2 ETFs PHYSICAL GOLD	PHAU	JE00B1VS3770	305,259,086	4.1%
3 GOLD BULLION SECURITIES	GBS	GB00B00FHZ82	288,873,026	3.9%
4 ETFs NATURAL GAS	NGAS	GB00B15KY104	281,950,621	3.8%
5 ISHARES MSCI EMERGING MARKET	IEEM	IE00B0M63177	175,035,702	2.4%
6 ISHARES GBP CORPORATE BOND	SLXX	IE00B00FV011	173,615,737	2.3%
7 ISHARES S&P 500	IUSA	IE0031442068	163,644,604	2.2%
8 ISHARES MSCI AC FAR EAST EX JAPANIFF	IE00B0M63730	161,515,357	2.2%	
9 ETFs CRUDE OIL	CRUD	GB00B15KXV33	154,612,892	2.1%
10 ETFs LEVERAGED CRUDE OIL	LOIL	JE00B2NFTJ73	153,856,974	2.1%

MOST TRADED IN THE MONTH BY TRADES

Name	TIDM	ISIN	Trades	% Total
1 ISHARES FTSE 100	ISF	IE0005042456	16,084	14.7%
2 ETFs LEVERAGED NATURAL GAS	LNGA	JE00B2NFTQ41	5,766	5.3%
3 ETFs NATURAL GAS	NGAS	GB00B15KY104	5,668	5.2%
4 ETFs PHYSICAL GOLD	PHAU	JE00B1VS3770	4,525	4.1%
5 ETFs LEVERAGED CRUDE OIL	LOIL	JE00B2NFTJ73	3,175	2.9%
6 ISHARES GBP CORPORATE BOND	SLXX	IE00B00FV011	2,974	2.7%
7 ISHARES S&P 500	IUSA	IE0031442068	2,329	2.1%
8 GOLD BULLION SECURITIES	GBS	GB00B00FHZ82	2,269	2.1%
9 ISHARES FTSE 250	MIDD	IE00B00FV128	2,214	2.0%
10 ISHARES # IDX LKD GILT	INXG	IE00B1FZSD53	2,026	1.9%

MOST TRADED IN THE YEAR 2009 BY TURNOVER

Name	TIDM	ISIN	GBP Turnover	% Total
1 ISHARES FTSE 100	ISF	IE0005042456	9,974,135,327	16.8%
2 GOLD BULLION SECURITIES	GBS	GB00B00FHZ82	4,684,866,082	7.9%
3 ETFs PHYSICAL GOLD	PHAU	JE00B1VS3770	3,071,554,991	5.2%
4 ISHARES GBP CORPORATE BOND	SLXX	IE00B00FV011	1,853,355,870	3.1%
5 ISHARES S&P 500	IUSA	IE0031442068	1,786,594,168	3.0%
6 ETFs LEVERAGED CRUDE OIL	LOIL	JE00B2NFTJ73	1,306,986,668	2.2%
7 S&P 500	IDUS	IE0031442068	1,300,892,325	2.2%
8 ISHARES DJ EURO STOXX 50	EUE	IE0008471009	1,228,012,633	2.1%
9 ETFs NATURAL GAS	NGAS	GB00B15KY104	1,187,632,271	2.0%
10 ETFs CRUDE OIL	CRUD	GB00B15KXV33	1,108,524,162	1.9%

MOST TRADED IN THE YEAR 2009 BY TRADES

Name	TIDM	ISIN	Trades	% Total
1 ISHARES FTSE 100	ISF	IE0005042456	172,935	20.8%
2 ETFs LEVERAGED CRUDE OIL	LOIL	JE00B2NFTJ73	34,699	4.2%
3 GOLD BULLION SECURITIES	GBS	GB00B00FHZ82	34,692	4.2%
4 ISHARES S&P 500	IUSA	IE0031442068	33,992	4.1%
5 ISHARES GBP CORPORATE BOND	SLXX	IE00B00FV011	33,648	4.1%
6 ETFs NATURAL GAS	NGAS	GB00B15KY104	32,424	3.9%
7 ETFs PHYSICAL GOLD	PHAU	JE00B1VS3770	27,129	3.3%
8 ETFs LEVERAGED NATURAL GAS	LNGA	JE00B2NFTQ41	21,017	2.5%
9 ETFs CRUDE OIL	CRUD	GB00B15KXV33	20,155	2.4%
10 ETFs BRENT OIL	OILB	GB00B0BCTWC01	16,662	2.0%

<http://www.londonstockexchange.com/statistics/specialist-issues/etfs-etps/etfs-etps.htm>

Copyright © October 2009 London Stock Exchange plc. Registered in England and Wales No. 2075721. London Stock Exchange plc has used all reasonable efforts to ensure that the information contained in this publication is correct at the time of going to press, but shall not be liable for decisions made in reliance on it. London Stock Exchange and the coat of arms device are registered trademarks of London Stock Exchange plc.