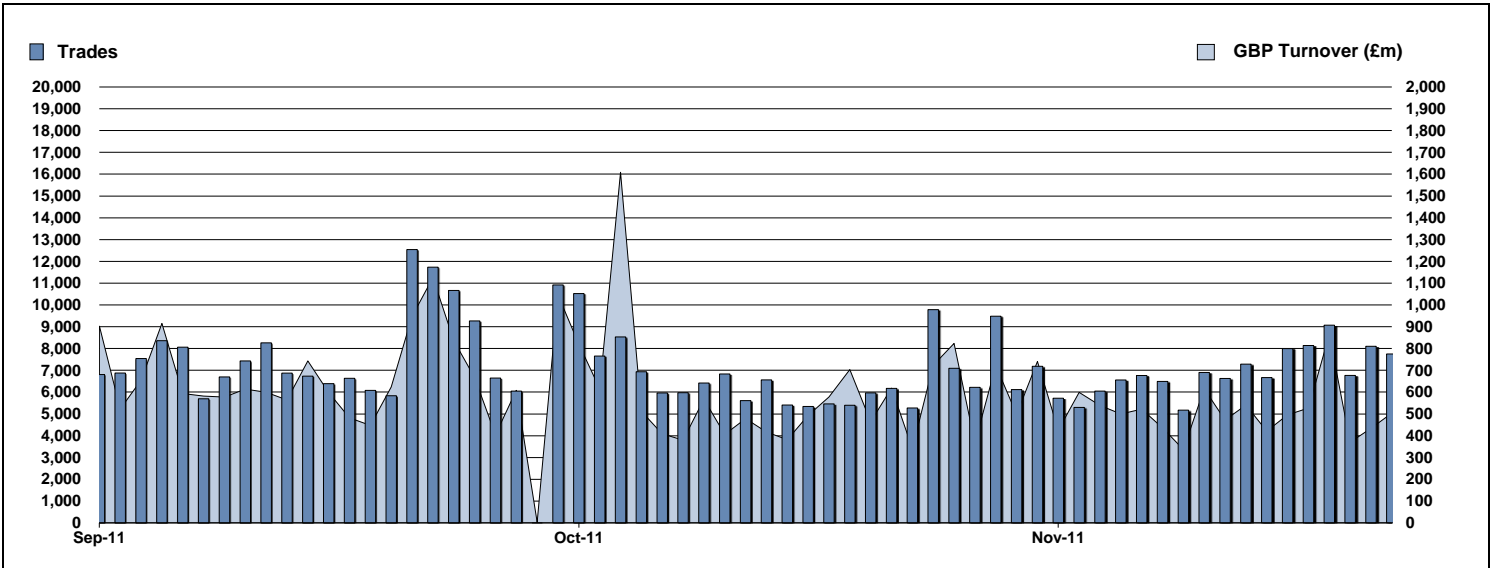


Exchange Traded Funds and Exchange Traded Products

Monthly statistics - November 2011



DAILY TRADING



MAIN INDICATORS

	LISTED INSTRUMENTS		TRADING					
	LISTED END of MONTH	MONTH NEW LISTED	October-11		November-11		2011 YTD	
			Trades	GBP Turnover	Trades	GBP Turnover	Trades	GBP Turnover
ETF - DEVELOPED MARKET	256	-	60,619	4,116,442,012	68,517	4,752,199,940	697,244	53,619,918,646
ETF - EMERGING MARKETS	108	1	20,795	1,655,884,313	23,388	1,579,338,705	219,735	18,081,208,255
ETF - FIXED INCOME	65	-	15,474	2,184,069,542	17,275	2,266,082,579	162,794	18,332,858,207
ETF - SHORT & LEVERAGED	48	-	8,312	381,856,456	11,617	423,131,460	56,732	3,424,624,198
ETF - Others	36	-	1,671	104,092,969	1,812	141,248,636	27,176	1,585,534,128
ETC	302	-	36,777	3,977,705,501	35,699	2,514,184,247	476,578	36,584,749,292
ETN	46	-	195	13,538,369	232	21,349,886	4,261	456,154,137
TOTAL	861	1	143,843	12,433,589,162	158,540	11,697,535,454	1,644,520	132,085,046,863

MOST TRADED IN THE MONTH BY TURNOVER

Name	TIDM	ISIN	GBP Turnover	% Total
1 ISHARES FTSE 100	ISF	IE0005042456	1,056,293,545	8.9%
2 ETFs PHYSICAL GOLD	PHAU	JE00B1VS3770	635,690,938	5.3%
3 (GBS) SEC UND ZERO CPN NTS	GBS	GB00B00FHZ82	427,587,159	3.6%
4 ISHARES S&P 500	IUSA	IE0031442068	351,811,082	3.0%
5 ISHARES FTSE UK GILTS 0-5 £	IGLS	IE00B4WJK79	328,361,726	2.8%
6 S&P 500	IDUS	IE0031442068	282,837,526	2.4%
7 SOURCE PHYSICAL GOLD P-ETC CERT SGLD	IEEM	IE00B579F325	282,534,514	2.4%
8 ISHARES MSCI EMERGING MARKET	IEEM	IE00B0M63177	257,197,138	2.2%
9 ISHARES FTSE UK ALL STKS GILT	IGLT	IE00B1FZSB30	247,573,039	2.1%
10 ISHARES MARKIT IBOX \$ CORPORATI LQDE	IE0032895942		215,102,489	1.8%

MOST TRADED IN THE MONTH BY TRADES

Name	TIDM	ISIN	Trades	% Total
1 ISHARES FTSE 100	ISF	IE0005042456	20,953	13.2%
2 ETFs PHYSICAL GOLD	PHAU	JE00B1VS3770	4,601	2.9%
3 ETFX FTSE 100 SUPER SHORT STRATEGY SUK2	IE00B4QNK008		3,663	2.3%
4 ISHARES S&P 500	IUSA	IE0031442068	3,315	2.1%
5 DB X-TRACKERS FTSE 100 ETF	XUKX	LU0292097234	3,035	1.9%
6 ISHARES MSCI EMERGING MARKET	IEEM	IE00B0M63177	2,965	1.9%
7 ISHARES FTSE 250	MIDD	IE00B00FV128	2,909	1.8%
8 ISHARES BARCAP £ INDEX-LINKED GILTS	INXG	IE00B1FZSD53	2,790	1.8%
9 HSBC FTSE 100 ETF	HUKX	IE00B42TW061	2,558	1.6%
10 ETFs PHYSICAL GOLD £	PHGP	JE00B1VS3770	2,492	1.6%

MOST TRADED IN THE YEAR 2011 BY TURNOVER

Name	TIDM	ISIN	GBP Turnover	% Total
1 ISHARES FTSE 100	ISF	IE0005042456	11,359,774,928	4.7%
2 ETFs PHYSICAL GOLD	PHAU	JE00B1VS3770	7,162,992,437	3.0%
3 S&P 500	IDUS	IE0031442068	3,937,843,243	1.6%
4 (GBS) SEC UND ZERO CPN NTS	GBS	GB00B00FHZ82	3,926,943,295	1.6%
5 ISHARES S&P 500	IUSA	IE0031442068	3,727,090,647	1.5%
6 ISHARES MSCI EMERGING MARKET	IEEM	IE00B0M63177	2,794,987,578	1.2%
7 SOURCE PHYSICAL GOLD P-ETC CERT SGLD	IEEM	IE00B579F325	2,750,045,737	1.1%
8 ISHARES EURO STOXX 50	EUE	IE0008471009	2,156,949,608	0.9%
9 ETFs PHYSICAL GOLD £	PHGP	JE00B1VS3770	2,092,715,231	0.9%
10 ETFs ALL COMMODITIES £ DJ-UBSCI	AIGC	GB00B15KY989	1,984,879,577	0.8%

MOST TRADED IN THE YEAR 2011 BY TRADES

Name	TIDM	ISIN	Trades	% Total
1 ISHARES FTSE 100	ISF	IE0005042456	209,879	12.7%
2 ETFs PHYSICAL GOLD	PHAU	JE00B1VS3770	42,327	2.6%
3 ISHARES S&P 500	IUSA	IE0031442068	39,416	2.4%
4 DB X-TRACKERS FTSE 100 ETF	XUKX	LU0292097234	33,369	2.0%
5 ISHARES MSCI EMERGING MARKET	IEEM	IE00B0M63177	32,323	2.0%
6 ISHARES FTSE 250	MIDD	IE00B00FV128	31,951	1.9%
7 ISHARES FTSE UK DIVIDEND PLUS	IUKD	IE00B0M63060	27,378	1.7%
8 (GBS) SEC UND ZERO CPN NTS	GBS	GB00B00FHZ82	25,265	1.5%
9 ISHARES MSCI JAPAN	IJPN	IE00B02KXH56	24,093	1.5%
10 ETFs LEVERAGED CRUDE OIL	LOIL	JE00B2NFTJ73	23,889	1.5%

<http://www.londonstockexchange.com/statistics/specialist-issues/etfs-etps/etfs-etps.htm>

Copyright © 2011 London Stock Exchange plc. Registered in England and Wales No. 2075721. London Stock Exchange plc has used all reasonable efforts to ensure that the information contained in this publication is correct at the time of going to press, but shall not be liable for decisions made in reliance on it. London Stock Exchange and the coat of arms device are registered trademarks of London Stock Exchange plc.