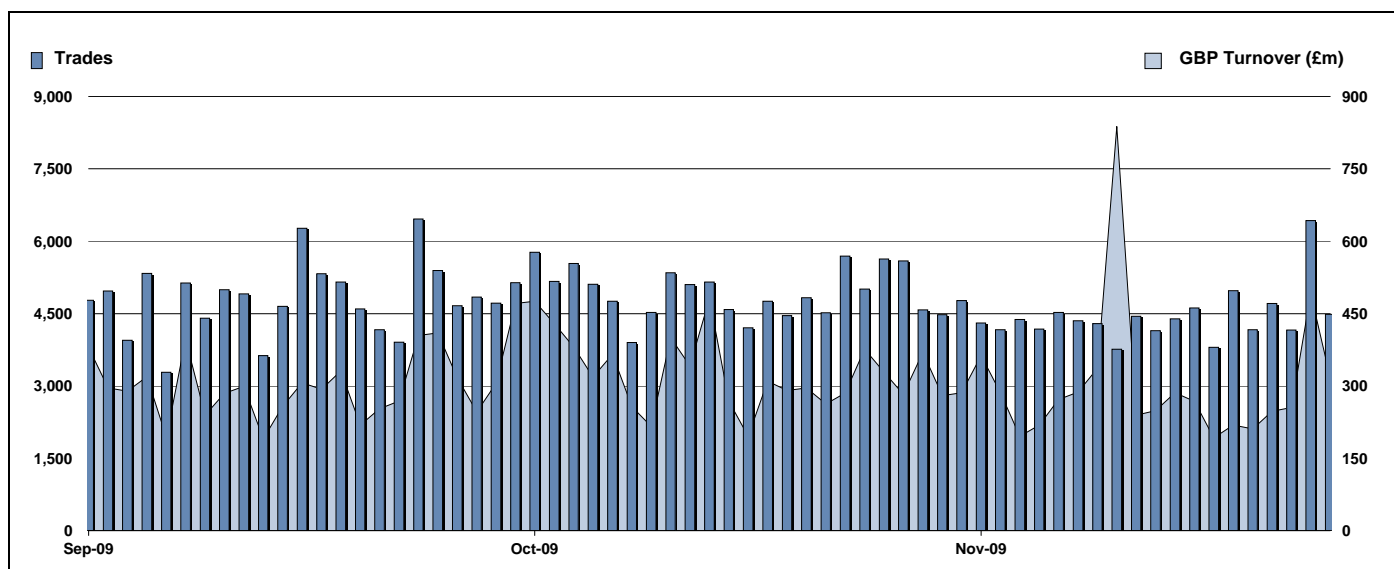


Exchange Traded Funds and Exchange Traded Products

Monthly statistics - November 2009



DAILY TRADING



MAIN INDICATORS

	LISTED INSTRUMENTS		TRADING					
	LISTED END OF MONTH	MONTH NEW LISTED	October-09		November-09		2009 YTD	
			Trades	GBP Turnover	Trades	GBP Turnover	Trades	GBP Turnover
ETF - DEVELOPED MARKET	90	4	39,902	2,827,121,902	33,925	2,277,082,309	379,924	26,929,769,665
ETF - BONDS	31	-	10,198	934,856,620	9,515	1,282,827,898	92,181	8,995,750,208
ETF - EMERGING MARKETS	37	-	12,119	989,190,098	10,218	656,106,868	81,814	6,502,274,714
ETF - STYLE	5	-	261	42,426,575	217	17,780,298	1,863	249,724,102
OTHERS	58	-	4,592	294,239,717	4,387	263,915,696	29,382	2,198,209,746
ETC	147	23	42,231	2,303,620,462	35,199	1,828,730,715	338,410	20,877,830,620
ETN	1	-	33	7,186,501	45	12,442,501	287	55,412,245
TOTAL	369	27	109,336	7,398,641,875	93,506	6,338,886,285	923,861	65,808,971,299

MOST TRADED IN THE MONTH BY TURNOVER

Name	TIDM	ISIN	GBP Turnover	% Total
1 ISHARES FTSE 100	ISF	IE0005042456	671,155,826	10.6%
2 ISHARES # IDX LKD GILT	INXG	IE00B1FZSD53	490,460,284	7.7%
3 GOLD BULLION SECURITIES	GBS	GB00B00FHZ82	437,814,323	6.9%
4 ISHARES \$ TIPS	IDTP	IE00B1FZSC47	283,964,790	4.5%
5 ETFS PHYSICAL GOLD	PHAU	JE00B1VS3770	261,522,449	4.1%
6 ISHARES GBP CORPORATE BOND	SLXX	IE00B00FV011	133,536,750	2.1%
7 ISHARES S&P 500	IUSA	IE0031442068	132,236,602	2.1%
8 ISHARES FTSE 250	MIDD	IE00B00FV128	131,764,628	2.1%
9 ETFS NATURAL GAS	NGAS	GB00B15KY104	123,866,330	2.0%
10 ISHARES MSCI EMERGING MARKET	IEEM	IE00B0M63177	118,836,681	1.9%

MOST TRADED IN THE MONTH BY TRADES

Name	TIDM	ISIN	Trades	% Total
1 ISHARES FTSE 100	ISF	IE0005042456	12,527	13.4%
2 ETFS NATURAL GAS	NGAS	GB00B15KY104	3,992	4.3%
3 ETFS LEVERAGED NATURAL GAS	LNGA	JE00B2NFTQ41	3,966	4.2%
4 ETFS PHYSICAL GOLD	PHAU	JE00B1VS3770	3,885	4.2%
5 ISHARES GBP CORPORATE BOND	SLXX	IE00B00FV011	2,877	3.1%
6 GOLD BULLION SECURITIES	GBS	GB00B00FHZ82	2,777	3.0%
7 ETFS LEVERAGED CRUDE OIL	LOIL	JE00B2NFTJ73	2,199	2.4%
8 ISHARES # IDX LKD GILT	INXG	IE00B1FZSD53	2,108	2.3%
9 ISHARES FTSE 250	MIDD	IE00B00FV128	2,009	2.1%
10 ISHARES S&P 500	IUSA	IE0031442068	1,975	2.1%

MOST TRADED IN THE YEAR 2009 BY TURNOVER

Name	TIDM	ISIN	GBP Turnover	% Total
1 ISHARES FTSE 100	ISF	IE0005042456	10,645,291,152	16.2%
2 GOLD BULLION SECURITIES	GBS	GB00B00FHZ82	5,122,680,406	7.8%
3 ETFS PHYSICAL GOLD	PHAU	JE00B1VS3770	3,333,077,441	5.1%
4 ISHARES GBP CORPORATE BOND	SLXX	IE00B00FV011	1,986,892,620	3.0%
5 ISHARES S&P 500	IUSA	IE0031442068	1,918,830,769	2.9%
6 ISHARES # IDX LKD GILT	INXG	IE00B1FZSD53	1,526,465,777	2.3%
7 ETFS LEVERAGED CRUDE OIL	LOIL	JE00B2NFTJ73	1,403,140,206	2.1%
8 S&P 500	IDUS	IE0031442068	1,362,382,409	2.1%
9 ETFS NATURAL GAS	NGAS	GB00B15KY104	1,311,498,601	2.0%
10 ISHARES DJ EURO STOXX 50	EUE	IE0008471009	1,310,667,567	2.0%

MOST TRADED IN THE YEAR 2009 BY TRADES

Name	TIDM	ISIN	Trades	% Total
1 ISHARES FTSE 100	ISF	IE0005042456	185,462	20.1%
2 GOLD BULLION SECURITIES	GBS	GB00B00FHZ82	37,469	4.1%
3 ETFS LEVERAGED CRUDE OIL	LOIL	JE00B2NFTJ73	36,898	4.0%
4 ISHARES GBP CORPORATE BOND	SLXX	IE00B00FV011	36,525	4.0%
5 ETFS NATURAL GAS	NGAS	GB00B15KY104	36,416	3.9%
6 ISHARES S&P 500	IUSA	IE0031442068	35,967	3.9%
7 ETFS PHYSICAL GOLD	PHAU	JE00B1VS3770	31,014	3.4%
8 ETFS LEVERAGED NATURAL GAS	LNGA	JE00B2NFTQ41	24,983	2.7%
9 ETFS CRUDE OIL	CRUD	GB00B15KV333	21,282	2.3%
10 ETFS BRENT OIL	OILB	GB00B0CTWC01	17,403	1.9%

<http://www.londonstockexchange.com/statistics/specialist-issues/etfs-etps/etfs-etps.htm>

Copyright © November 2009 London Stock Exchange plc. Registered in England and Wales No. 2075721. London Stock Exchange plc has used all reasonable efforts to ensure that the information contained in this publication is correct at the time of going to press, but shall not be liable for decisions made in reliance on it. London Stock Exchange and the coat of arms device are registered trademarks of London Stock Exchange plc.