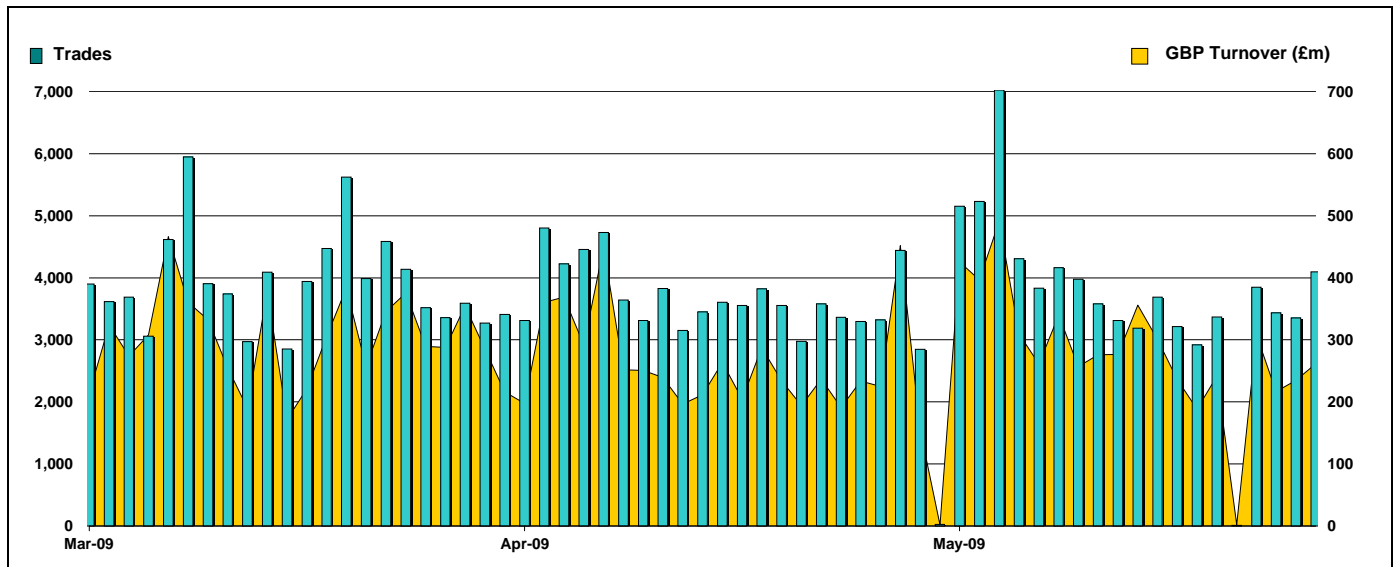


## Exchange Traded Funds and Exchange Traded Products

Monthly statistics - May 2009

### DAILY TRADING



### MAIN INDICATORS

	LISTED INSTRUMENTS		TRADING					
	LISTED END OF MONTH	MONTH NEW LISTED	April-09		May-09		2009 YTD	
			Trades	GBP Turnover	Trades	GBP Turnover	Trades	GBP Turnover
ETF - DEVELOPED MARKET	75	1	33,506	2,513,715,646	29,969	2,317,722,700	173,028	12,838,192,260
ETF - BONDS	21	-	7,762	589,276,393	8,360	632,948,045	40,635	3,919,902,712
ETF - EMERGING MARKETS	41	-	7,877	601,636,198	7,047	691,274,669	30,533	2,401,789,083
ETF - STYLE	5	-	91	7,990,438	155	23,070,981	563	79,794,926
OTHERS	53	-	2,443	217,954,572	2,377	164,911,734	9,082	692,647,125
ETC	123	-	22,688	1,400,613,365	26,622	1,696,783,136	129,645	9,207,382,021
ETN	1	-	61	9,199,029	46	7,281,407	114	19,419,125
<b>TOTAL</b>	<b>319</b>	<b>1</b>	<b>74,428</b>	<b>5,340,385,641</b>	<b>74,576</b>	<b>5,533,992,671</b>	<b>383,600</b>	<b>29,159,127,252</b>

### MOST TRADED IN THE MONTH BY TURNOVER

Name	TIDM	ISIN	GBP Turnover	% Total
1 ISHARES FTSE 100	ISF	IE0005042456	978,822,970	17.7%
2 GOLD BULLION SECURITIES	GBS	GB00B00FHZ82	425,399,220	7.7%
3 ETFs PHYSICAL GOLD	PHAU	JE00B1VS3770	247,846,402	4.5%
4 ISHARES GBP CORPORATE BOND	SLXX	IE00B00FV011	175,775,655	3.2%
5 ISHARES DJ EURO STOXX 50	EUE	IE0008471009	166,947,906	3.0%
6 ISHARES S&P 500	IUSA	IE0031442068	149,187,185	2.7%
7 S&P 500	IDUS	IE0031442068	139,359,481	2.5%
8 ETFs LEVERAGED CRUDE OIL	LOIL	JE00B2NFTJ73	104,013,214	1.9%
9 ETFs CRUDE OIL	CRUD	GB00B15KXV33	100,190,901	1.8%
10 ISHARES # IDX LKD GILT	INXG	IE00B1FZSD53	91,480,181	1.7%

### MOST TRADED IN THE MONTH BY TRADES

Name	TIDM	ISIN	Trades	% Total
1 ISHARES FTSE 100	ISF	IE0005042456	13,830	18.5%
2 ISHARES GBP CORPORATE BOND	SLXX	IE00B00FV011	3,420	4.6%
3 ISHARES S&P 500	IUSA	IE0031442068	3,390	4.5%
4 ETFs LEVERAGED CRUDE OIL	LOIL	JE00B2NFTJ73	3,214	4.3%
5 GOLD BULLION SECURITIES	GBS	GB00B00FHZ82	2,929	3.9%
6 ETFs INDUSTRIAL METALS DJ-AIGCI	AIGI	GB00B15KYG56	2,185	2.9%
7 ETFs BRENT OIL	OILB	GB00B0CTWC01	1,939	2.6%
8 ISHARES # IDX LKD GILT	INXG	IE00B1FZSD53	1,759	2.4%
9 ETFs CRUDE OIL	CRUD	GB00B15KXV33	1,754	2.4%
10 ETFs PHYSICAL GOLD	PHAU	JE00B1VS3770	1,711	2.3%

### MOST TRADED IN THE YEAR 2009 BY TURNOVER

Name	TIDM	ISIN	GBP Turnover	% Total
1 ISHARES FTSE 100	ISF	IE0005042456	5,731,627,993	19.7%
2 GOLD BULLION SECURITIES	GBS	GB00B00FHZ82	3,090,565,868	10.6%
3 ETFs PHYSICAL GOLD	PHAU	JE00B1VS3770	1,839,216,382	6.3%
4 ISHARES S&P 500	IUSA	IE0031442068	954,350,915	3.3%
5 ISHARES GBP CORPORATE BOND	SLXX	IE00B00FV011	947,687,320	3.3%
6 S&P 500	IDUS	IE0031442068	785,862,081	2.7%
7 ISHARES DJ EURO STOXX 50	EUE	IE0008471009	752,679,498	2.6%
8 ISHARES # IDX LKD GILT	INXG	IE00B1FZSD53	657,786,369	2.3%
9 ETFs CRUDE OIL	CRUD	GB00B15KXV33	635,638,149	2.2%
10 ETFs LEVERAGED CRUDE OIL	LOIL	JE00B2NFTJ73	613,497,662	2.1%

### MOST TRADED IN THE YEAR 2009 BY TRADES

Name	TIDM	ISIN	Trades	% Total
1 ISHARES FTSE 100	ISF	IE0005042456	91,616	23.9%
2 GOLD BULLION SECURITIES	GBS	GB00B00FHZ82	22,979	6.0%
3 ETFs LEVERAGED CRUDE OIL	LOIL	JE00B2NFTJ73	21,303	5.6%
4 ISHARES S&P 500	IUSA	IE0031442068	21,211	5.5%
5 ISHARES GBP CORPORATE BOND	SLXX	IE00B00FV011	18,511	4.8%
6 ETFs PHYSICAL GOLD	PHAU	JE00B1VS3770	12,468	3.3%
7 ETFs CRUDE OIL	CRUD	GB00B15KXV33	12,023	3.1%
8 ETFs BRENT OIL	OILB	GB00B0CTWC01	10,065	2.6%
9 ISHARES FTSE UK ALL STKS GILT	IGLT	IE00B1FZSB30	6,993	1.8%
10 ISHARES FTSE 250	MIDD	IE00B00FV128	6,363	1.7%

[www.londonstockexchange.com/etfstats](http://www.londonstockexchange.com/etfstats)

Copyright © May 2009 London Stock Exchange plc. Registered in England and Wales No. 2075721. London Stock Exchange plc has used all reasonable efforts to ensure that the information contained in this publication is correct at the time of going to press, but shall not be liable for decisions made in reliance on it. London Stock Exchange and the coat of arms device are registered trademarks of London Stock Exchange plc.