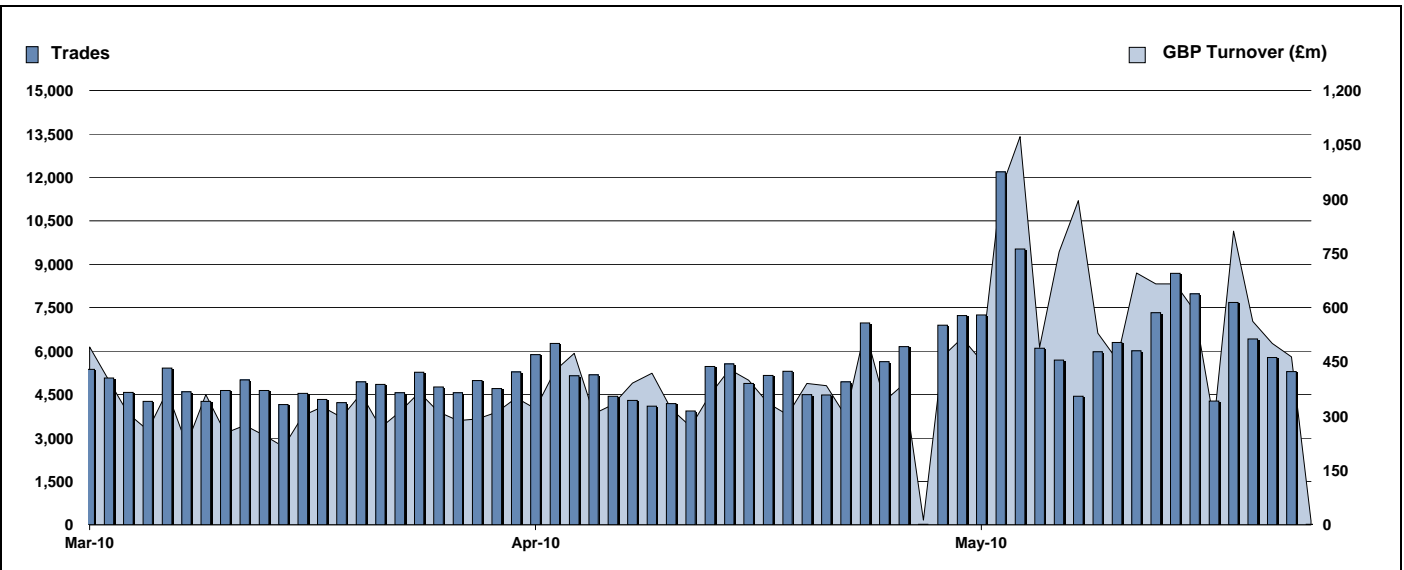


# Exchange Traded Funds and Exchange Traded Products

Monthly statistics - May 2010



## DAILY TRADING



## MAIN INDICATORS

|                        | LISTED INSTRUMENTS     |                     | TRADING        |                      |                |                       |                |                       |
|------------------------|------------------------|---------------------|----------------|----------------------|----------------|-----------------------|----------------|-----------------------|
|                        | LISTED<br>END OF MONTH | MONTH<br>NEW LISTED | April-10       |                      | May-10         |                       | 2010 YTD       |                       |
|                        |                        |                     | Trades         | GBP Turnover         | Trades         | GBP Turnover          | Trades         | GBP Turnover          |
| ETF - DEVELOPED MARKET | 115                    | 14                  | 43,440         | 3,105,916,971        | 63,254         | 5,626,483,451         | 230,427        | 20,253,785,514        |
| ETF - BONDS            | 31                     | -                   | 11,055         | 681,783,604          | 9,564          | 1,323,835,593         | 52,531         | 4,878,771,653         |
| ETF - EMERGING MARKETS | 39                     | 1                   | 12,640         | 1,005,242,610        | 12,780         | 1,193,250,087         | 57,142         | 4,345,566,414         |
| ETF - STYLE            | 6                      | 1                   | 296            | 56,696,981           | 317            | 48,007,964            | 1,324          | 217,723,936           |
| OTHERS                 | 71                     | 2                   | 5,839          | 289,096,955          | 5,768          | 380,675,984           | 26,121         | 1,523,410,785         |
| ETC                    | 171                    | -                   | 29,084         | 2,296,101,170        | 39,037         | 3,231,196,697         | 171,602        | 11,902,038,042        |
| ETN                    | 29                     | -                   | 205            | 4,301,299            | 411            | 22,665,786            | 709            | 49,061,352            |
| <b>TOTAL</b>           | <b>462</b>             | <b>18</b>           | <b>102,559</b> | <b>7,438,139,589</b> | <b>131,131</b> | <b>11,826,115,562</b> | <b>539,856</b> | <b>43,170,357,697</b> |

### MOST TRADED IN THE MONTH BY TURNOVER

| Name                            | TIDM  | ISIN         | GBP Turnover  | % Total |
|---------------------------------|-------|--------------|---------------|---------|
| 1 ISHARES FTSE 100              | ISF   | IE0005042456 | 1,278,537,594 | 10.8%   |
| 2 GOLD BULLION SECURITIES       | GBS   | GB00B00FHZ82 | 704,319,978   | 6.0%    |
| 3 ETFs PHYSICAL GOLD            | PHAU  | JE00B1VS3770 | 612,896,658   | 5.2%    |
| 4 ISHARES EURO STOXX 50         | EUE   | IE0008471009 | 540,991,719   | 4.6%    |
| 5 ISHARES DIVDAX (OTC)          | OO07  | DE0002635273 | 460,400,700   | 3.9%    |
| 6 ISHARES S&P 500               | IUSA  | IE0031442068 | 333,746,085   | 2.8%    |
| 7 ISHARES JPMORGAN USD EMERGING | IIEMB | IE00B2NPKV68 | 239,872,831   | 2.0%    |
| 8 ISHARES DAX (OTC)             | OO06  | DE0005933931 | 222,425,319   | 1.9%    |
| 9 S&P 500                       | IDUS  | IE0031442068 | 207,601,502   | 1.8%    |
| 10 ISHARES FTSE 250             | MIDD  | IE00B00FV128 | 203,569,820   | 1.7%    |

### MOST TRADED IN THE MONTH BY TRADES

| Name                            | TIDM | ISIN         | Trades | % Total |
|---------------------------------|------|--------------|--------|---------|
| 1 ISHARES FTSE 100              | ISF  | IE0005042456 | 22,814 | 17.4%   |
| 2 ISHARES S&P 500               | IUSA | IE0031442068 | 4,566  | 3.5%    |
| 3 ETFs PHYSICAL GOLD            | PHAU | JE00B1VS3770 | 4,485  | 3.4%    |
| 4 GOLD BULLION SECURITIES       | GBS  | GB00B00FHZ82 | 3,737  | 2.8%    |
| 5 ISHARES FTSE 250              | MIDD | IE00B00FV128 | 3,472  | 2.6%    |
| 6 ISHARES MSCI WORLD            | IWRD | IE00B0M62Q58 | 3,312  | 2.5%    |
| 7 DB X-TRACKERS FTSE 100 ETF    | XURX | LU0292097234 | 3,192  | 2.4%    |
| 8 ETFs LEVERAGED CRUDE OIL      | LOIL | JE00B2NFTJ73 | 3,092  | 2.4%    |
| 9 ISHARES MSCI JAPAN            | IJPN | IE00B02KXH56 | 2,637  | 2.0%    |
| 10 ISHARES MSCI EMERGING MARKET | IEEM | IE00B0M63177 | 2,311  | 1.8%    |

### MOST TRADED IN THE YEAR 2010 BY TURNOVER

| Name                                    | TIDM         | ISIN          | GBP Turnover  | % Total |
|---|--------------|---------------|---------------|---------|
| 1 ISHARES FTSE 100                      | ISF          | IE0005042456  | 4,745,253,484 | 11.0%   |
| 2 ETFs PHYSICAL GOLD                    | PHAU         | JE00B1VS3770  | 2,466,760,233 | 5.7%    |
| 3 GOLD BULLION SECURITIES               | GBS          | GB00B00FHZ82  | 1,849,921,773 | 4.3%    |
| 4 DB X-TRACKERS \$ MONEY MKT ETF CAXUSD | LU0356591882 | 1,277,614,827 | 3.0%          |         |
| 5 ISHARES EURO STOXX 50                 | EUE          | IE0008471009  | 1,101,923,061 | 2.6%    |
| 6 DB X-TRACKERS # MONEY MKT ETF CAXGBP  | LU0356592187 | 1,013,592,115 | 2.3%          |         |
| 7 ISHARES S&P 500                       | IUSA         | IE0031442068  | 1,002,702,985 | 2.3%    |
| 8 ISHARES MSCI WORLD                    | IWRD         | IE00B0M62Q58  | 731,969,441   | 1.7%    |
| 9 LYXOR ETF FTSE 100                    | L100         | FR0010438127  | 731,408,191   | 1.7%    |
| 10 ISHARES MSCI EMERGING MARKET         | IEEM         | IE00B0M63177  | 689,417,326   | 1.6%    |

### MOST TRADED IN THE YEAR 2010 BY TRADES

| Name                                       | TIDM         | ISIN         | Trades | % Total |
|--|--------------|--------------|--------|---------|
| 1 ISHARES FTSE 100                         | ISF          | IE0005042456 | 87,881 | 16.3%   |
| 2 ETFs PHYSICAL GOLD                       | PHAU         | JE00B1VS3770 | 17,924 | 3.3%    |
| 3 ETFs NATURAL GAS                         | NGAS         | GB00B15KY104 | 16,486 | 3.1%    |
| 4 ISHARES S&P 500                          | IUSA         | IE0031442068 | 15,800 | 2.9%    |
| 5 ISHARES MARKET IBOX # CORPORATE BSLXX    | IE00B00FV011 | 13,831       | 2.6%   |         |
| 6 GOLD BULLION SECURITIES                  | GBS          | GB00B00FHZ82 | 11,853 | 2.2%    |
| 7 ETFs LEVERAGED NATURAL GAS               | LNGA         | JE00B2NFTQ41 | 11,265 | 2.1%    |
| 8 ISHARES BARCAP # INDEX-LINKED GILTS INXG | IE00B1FZSD53 | 10,758       | 2.0%   |         |
| 9 ISHARES FTSE 250                         | MIDD         | IE00B00FV128 | 10,537 | 2.0%    |
| 10 ETFs LEVERAGED CRUDE OIL                | LOIL         | JE00B2NFTJ73 | 10,186 | 1.9%    |

<http://www.londonstockexchange.com/statistics/specialist-issues/etfs-etps/etfs-etps.htm>

Copyright © April 2010 London Stock Exchange plc. Registered in England and Wales No. 2075721. London Stock Exchange plc has used all reasonable efforts to ensure that the information contained in this publication is correct at the time of going to press, but shall not be liable for decisions made in reliance on it. London Stock Exchange and the coat of arms device are registered trademarks of London Stock Exchange plc.