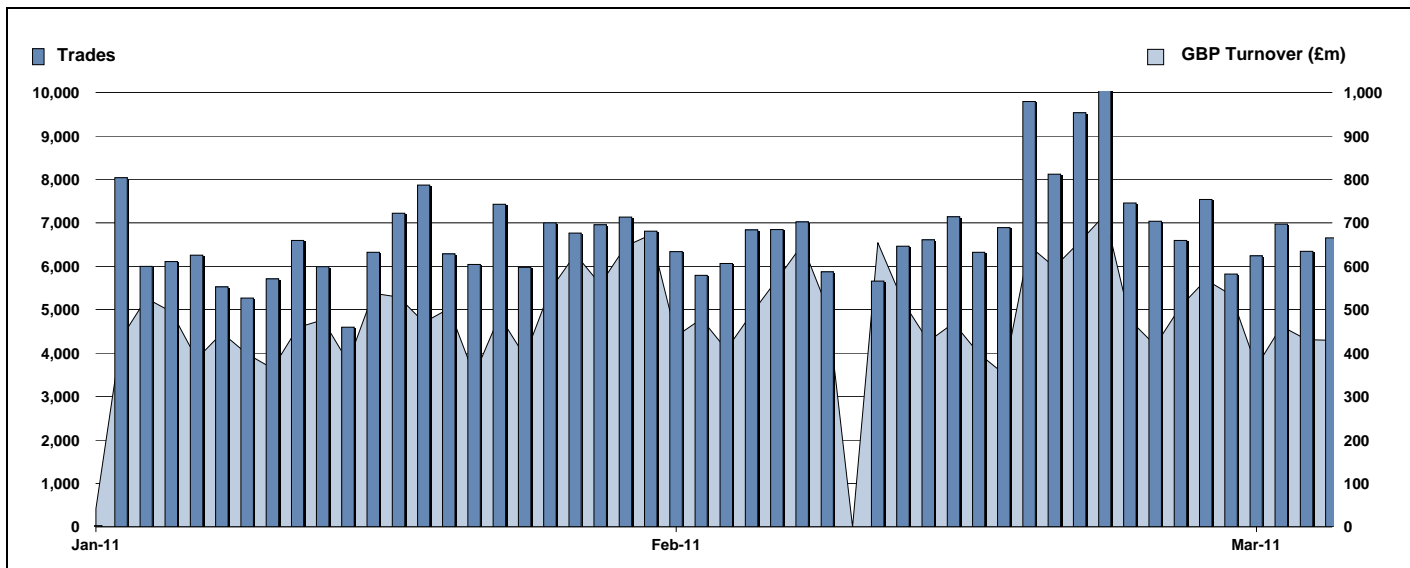


# Exchange Traded Funds and Exchange Traded Products

Monthly statistics - March 2011



## DAILY TRADING



## MAIN INDICATORS

	LISTED INSTRUMENTS		TRADING					
	LISTED END of MONTH	MONTH NEW LISTED	February-11		March-11		2011 YTD	
			Trades	GBP Turnover	Trades	GBP Turnover	Trades	GBP Turnover
ETF - DEVELOPED MARKET	117	-	48,771	4,057,483,545	86,171	5,902,885,438	543,021	41,237,961,910
ETC	227	-	46,607	2,960,500,939	54,094	3,633,906,180	393,653	29,897,853,941
ETF - EMERGING MARKETS	40	-	18,017	1,246,255,251	21,658	1,179,721,459	148,931	15,988,005,642
ETF - BONDS	33	-	9,800	762,537,154	10,945	992,349,285	121,088	12,614,496,990
OTHERS	71	-	8,595	778,269,463	10,098	476,103,637	64,634	3,814,874,153
ETF - STYLE	7	-	415	85,553,779	762	117,054,496	2,994	493,048,276
ETN	30	-	488	27,210,664	500	61,291,023	5,602	395,156,237
<b>TOTAL</b>	<b>525</b>	<b>-</b>	<b>132,693</b>	<b>9,917,810,795</b>	<b>184,228</b>	<b>12,363,311,519</b>	<b>1,279,923</b>	<b>104,441,397,148</b>

### MOST TRADED IN THE MONTH BY TURNOVER

Name	TIDM	ISIN	GBP Turnover	% Total
1 ISHARES FTSE 100	ISF	IE0005042456	1,586,791,291	12.0%
2 ISHARES S&P 500	IUSA	IE0031442068	559,246,254	4.2%
3 ETFs PHYSICAL GOLD	PHAU	JE00B1VS3770	545,346,524	4.1%
4 S&P 500	IDUS	IE0031442068	308,989,157	2.3%
5 ETFs BRENT OIL	OILB	GB00B0CTWC01	307,967,411	2.3%
6 ISHARES MSCI JAPAN	IJPN	IE00B02KXH56	299,556,106	2.3%
7 ISHARES EURO STOXX 50	EUE	IE0008471009	255,999,487	1.9%
8 SOURCE PHYSICAL GOLD P-ETC CERT SGLD	IJPN	IE00B579F325	254,166,927	1.9%
9 ISHARES MARKIT IBOXX EUR HIGH YIE IHYG	IEEM	IE00B66F4759	219,825,117	1.7%
10 ETFs CRUDE OIL	CRUD	GB00B15KXV33	214,838,432	1.6%

### MOST TRADED IN THE MONTH BY TRADES

Name	TIDM	ISIN	Trades	% Total
1 ISHARES FTSE 100	ISF	IE0005042456	30,526	15.9%
2 ISHARES MSCI JAPAN	IJPN	IE00B02KXH56	7,975	4.2%
3 ISHARES S&P 500	IUSA	IE0031442068	5,307	2.8%
4 ETFs NATURAL GAS	NGAS	GB00B15KY104	4,711	2.5%
5 DB X-TRACKERS FTSE 100 ETF	XUKX	LU0292097234	4,099	2.1%
6 ISHARES FTSE 250	MIDD	IE00B00FY128	3,892	2.0%
7 ISHARES FTSE UK DIVIDEND PLUS	IUKD	IE00B0M63060	3,546	1.9%
8 ISHARES MSCI EMERGING MARKET	IEEM	IE00B0M63177	3,479	1.8%
9 ETFs PHYSICAL GOLD	PHAU	JE00B1VS3770	3,463	1.8%
10 ETFs LEVERAGED NATURAL GAS	LNGA	JE00B2NFTQ41	3,043	1.6%

### MOST TRADED IN THE YEAR 2010 BY TURNOVER

Name	TIDM	ISIN	GBP Turnover	% Total
1 DB X-TRACKERS MSCI WHEALTHTRN EXWHD	ISF	LU0540980223	2,860	0.0%
2 ISHARES BARCAP EURO GOVERNMENT BIEGL	IE00B1FZS913	-	230,786,854	-0.2%
3 ISHARES FTSE 100	ISF	IE0005042456	2,949,511,246	2.1%
4 ETFs PHYSICAL GOLD	PHAU	JE00B1VS3770	1,586,011,116	1.1%
5 ISHARES S&P 500	IUSA	IE0031442068	1,132,431,131	0.8%
6 RDX SOURCE ETF	RDXS	IE00B5NDLN01	799,959,058	0.6%
7 S&P 500	IDUS	IE0031442068	777,892,965	0.6%
8 (GBS) SEC UND ZERO CPN NTS	GBS	GB00B00FHZ62	753,391,456	0.5%
9 ISHARES EURO STOXX 50	EUE	IE0008471009	652,336,867	0.5%
10 ISHARES MSCI EMERGING MARKET	IEEM	IE00B0M63177	649,662,237	0.5%

### MOST TRADED IN THE YEAR 2010 BY TRADES

Name	TIDM	ISIN	Trades	% Total
1 ISHARES FTSE 100	ISF	IE0005042456	60,449	3.4%
2 ISHARES MSCI JAPAN	IJPN	IE00B02KXH56	11,569	0.7%
3 ISHARES S&P 500	IUSA	IE0031442068	11,534	0.7%
4 ETFs PHYSICAL GOLD	PHAU	JE00B1VS3770	9,938	0.6%
5 ISHARES MSCI EMERGING MARKET	IEEM	IE00B0M63177	8,780	0.5%
6 ISHARES FTSE 250	MIDD	IE00B00FY128	8,760	0.5%
7 DB X-TRACKERS FTSE 100 ETF	XUKX	LU0292097234	7,990	0.5%
8 ETFs LEVERAGED CRUDE OIL	LOIL	JE00B2NFTJ73	7,984	0.5%
9 ETFs NATURAL GAS	NGAS	GB00B15KY104	7,880	0.5%
10 ISHARES FTSE UK DIVIDEND PLUS	IUKD	IE00B0M63060	7,830	0.4%

<http://www.londonstockexchange.com/statistics/specialist-issues/etfs-etps/etfs-etps.htm>

Copyright © April 2010 London Stock Exchange plc. Registered in England and Wales No. 2075721. London Stock Exchange plc has used all reasonable efforts to ensure that the information contained in this publication is correct at the time of going to press, but shall not be liable for decisions made in reliance on it. London Stock Exchange and the coat of arms device are registered trademarks of London Stock Exchange plc.