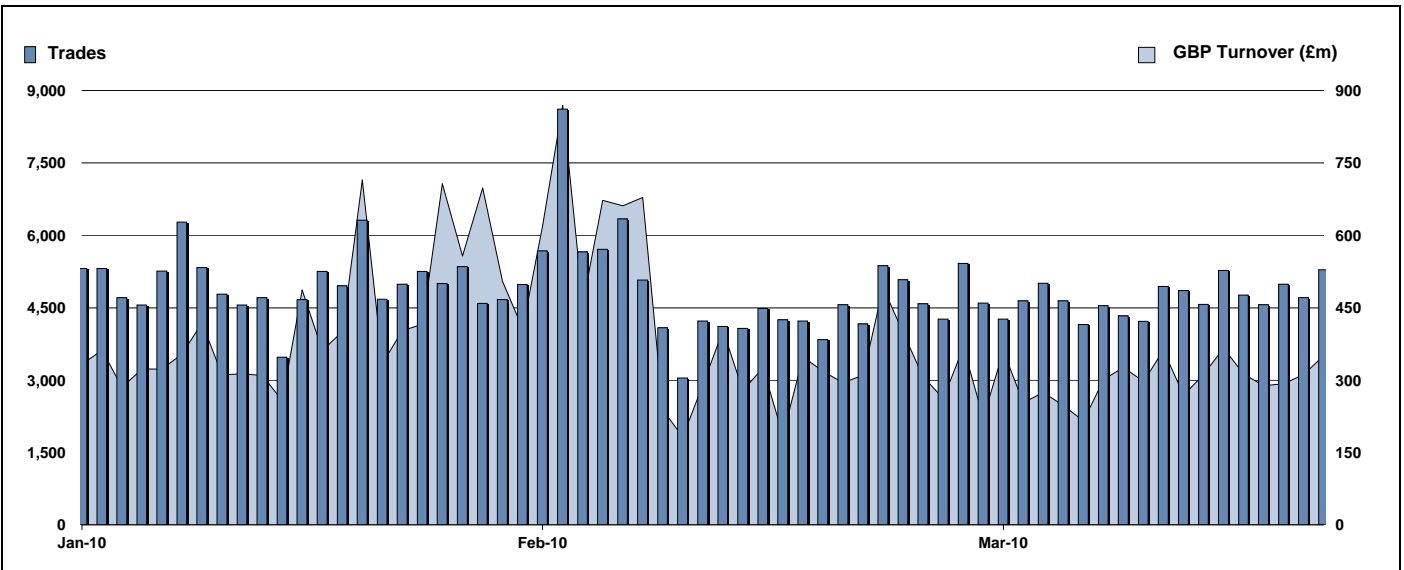


# Exchange Traded Funds and Exchange Traded Products

Monthly statistics - March 2010



## DAILY TRADING



## MAIN INDICATORS

	LISTED INSTRUMENTS		TRADING					
	LISTED END OF MONTH	MONTH NEW LISTED	February-10		March-10		2010 YTD	
			Trades	GBP Turnover	Trades	GBP Turnover	Trades	GBP Turnover
ETF - DEVELOPED MARKET	99	4	42,850	4,739,426,165	43,117	3,089,014,857	123,733	11,521,385,092
ETF - BONDS	31	-	9,644	1,025,330,425	12,107	993,331,249	31,912	2,873,152,457
ETF - EMERGING MARKETS	37	-	8,448	604,634,941	12,126	697,948,845	31,722	2,147,073,718
ETF - STYLE	5	-	223	23,775,759	277	44,494,575	711	113,018,991
OTHERS	69	1	4,055	238,032,367	5,715	324,432,316	14,514	854,637,847
ETC	171	22	31,106	2,102,469,147	35,701	2,037,159,660	103,481	6,374,740,175
ETN	1	-	41	10,756,432	19	4,217,245	93	22,094,267
<b>TOTAL</b>	<b>413</b>	<b>27</b>	<b>96,367</b>	<b>8,744,425,255</b>	<b>109,062</b>	<b>7,190,598,747</b>	<b>306,166</b>	<b>23,906,102,546</b>

### MOST TRADED IN THE MONTH BY TURNOVER

Name	TIDM	ISIN	GBP Turnover	% Total
1 ISHARES FTSE 100	ISF	IE0005042456	904,988,366	12.6%
2 ETFs PHYSICAL GOLD	PHAU	JE00B1VS3770	389,740,218	5.4%
3 GOLD BULLION SECURITIES	GBS	GB00B00FHZ82	323,499,980	4.5%
4 ISHARES MSCI WORLD	IWRD	IE00B0M62Q58	181,679,943	2.5%
5 ISHARES S&P 500	IUSA	IE0031442068	180,955,908	2.5%
6 ISHARES MSCI EMERGING MARKET	IEEM	IE00B0M63177	167,352,476	2.3%
7 ETFs SHORT COPPER	SCOP	JE00B24DK645	160,532,837	2.2%
8 ISHARES GBP CORPORATE BOND	SLXX	IE00B00FV011	155,038,354	2.2%
9 ISHARES EUR CORPORATE BOND	IBCX	IE0032523478	152,296,244	2.1%
10 ISHARES FTSE 250	MIDD	IE00B00FV128	132,729,472	1.8%

### MOST TRADED IN THE MONTH BY TRADES

Name	TIDM	ISIN	Trades	% Total
1 ISHARES FTSE 100	ISF	IE0005042456	17,794	16.3%
2 ETFs NATURAL GAS	NGAS	GB00B15KY104	4,290	3.9%
3 ETFs PHYSICAL GOLD	PHAU	JE00B1VS3770	3,642	3.3%
4 ISHARES S&P 500	IUSA	IE0031442068	3,606	3.3%
5 ISHARES GBP CORPORATE BOND	SLXX	IE00B00FV011	3,367	3.1%
6 ETFs LEVERAGED NATURAL GAS	LNGA	JE00B2NFTQ41	3,118	2.9%
7 ISHARES # IDX LKD GILT	INXG	IE00B1FZSD53	2,547	2.3%
8 GOLD BULLION SECURITIES	GBS	GB00B00FHZ82	2,221	2.0%
9 ISHARES MSCI EMERGING MARKET	IEEM	IE00B0M63177	1,962	1.8%
10 ISHARES FTSE 250	MIDD	IE00B00FV128	1,928	1.8%

### MOST TRADED IN THE YEAR 2010 BY TURNOVER

Name	TIDM	ISIN	GBP Turnover	% Total
1 ISHARES FTSE 100	ISF	IE0005042456	2,684,148,118	11.2%
2 DB X-TRACKERS \$ MONEY MKT ETF CAXUSD	LU0356591882		1,235,809,393	5.2%
3 ETFs PHYSICAL GOLD	PHAU	JE00B1VS3770	1,180,197,991	4.9%
4 DB X-TRACKERS # MONEY MKT ETF CAXGBP	LU0356592187		1,011,426,491	4.2%
5 GOLD BULLION SECURITIES	GBS	GB00B00FHZ82	865,266,687	3.6%
6 LYXOR ETF FTSE 100	L100	FR0010438127	635,618,615	2.7%
7 ISHARES S&P 500	IUSA	IE0031442068	445,699,111	1.9%
8 ETFs AGRICULTURE DJ-AIGCI	AIGA	GB00B15KYH63	431,888,301	1.8%
9 ISHARES GBP CORPORATE BOND	SLXX	IE00B00FV011	422,924,196	1.8%
10 ISHARES MSCI WORLD	IWRD	IE00B0M62Q58	406,823,021	1.7%

### MOST TRADED IN THE YEAR 2010 BY TRADES

Name	TIDM	ISIN	Trades	% Total
1 ISHARES FTSE 100	ISF	IE0005042456	50,120	16.4%
2 ETFs NATURAL GAS	NGAS	GB00B15KY104	13,281	4.3%
3 ETFs PHYSICAL GOLD	PHAU	JE00B1VS3770	9,925	3.2%
4 ISHARES GBP CORPORATE BOND	SLXX	IE00B00FV011	9,186	3.0%
5 ISHARES S&P 500	IUSA	IE0031442068	7,642	2.5%
6 ETFs LEVERAGED NATURAL GAS	LNGA	JE00B2NFTQ41	7,568	2.5%
7 ISHARES # IDX LKD GILT	INXG	IE00B1FZSD53	6,502	2.1%
8 DB X-TRACKERS \$ MONEY MKT ETF CAP	XUSD	LU0356591882	6,251	2.0%
9 GOLD BULLION SECURITIES	GBS	GB00B00FHZ82	6,167	2.0%
10 ETFs LEVERAGED CRUDE OIL	LOIL	JE00B2NFTJ73	5,825	1.9%

<http://www.londonstockexchange.com/statistics/specialist-issues/etfs-etps/etfs-etps.htm>

Copyright © March 2010 London Stock Exchange plc. Registered in England and Wales No. 2075721. London Stock Exchange plc has used all reasonable efforts to ensure that the information contained in this publication is correct at the time of going to press, but shall not be liable for decisions made in reliance on it. London Stock Exchange and the coat of arms device are registered trademarks of London Stock Exchange plc.