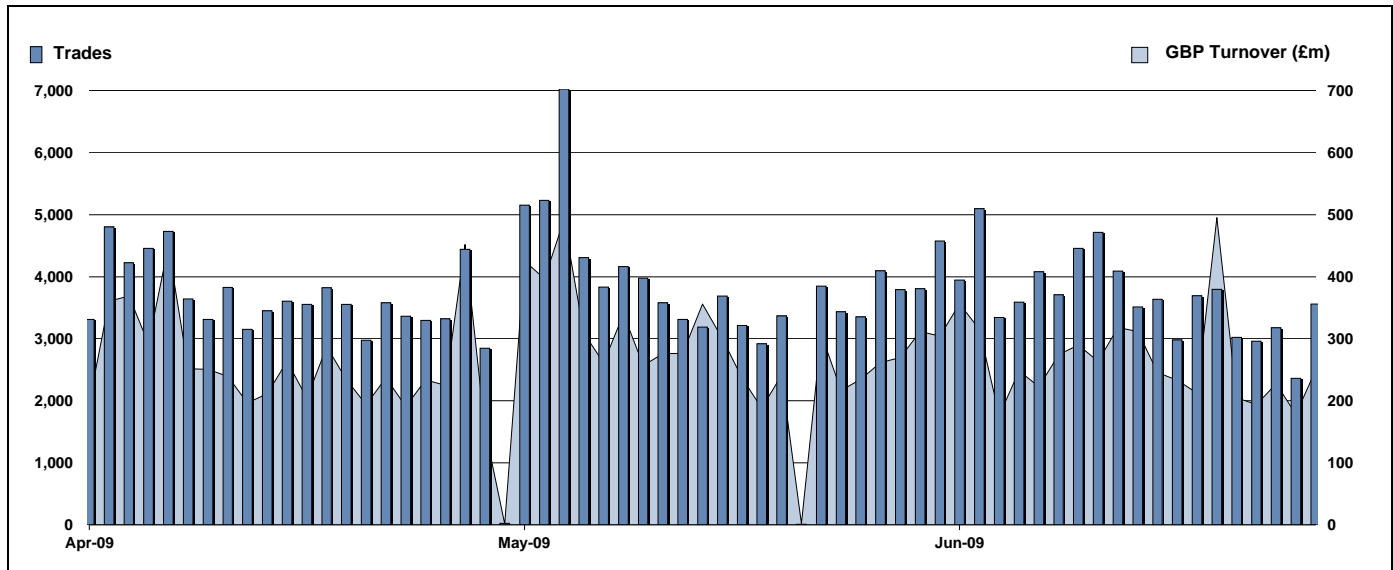


Exchange Traded Funds and Exchange Traded Products

Monthly statistics - June 2009



DAILY TRADING



MAIN INDICATORS

	LISTED INSTRUMENTS		TRADING					
	LISTED END of MONTH	MONTH NEW LISTED	Trades	May-09 GBP Turnover	Trades	June-09 GBP Turnover	Trades	2009 YTD GBP Turnover
ETF - DEVELOPED MARKET	76	6	29,969	2,317,722,700	30,931	2,278,167,033	203,959	15,116,359,293
ETF - BONDS	21	-	8,360	632,948,045	7,953	626,657,161	48,588	4,546,559,872
ETF - EMERGING MARKETS	36	-	7,047	691,274,669	7,393	666,636,055	37,926	3,068,325,138
ETF - STYLE	5	-	155	23,070,981	164	27,599,142	727	107,394,067
OTHERS	51	-	2,377	164,911,734	2,100	174,884,037	11,182	867,531,162
ETC	124	1	26,622	1,696,783,136	33,306	2,122,624,704	162,951	11,330,006,725
ETN	1	-	46	7,281,407	44	6,949,162	158	26,368,287
TOTAL	314	7	74,576	5,533,992,671	81,891	5,903,417,294	465,491	35,062,544,545

MOST TRADED IN THE MONTH BY TURNOVER

Name	TIDM	ISIN	GBP Turnover	% Total
1 ISHARES FTSE 100	ISF	IE0005042456	1,003,537,433	17.0%
2 GOLD BULLION SECURITIES	GBS	GB00B00FHZ82	436,782,972	7.4%
3 ETFS LEVERAGED CRUDE OIL	LOIL	JE00B2NFTJ73	236,343,896	4.0%
4 ETFS NATURAL GAS	NGAS	GB00B15KY104	206,298,745	3.5%
5 ETFS PHYSICAL GOLD	PHAU	JE00B1VS3770	187,252,900	3.2%
6 ISHARES GBP CORPORATE BOND	SLXX	IE00B00FV011	153,408,672	2.6%
7 ISHARES S&P 500	IUSA	IE0031442068	145,674,009	2.5%
8 ISHARES FTSE 250	MIDD	IE00B00FV128	141,038,074	2.4%
9 S&P 500	IDUS	IE0031442068	106,149,961	1.8%
10 ETFS BRENT OIL	OILB	GB00B0CTWC01	103,079,592	1.7%

MOST TRADED IN THE MONTH BY TRADES

Name	TIDM	ISIN	Trades	% Total
1 ISHARES FTSE 100	ISF	IE0005042456	15,427	18.8%
2 ETFS NATURAL GAS	NGAS	GB00B15KY104	5,127	6.3%
3 ETFS LEVERAGED CRUDE OIL	LOIL	JE00B2NFTJ73	3,225	3.9%
4 GOLD BULLION SECURITIES	GBS	GB00B00FHZ82	3,188	3.9%
5 ISHARES S&P 500	IUSA	IE0031442068	3,161	3.9%
6 ISHARES GBP CORPORATE BOND	SLXX	IE00B00FV011	2,980	3.6%
7 ETFS LEVERAGED NATURAL GAS	LNGA	JE00B2NFTQ41	2,912	3.6%
8 ETFS CRUDE OIL	CRUD	GB00B15KXV33	2,111	2.6%
9 ISHARES # IDX LKD GILT	INXG	IE00B1FZSD53	1,868	2.3%
10 ETFS BRENT OIL	OILB	GB00B0CTWC01	1,847	2.3%

MOST TRADED IN THE YEAR 2009 BY TURNOVER

Name	TIDM	ISIN	GBP Turnover	% Total
1 ISHARES FTSE 100	ISF	IE0005042456	6,735,165,426	19.2%
2 GOLD BULLION SECURITIES	GBS	GB00B00FHZ82	3,527,348,840	10.1%
3 ETFS PHYSICAL GOLD	PHAU	JE00B1VS3770	2,026,469,282	5.8%
4 ISHARES GBP CORPORATE BOND	SLXX	IE00B00FV011	1,101,095,992	3.1%
5 ISHARES S&P 500	IUSA	IE0031442068	1,100,024,923	3.1%
6 S&P 500	IDUS	IE0031442068	892,012,042	2.5%
7 ETFS LEVERAGED CRUDE OIL	LOIL	JE00B2NFTJ73	849,841,559	2.4%
8 ISHARES DJ EURO STOXX 50	EUE	IE0008471009	804,246,024	2.3%
9 ISHARES # IDX LKD GILT	INXG	IE00B1FZSD53	738,096,226	2.1%
10 ETFS CRUDE OIL	CRUD	GB00B15KXV33	727,535,912	2.1%

MOST TRADED IN THE YEAR 2009 BY TRADES

Name	TIDM	ISIN	Trades	% Total
1 ISHARES FTSE 100	ISF	IE0005042456	107,043	23.0%
2 GOLD BULLION SECURITIES	GBS	GB00B00FHZ82	26,167	5.6%
3 ETFS LEVERAGED CRUDE OIL	LOIL	JE00B2NFTJ73	24,528	5.3%
4 ISHARES S&P 500	IUSA	IE0031442068	24,372	5.2%
5 ISHARES GBP CORPORATE BOND	SLXX	IE00B00FV011	21,491	4.6%
6 ETFS CRUDE OIL	CRUD	GB00B15KXV33	14,134	3.0%
7 ETFS PHYSICAL GOLD	PHAU	JE00B1VS3770	14,005	3.0%
8 ETFS BRENT OIL	OILB	GB00B0CTWC01	11,912	2.6%
9 ISHARES FTSE UK ALL STKS GILT	IGLT	IE00B1FZSB30	8,094	1.7%
10 ISHARES # IDX LKD GILT	INXG	IE00B1FZSD53	7,998	1.7%

<http://www.londonstockexchange.com/statistics/specialist-issues/etfs-etps/etfs-etps.htm>

Copyright © June 2009 London Stock Exchange plc. Registered in England and Wales No. 2075721. London Stock Exchange plc has used all reasonable efforts to ensure that the information contained in this publication is correct at the time of going to press, but shall not be liable for decisions made in reliance on it. London Stock Exchange and the coat of arms device are registered trademarks of London Stock Exchange plc.