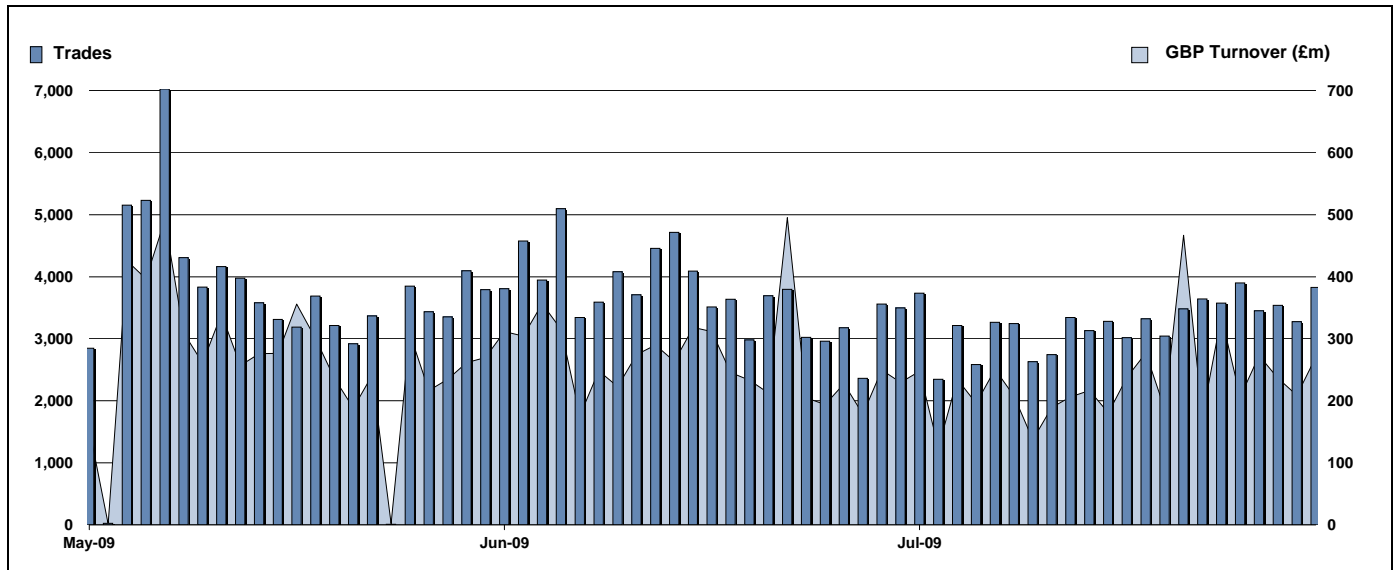


Exchange Traded Funds and Exchange Traded Products

Monthly statistics - July 2009



DAILY TRADING



MAIN INDICATORS

	LISTED INSTRUMENTS		TRADING					
	LISTED END of MONTH	MONTH NEW LISTED	June-09		July-09		2009 YTD	
			Trades	GBP Turnover	Trades	GBP Turnover	Trades	GBP Turnover
ETF - DEVELOPED MARKET	76	-	30,931	2,278,167,033	31,495	2,190,318,490	235,454	17,306,677,783
ETF - BONDS	21	-	7,953	626,657,161	7,991	614,390,303	56,579	5,160,950,175
ETF - EMERGING MARKETS	36	-	7,393	666,536,055	6,387	572,051,808	44,313	3,640,376,946
ETF - STYLE	5	-	164	27,599,142	140	26,057,150	867	133,451,217
OTHERS	54	3	2,100	174,884,037	2,214	190,839,845	13,396	1,058,371,008
ETC	124	-	33,306	2,122,624,704	26,858	1,700,325,809	189,809	13,030,332,535
ETN	1	-	44	6,949,162	14	1,832,844	172	28,201,131
TOTAL	317	3	81,891	5,903,417,294	75,099	5,295,816,250	540,590	40,358,360,795

MOST TRADED IN THE MONTH BY TURNOVER

Name	TIDM	ISIN	GBP Turnover	% Total
1 ISHARES FTSE 100	ISF	IE0005042456	700,348,735	13.2%
2 GOLD BULLION SECURITIES	GBS	GB00B00FHZ82	304,495,003	5.7%
3 ISHARES S&P 500	IUSA	IE0031442068	288,948,296	5.5%
4 ETFs PHYSICAL GOLD	PHAU	JE00B1VS3770	248,448,832	4.7%
5 ISHARES GBP CORPORATE BOND	SLXX	IE00B00FV011	218,938,641	4.1%
6 ISHARES DJ EURO STOXX 50	EUE	IE0008471009	162,899,441	3.1%
7 ETFs LEVERAGED CRUDE OIL	LOIL	JE00B2NFTJ73	131,222,504	2.5%
8 ISHARES MSCI AC FAR EAST EX JAPAN	IFFF	IE00B0M63730	129,344,627	2.4%
9 ETFs NATURAL GAS	NGAS	GB00B15KY104	124,593,859	2.4%
10 ETFs SHORT CRUDE OIL	SOIL	JE00B24DK975	114,726,244	2.2%

MOST TRADED IN THE MONTH BY TRADES

Name	TIDM	ISIN	Trades	% Total
1 ISHARES FTSE 100	ISF	IE0005042456	16,922	22.5%
2 ETFs NATURAL GAS	NGAS	GB00B15KY104	3,373	4.5%
3 ISHARES GBP CORPORATE BOND	SLXX	IE00B00FV011	3,134	4.2%
4 ISHARES S&P 500	IUSA	IE0031442068	2,645	3.5%
5 ETFs LEVERAGED CRUDE OIL	LOIL	JE00B2NFTJ73	2,417	3.2%
6 GOLD BULLION SECURITIES	GBS	GB00B00FHZ82	2,185	2.9%
7 ETFs LEVERAGED NATURAL GAS	LNGA	JE00B2NFTQ41	2,144	2.9%
8 ETFs PHYSICAL GOLD	PHAU	JE00B1VS3770	1,847	2.5%
9 ISHARES # IDX LKD GILT	INXG	IE00B1FZSD53	1,765	2.4%
10 ETFs BRENT OIL	OILB	GB00B0CTWC01	1,590	2.1%

MOST TRADED IN THE YEAR 2009 BY TURNOVER

Name	TIDM	ISIN	GBP Turnover	% Total
1 ISHARES FTSE 100	ISF	IE0005042456	7,435,514,161	18.4%
2 GOLD BULLION SECURITIES	GBS	GB00B00FHZ82	3,831,843,843	9.5%
3 ETFs PHYSICAL GOLD	PHAU	JE00B1VS3770	2,274,918,114	5.6%
4 ISHARES S&P 500	IUSA	IE0031442068	1,388,973,220	3.4%
5 ISHARES GBP CORPORATE BOND	SLXX	IE00B00FV011	1,320,034,633	3.3%
6 ETFs LEVERAGED CRUDE OIL	LOIL	JE00B2NFTJ73	981,064,063	2.4%
7 S&P 500	IDUS	IE0031442068	978,757,126	2.4%
8 ISHARES DJ EURO STOXX 50	EUE	IE0008471009	967,145,465	2.4%
9 ISHARES # IDX LKD GILT	INXG	IE00B1FZSD53	800,016,501	2.0%
10 ETFs CRUDE OIL	CRUD	GB00B15KXV33	798,213,712	2.0%

MOST TRADED IN THE YEAR 2009 BY TRADES

Name	TIDM	ISIN	Trades	% Total
1 ISHARES FTSE 100	ISF	IE0005042456	123,965	22.9%
2 GOLD BULLION SECURITIES	GBS	GB00B00FHZ82	28,352	5.2%
3 ISHARES S&P 500	IUSA	IE0031442068	27,017	5.0%
4 ETFs LEVERAGED CRUDE OIL	LOIL	JE00B2NFTJ73	26,945	5.0%
5 ISHARES GBP CORPORATE BOND	SLXX	IE00B00FV011	24,625	4.6%
6 ETFs PHYSICAL GOLD	PHAU	JE00B1VS3770	15,852	2.9%
7 ETFs CRUDE OIL	CRUD	GB00B15KXV33	15,584	2.9%
8 ETFs BRENT OIL	OILB	GB00B0CTWC01	13,502	2.5%
9 ETFs NATURAL GAS	NGAS	GB00B15KY104	11,001	2.0%
10 ISHARES # IDX LKD GILT	INXG	IE00B1FZSD53	9,763	1.8%

<http://www.londonstockexchange.com/statistics/specialist-issues/etfs-etps/etfs-etps.htm>

Copyright © July 2009 London Stock Exchange plc. Registered in England and Wales No. 2075721. London Stock Exchange plc has used all reasonable efforts to ensure that the information contained in this publication is correct at the time of going to press, but shall not be liable for decisions made in reliance on it. London Stock Exchange and the coat of arms device are registered trademarks of London Stock Exchange plc.