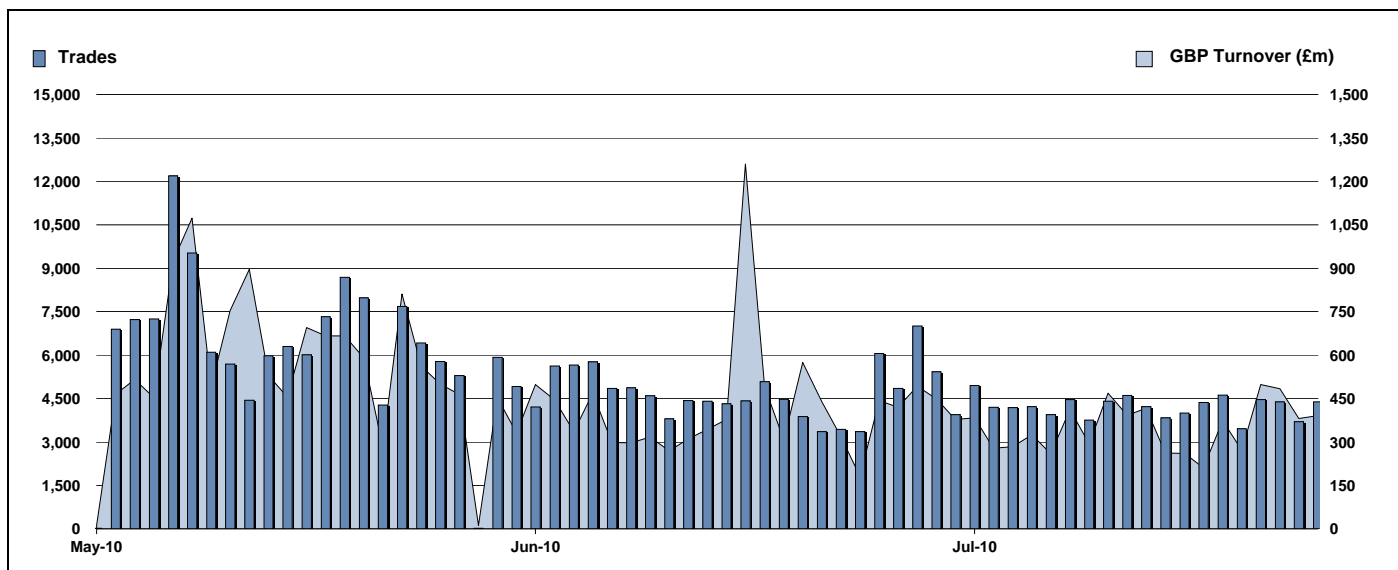


Exchange Traded Funds and Exchange Traded Products

Monthly statistics - July 2010



DAILY TRADING



MAIN INDICATORS

	LISTED INSTRUMENTS		TRADING					
	LISTED END OF MONTH	MONTH NEW LISTED	June-10		July-10		2010 YTD	
			Trades	GBP Turnover	Trades	GBP Turnover	Trades	GBP Turnover
ETF - DEVELOPED MARKET	117	-	47,636	3,429,323,121	46,626	3,270,315,633	324,689	26,953,424,268
ETF - BONDS	33	-	9,181	1,008,864,142	9,506	998,032,972	71,218	6,885,668,767
ETF - EMERGING MARKETS	40	-	11,265	2,006,119,274	9,910	773,530,539	78,317	7,125,216,228
ETF - STYLE	7	-	207	67,904,444	310	42,190,512	1,841	327,818,891
OTHERS	71	-	4,268	229,913,724	4,408	258,230,667	34,797	2,011,555,176
ETC	207	-	29,379	2,378,306,510	24,771	2,484,152,614	225,752	16,764,497,167
ETN	29	-	277	21,178,945	430	25,881,874	1,416	96,122,171
TOTAL	504	-	102,213	9,141,610,160	95,961	7,852,334,810	738,030	60,164,302,668

MOST TRADED IN THE MONTH BY TURNOVER

Name	TIDM	ISIN	GBP Turnover	% Total
1 ISHARES FTSE 100	ISF	IE0005042456	965,890,611	12.1%
2 ETFs PHYSICAL GOLD	PHAU	JE00B1VS3770	774,123,934	9.7%
3 GOLD BULLION SECURITIES	GBS	GB00B00FHZ82	381,493,625	4.8%
4 ETFs AGRICULTURE DJ-UBSCI	AIGA	GB00B15KYH63	223,048,108	2.8%
5 ISHARES MSCI EMERGING MARKET	IEEM	IE00B0M63177	181,545,626	2.3%
6 ISHARES MSCI WORLD	IWRD	IE00B0M62Q58	142,776,841	1.8%
7 ISHARES S&P 500	IUSA	IE0031442068	142,097,969	1.8%
8 ISHARES MSCI JAPAN	IJPN	IE00B02KXH56	140,353,797	1.8%
9 ISHARES FTSE UK ALL STKS GILT	IGLT	IE00B1FZSB30	136,061,929	1.7%
10 MSCI WORLD	IDWR	IE00B0M62Q58	134,736,955	1.7%

MOST TRADED IN THE MONTH BY TRADES

Name	TIDM	ISIN	Trades	% Total
1 ISHARES FTSE 100	ISF	IE0005042456	18,570	19.2%
2 ETFs PHYSICAL GOLD	PHAU	JE00B1VS3770	3,536	3.7%
3 ISHARES S&P 500	IUSA	IE0031442068	2,617	2.7%
4 ISHARES MSCI WORLD	IWRD	IE00B0M62Q58	2,461	2.5%
5 ISHARES MSCI EMERGING MARKET	IEEM	IE00B0M63177	2,274	2.4%
6 ISHARES FTSE 250	MIDD	IE00B00FV128	2,182	2.3%
7 ISHARES MARKIT IBOXX # CORPORATE BSLXX	IE00B00FV011	IE00B00FV011	2,169	2.2%
8 GOLD BULLION SECURITIES	GBS	GB00B00FHZ82	2,163	2.2%
9 ISHARES EURO STOXX 50	EUE	IE0008471009	1,979	2.0%
10 ISHARES BARCAP # INDEX-LINKED GILTS INXG	IE00B1FZSD53	IE00B1FZSD53	1,963	2.0%

MOST TRADED IN THE YEAR 2010 BY TURNOVER

Name	TIDM	ISIN	GBP Turnover	% Total
1 ISHARES FTSE 100	ISF	IE0005042456	6,584,252,530	10.9%
2 ETFs PHYSICAL GOLD	PHAU	JE00B1VS3770	3,759,642,099	6.2%
3 GOLD BULLION SECURITIES	GBS	GB00B00FHZ82	2,762,599,323	4.6%
4 MSCI EMERGING MARKETS SOURCE E'MXFS	IE00B3DWVS88	IE00B3DWVS88	1,413,551,070	2.3%
5 ISHARES S&P 500	IUSA	IE0031442068	1,371,434,206	2.3%
6 ISHARES EURO STOXX 50	EUE	IE0008471009	1,337,916,301	2.2%
7 DB X-TRACKERS \$ MONEY MKT ETF CAXUSD	LU0356691882	LU0356691882	1,288,841,019	2.1%
8 ISHARES MSCI WORLD	IWRD	IE00B0M62Q58	1,022,355,057	1.7%
9 DB X-TRACKERS # MONEY MKT ETF CAXGBP	LU0356592187	LU0356592187	1,017,843,988	1.7%
10 ISHARES MSCI EMERGING MARKET	IEEM	IE00B0M63177	951,547,805	1.6%

MOST TRADED IN THE YEAR 2010 BY TRADES

Name	TIDM	ISIN	Trades	% Total
1 ISHARES FTSE 100	ISF	IE0005042456	124,335	16.8%
2 ETFs PHYSICAL GOLD	PHAU	JE00B1VS3770	25,224	3.4%
3 ISHARES S&P 500	IUSA	IE0031442068	21,295	2.9%
4 ETFs NATURAL GAS	NGAS	GB00B15KY104	18,929	2.6%
5 ISHARES MARKIT IBOXX # CORPORATE BSLXX	IE00B00FV011	IE00B00FV011	18,030	2.4%
6 GOLD BULLION SECURITIES	GBS	GB00B00FHZ82	16,687	2.3%
7 ISHARES FTSE 250	MIDD	IE00B00FV128	14,730	2.0%
8 ISHARES BARCAP # INDEX-LINKED GILTS INXG	IE00B1FZSD53	IE00B1FZSD53	14,704	2.0%
9 ETFs LEVERAGED NATURAL GAS	LNGA	JE00B2NFTQ41	14,446	2.0%
10 ETFs LEVERAGED CRUDE OIL	LOIL	JE00B2NFTJ73	13,349	1.8%

<http://www.londonstockexchange.com/statistics/specialist-issues/etfs-etps/etfs-etps.htm>

Copyright © April 2010 London Stock Exchange plc. Registered in England and Wales No. 2075721. London Stock Exchange plc has used all reasonable efforts to ensure that the information contained in this publication is correct at the time of going to press, but shall not be liable for decisions made in reliance on it. London Stock Exchange and the coat of arms device are registered trademarks of London Stock Exchange plc.