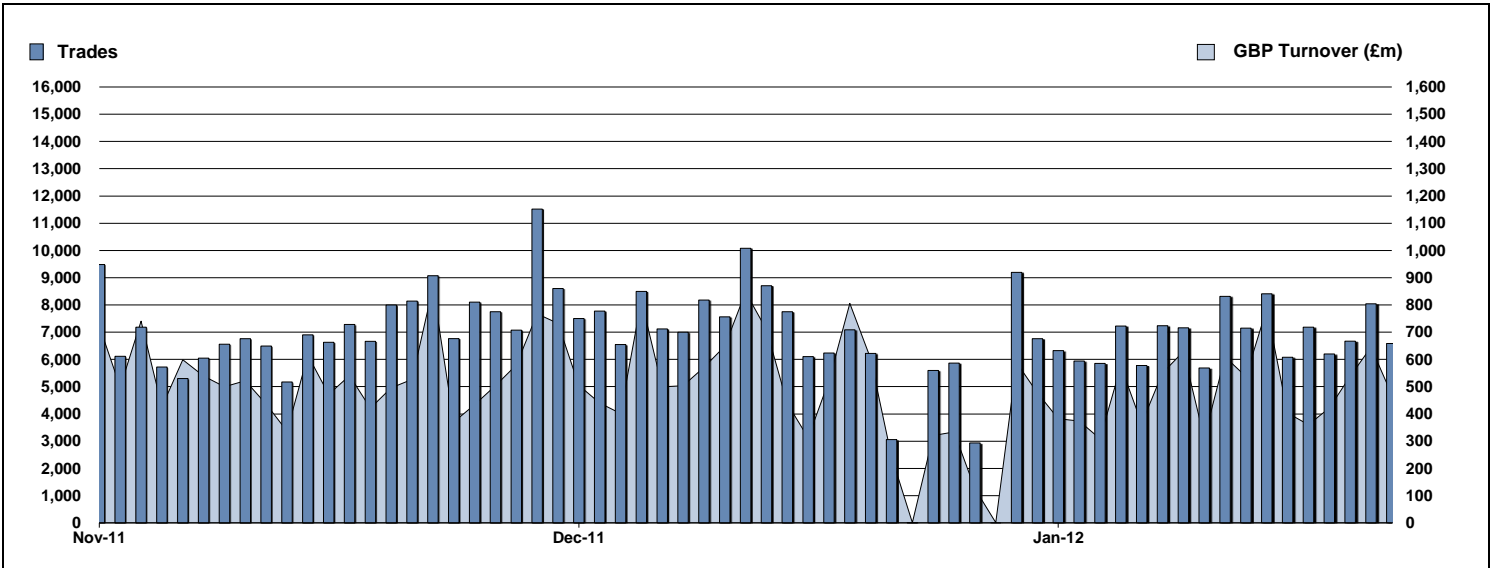


# Exchange Traded Funds and Exchange Traded Products

Monthly statistics - January 2012



## DAILY TRADING



## MAIN INDICATORS

	LISTED INSTRUMENTS		TRADING					
	LISTED END of MONTH	MONTH NEW LISTED	December-11		January-12		2012 YTD	
			Trades	GBP Turnover	Trades	GBP Turnover	Trades	GBP Turnover
ETF - DEVELOPED MARKET	256	1	59,162	4,260,521,682	62,225	3,960,613,766	62,225	3,960,613,766
ETF - EMERGING MARKETS	109	-	18,652	1,002,990,921	18,054	1,205,266,545	18,054	1,205,266,545
ETF - FIXED INCOME	65	-	16,110	2,368,134,263	16,572	2,242,797,036	16,572	2,242,797,036
ETF - SHORT & LEVERAGED	48	2	8,334	289,680,745	8,377	306,904,977	8,377	306,904,977
ETF - Others	36	7	1,540	64,784,922	1,680	116,417,122	1,680	116,417,122
ETC	302	-	34,279	2,300,343,021	38,023	2,248,963,212	38,023	2,248,963,212
ETN	46	-	145	8,864,647	154	11,859,648	154	11,859,648
<b>TOTAL</b>	<b>862</b>	<b>10</b>	<b>138,222</b>	<b>10,295,320,201</b>	<b>147,085</b>	<b>10,092,822,306</b>	<b>147,085</b>	<b>10,092,822,306</b>

## MOST TRADED IN THE MONTH BY TURNOVER

Name	TIDM	ISIN	GBP Turnover	% Total
1 ISHARES FTSE 100	ISF	IE0005042456	970,060,054	9.5%
2 ETFs PHYSICAL GOLD	PHAU	JE00B1VS3770	437,878,312	4.3%
3 SOURCE PHYSICAL GOLD P-ETC CERT SGLD	IE00B579F325	389,242,435	3.8%	
4 S&P 500	IDUS	IE0031442068	338,708,519	3.3%
5 (GBS) SEC UND ZERO CPN NTS	GBS	GB00B00FHZ82	244,526,235	2.4%
6 ISHARES MSCI EMERGING MARKET	IEEM	IE00B0M63177	235,507,342	2.3%
7 ISHARES S&P 500	IUSA	IE0031442068	234,013,527	2.3%
8 ISHARES FTSE UK ALL STKS GILT	IGLT	IE00B1FZSB30	231,002,336	2.3%
9 MSCI WORLD	IDWR	IE00B0M62Q58	181,526,985	1.8%
10 ISHARES MARKIT IBOXX EUR HIGH YIE IHYG	IE00B66F4759	178,929,753	1.8%	

## MOST TRADED IN THE MONTH BY TRADES

Name	TIDM	ISIN	Trades	% Total
1 ISHARES FTSE 100	ISF	IE0005042456	16,050	10.9%
2 ISHARES S&P 500	IUSA	IE0031442068	4,651	3.2%
3 ETFs PHYSICAL GOLD	PHAU	JE00B1VS3770	4,014	2.7%
4 ISHARES FTSE 250	MIDD	IE00B00FV128	3,447	2.3%
5 ETFs PHYSICAL GOLD £	PHGP	JE00B1VS3770	3,197	2.2%
6 ETFX FTSE 100 SUPER SHORT STRATEGY SUK2	IE00B4QNK008	3,108	2.1%	
7 ISHARES BARCAP £ INDEX-LINKED GILTS	INXG	IE00B1FZSD53	2,723	1.8%
8 ISHARES MSCI EMERGING MARKET	IEEM	IE00B0M63177	2,654	1.8%
9 DB X-TRACKERS FTSE 100 ETF	XUKX	LU0292097234	2,368	1.6%
10 (GBS) SEC UND ZERO CPN NTS	GBS	GB00B00FHZ82	2,147	1.5%

## MOST TRADED IN THE YEAR 2011 BY TURNOVER

Name	TIDM	ISIN	GBP Turnover	% Total
1 ISHARES FTSE 100	ISF	IE0005042456	970,060,054	9.5%
2 ETFs PHYSICAL GOLD	PHAU	JE00B1VS3770	437,878,312	4.3%
3 SOURCE PHYSICAL GOLD P-ETC CERT SGLD	IE00B579F325	389,242,435	3.8%	
4 S&P 500	IDUS	IE0031442068	338,708,519	3.3%
5 (GBS) SEC UND ZERO CPN NTS	GBS	GB00B00FHZ82	244,526,235	2.4%
6 ISHARES MSCI EMERGING MARKET	IEEM	IE00B0M63177	235,507,342	2.3%
7 ISHARES S&P 500	IUSA	IE0031442068	234,013,527	2.3%
8 ISHARES FTSE UK ALL STKS GILT	IGLT	IE00B1FZSB30	231,002,336	2.3%
9 MSCI WORLD	IDWR	IE00B0M62Q58	181,526,985	1.8%
10 ISHARES MARKIT IBOXX EUR HIGH YIE IHYG	IE00B66F4759	178,929,753	1.8%	

## MOST TRADED IN THE YEAR 2011 BY TRADES

Name	TIDM	ISIN	Trades	% Total
1 ISHARES FTSE 100	ISF	IE0005042456	16,050	10.9%
2 ISHARES S&P 500	IUSA	IE0031442068	4,651	3.2%
3 ETFs PHYSICAL GOLD	PHAU	JE00B1VS3770	4,014	2.7%
4 ISHARES FTSE 250	MIDD	IE00B00FV128	3,447	2.3%
5 ETFs PHYSICAL GOLD £	PHGP	JE00B1VS3770	3,197	2.2%
6 ETFX FTSE 100 SUPER SHORT STRATEGY SUK2	IE00B4QNK008	3,108	2.1%	
7 ISHARES BARCAP £ INDEX-LINKED GILTS	INXG	IE00B1FZSD53	2,723	1.8%
8 ISHARES MSCI EMERGING MARKET	IEEM	IE00B0M63177	2,654	1.8%
9 DB X-TRACKERS FTSE 100 ETF	XUKX	LU0292097234	2,368	1.6%
10 (GBS) SEC UND ZERO CPN NTS	GBS	GB00B00FHZ82	2,147	1.5%

<http://www.londonstockexchange.com/statistics/specialist-issues/etfs-etps/etfs-etps.htm>

Copyright © 2012 London Stock Exchange plc. Registered in England and Wales No. 2075721. London Stock Exchange plc has used all reasonable efforts to ensure that the information contained in this publication is correct at the time of going to press, but shall not be liable for decisions made in reliance on it. London Stock Exchange and the coat of arms device are registered trademarks of London Stock Exchange plc.