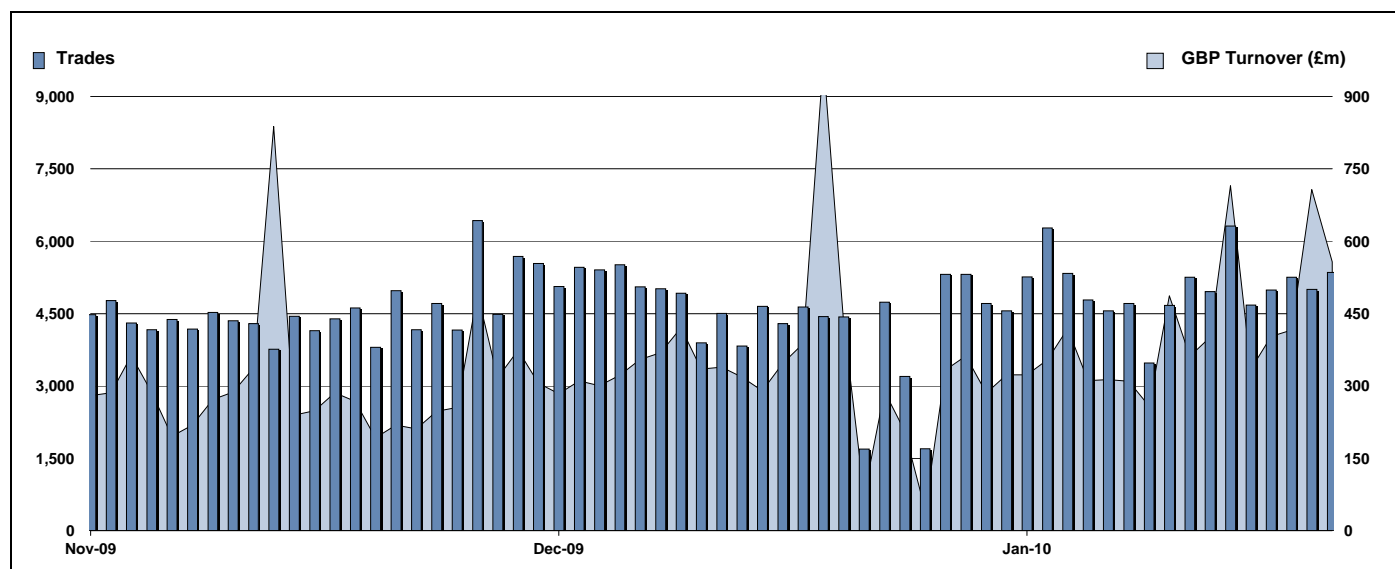


# Exchange Traded Funds and Exchange Traded Products

Monthly statistics - January 2010



## DAILY TRADING



## MAIN INDICATORS

	LISTED INSTRUMENTS		TRADING					
	LISTED END OF MONTH	MONTH NEW LISTED	December-09		January-10		2010 YTD	
			Trades	GBP Turnover	Trades	GBP Turnover	Trades	GBP Turnover
ETF - DEVELOPED MARKET	95	5	32,504	3,381,393,608	37,766	3,692,944,071	37,766	3,692,944,071
ETF - BONDS	31	-	9,868	1,000,977,812	10,161	854,490,783	10,161	854,490,783
ETF - EMERGING MARKETS	37	-	8,778	644,068,812	11,148	844,489,932	11,148	844,489,932
ETF - STYLE	5	-	317	33,894,551	211	44,748,657	211	44,748,657
OTHERS	67	9	4,387	216,040,158	4,744	292,173,144	4,744	292,173,144
ETC	148	-	37,794	1,805,373,832	36,674	2,235,111,368	36,674	2,235,111,368
ETN	1	-	22	4,293,445	33	7,120,590	33	7,120,590
<b>TOTAL</b>	<b>384</b>	<b>14</b>	<b>93,670</b>	<b>7,086,042,218</b>	<b>100,737</b>	<b>7,971,078,544</b>	<b>100,737</b>	<b>7,971,078,544</b>

## MOST TRADED IN THE MONTH BY TURNOVER

Name	TIDM	ISIN	GBP Turnover	% Total
1 ISHARES FTSE 100	ISF	IE0005042456	927,755,765	11.6%
2 DB X-TRACKERS \$ MONEY MKT ETF C/XUSD	LU0356591882		385,277,403	4.8%
3 ETFs PHYSICAL GOLD	PHAU	JE00B1VS3770	354,051,357	4.4%
4 DB X-TRACKERS # MONEY MKT ETF C/XGBP	LU0356592187		314,062,255	3.9%
5 LYXOR ETF FTSE 100	L100	FR0010438127	297,241,736	3.7%
6 ETFs AGRICULTURE DJ-AIGCI	AIGA	GB00B15KYH63	294,850,586	3.7%
7 GOLD BULLION SECURITIES	GBS	GB00B00FHZ82	279,654,899	3.5%
8 S&P 500	IDUS	IE0031442068	158,256,910	2.0%
9 ISHARES DJ EURO STOXX 50	EUE	IE0008471009	146,763,851	1.8%
10 ISHARES GBP CORPORATE BOND	SLXX	IE00B00FV011	137,296,902	1.7%

## MOST TRADED IN THE MONTH BY TRADES

Name	TIDM	ISIN	Trades	% Total
1 ISHARES FTSE 100	ISF	IE0005042456	15,018	14.9%
2 ETFs NATURAL GAS	NGAS	GB00B15KY104	6,254	6.2%
3 ISHARES GBP CORPORATE BOND	SLXX	IE00B00FV011	3,094	3.1%
4 ETFs PHYSICAL GOLD	PHAU	JE00B1VS3770	2,959	2.9%
5 ETFs LEVERAGED CRUDE OIL	LOIL	JE00B2NFTJ73	2,349	2.3%
6 DB X-TRACKERS \$ MONEY MKT ETF CAP	XUSD	LU0356591882	2,289	2.3%
7 ETFs LEVERAGED NATURAL GAS	LNGA	JE00B2NFTQ41	2,274	2.3%
8 GOLD BULLION SECURITIES	GBS	GB00B00FHZ82	2,071	2.1%
9 ISHARES # IDX LKD GILT	INXG	IE00B1FZSD53	2,018	2.0%
10 ISHARES S&P 500	IUSA	IE0031442068	1,902	1.9%

## MOST TRADED IN THE YEAR 2010 BY TURNOVER

Name	TIDM	ISIN	GBP Turnover	% Total
1 ISHARES FTSE 100	ISF	IE0005042456	927,755,765	11.6%
2 DB X-TRACKERS \$ MONEY MKT ETF C/XUSD	LU0356591882		385,277,403	4.8%
3 ETFs PHYSICAL GOLD	PHAU	JE00B1VS3770	354,051,357	4.4%
4 DB X-TRACKERS # MONEY MKT ETF C/XGBP	LU0356592187		314,062,255	3.9%
5 LYXOR ETF FTSE 100	L100	FR0010438127	297,241,736	3.7%
6 ETFs AGRICULTURE DJ-AIGCI	AIGA	GB00B15KYH63	294,850,586	3.7%
7 GOLD BULLION SECURITIES	GBS	GB00B00FHZ82	279,654,899	3.5%
8 S&P 500	IDUS	IE0031442068	158,256,910	2.0%
9 ISHARES DJ EURO STOXX 50	EUE	IE0008471009	146,763,851	1.8%
10 ISHARES GBP CORPORATE BOND	SLXX	IE00B00FV011	137,296,902	1.7%

## MOST TRADED IN THE YEAR 2010 BY TRADES

Name	TIDM	ISIN	Trades	% Total
1 ISHARES FTSE 100	ISF	IE0005042456	15,018	14.9%
2 ETFs NATURAL GAS	NGAS	GB00B15KY104	6,254	6.2%
3 ISHARES GBP CORPORATE BOND	SLXX	IE00B00FV011	3,094	3.1%
4 ETFs PHYSICAL GOLD	PHAU	JE00B1VS3770	2,959	2.9%
5 ETFs LEVERAGED CRUDE OIL	LOIL	JE00B2NFTJ73	2,349	2.3%
6 DB X-TRACKERS \$ MONEY MKT ETF CAP	XUSD	LU0356591882	2,289	2.3%
7 ETFs LEVERAGED NATURAL GAS	LNGA	JE00B2NFTQ41	2,274	2.3%
8 GOLD BULLION SECURITIES	GBS	GB00B00FHZ82	2,071	2.1%
9 ISHARES # IDX LKD GILT	INXG	IE00B1FZSD53	2,018	2.0%
10 ISHARES S&P 500	IUSA	IE0031442068	1,902	1.9%

<http://www.londonstockexchange.com/statistics/specialist-issues/etfs-etps/etfs-etps.htm>

Copyright © January 2010 London Stock Exchange plc. Registered in England and Wales No. 2075721. London Stock Exchange plc has used all reasonable efforts to ensure that the information contained in this publication is correct at the time of going to press, but shall not be liable for decisions made in reliance on it. London Stock Exchange and the coat of arms device are registered trademarks of London Stock Exchange plc.