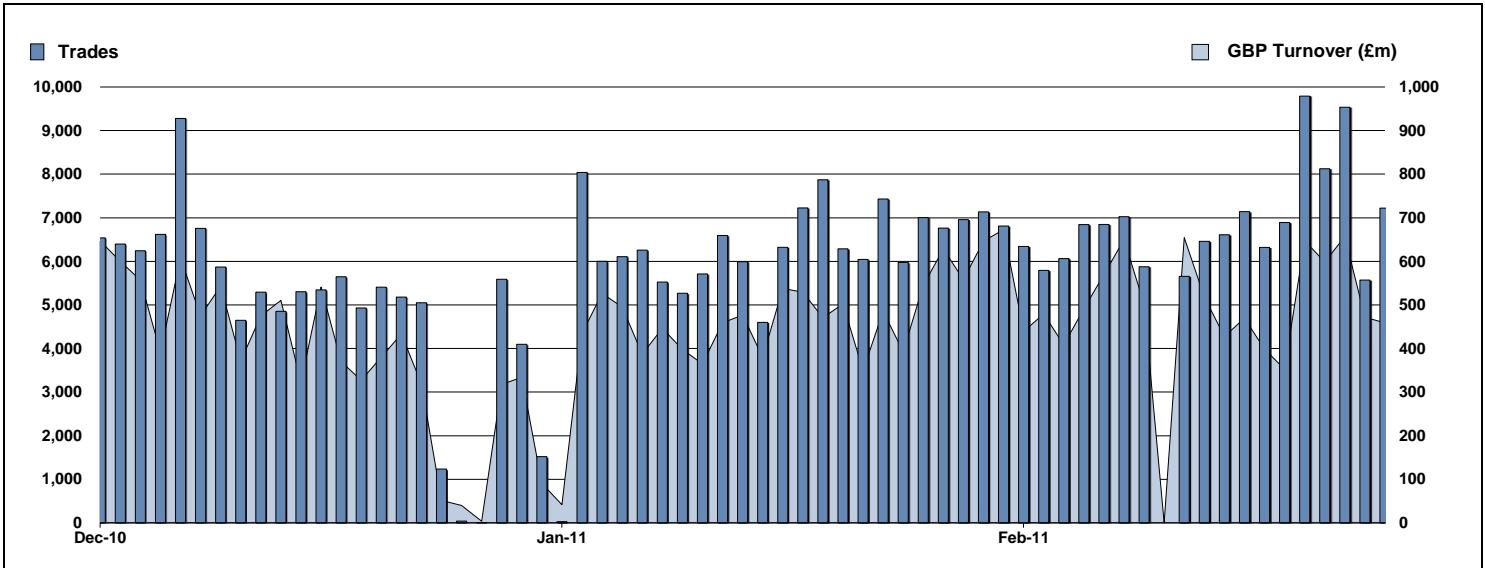


# Exchange Traded Funds and Exchange Traded Products

Monthly statistics - February 2011



## DAILY TRADING



## MAIN INDICATORS

	LISTED INSTRUMENTS		TRADING					
	LISTED END OF MONTH	MONTH NEW LISTED	January-11		February-11		2010	
			Trades	GBP Turnover	Trades	GBP Turnover	Trades	GBP Turnover
ETF - DEVELOPED MARKET	117	-	46,280	3,448,471,548	48,771	4,057,483,545	543,021	41,237,961,910
ETC	223	-	39,989	2,559,889,322	46,607	2,960,500,939	393,653	29,897,853,941
ETF - EMERGING MARKETS	40	-	17,048	1,358,980,845	18,017	1,246,255,251	148,931	15,988,005,642
ETF - BONDS	33	-	11,129	1,002,977,472	9,800	762,537,154	121,088	12,614,496,990
OTHERS	71	-	7,671	361,128,816	8,595	778,269,463	64,634	3,814,874,153
ETF - STYLE	7	-	338	32,393,930	415	85,553,779	2,994	493,048,276
ETN	30	-	561	55,253,881	488	27,210,664	5,602	395,156,237
<b>TOTAL</b>	<b>521</b>	<b>-</b>	<b>123,016</b>	<b>8,819,095,814</b>	<b>132,693</b>	<b>9,917,810,795</b>	<b>1,279,923</b>	<b>104,441,397,148</b>

## MOST TRADED IN THE MONTH BY TURNOVER

Name	TIDM	ISIN	GBP Turnover	% Total
1 ISHARES FTSE 100	ISF	IE0005042456	774,939,541	8.9%
2 ETFs PHYSICAL GOLD	PHAU	JE00B1VS3770	448,790,885	5.2%
3 FTSE EPRA/NAREIT DEV MKT PTY YLD	IDWP	IE00B1FZS350	332,619,753	3.8%
4 ISHARES S&P 500	IUSA	IE0031442068	296,192,169	3.4%
5 RDX SOURCE ETF	RDXS	IE00B5NDLN01	270,669,802	3.1%
6 S&P 500	IDUS	IE0031442068	257,382,642	3.0%
7 ETFs CRUDE OIL	CRUD	GB00B15KXV33	253,874,996	2.9%
8 ISHARES MSCI EMERGING MARKET	IEEM	IE00B0M63177	232,301,568	2.7%
9 ISHARES EURO STOXX 50	EUE	IE0008471009	230,123,612	2.6%
10 ETFs BRENT OIL	OILB	GB00B0CTWC01	227,896,766	2.6%

## MOST TRADED IN THE MONTH BY TRADES

Name	TIDM	ISIN	Trades	% Total
1 ISHARES FTSE 100	ISF	IE0005042456	17,077	12.4%
2 ETFs LEVERAGED CRUDE OIL	LOIL	JE00B2NFTJ73	3,702	2.7%
3 ISHARES S&P 500	IUSA	IE0031442068	3,224	2.3%
4 ETFs CRUDE OIL	CRUD	GB00B15KXV33	3,067	2.2%
5 ETFs PHYSICAL GOLD	PHAU	JE00B1VS3770	3,034	2.2%
6 ISHARES MSCI EMERGING MARKET	IEEM	IE00B0M63177	3,008	2.2%
7 ISHARES FTSE UK DIVIDEND PLUS	IUKD	IE00B0M63060	2,410	1.7%
8 ETFs LEVERAGED NATURAL GAS	LNGA	JE00B2NFTQ41	2,190	1.6%
9 ISHARES FTSE 250	MIDD	IE00B00FV128	2,079	1.5%
10 ISHARES MARKIT IBOXX £ CORPORATE B	SLXX	IE00B00FV011	2,076	1.5%

## MOST TRADED IN THE YEAR 2011 BY TURNOVER

Name	TIDM	ISIN	GBP Turnover	% Total
1 ISHARES FTSE 100	ISF	IE0005042456	1,362,719,955	1.3%
2 ETFs PHYSICAL GOLD	PHAU	JE00B1VS3770	1,040,664,592	1.0%
3 RDX SOURCE ETF	RDXS	IE00B5NDLN01	649,793,183	0.6%
4 ISHARES S&P 500	IUSA	IE0031442068	573,184,877	0.5%
5 GOLD BULLION SECURITIES	GBS	GB00B00FHZ82	552,580,656	0.5%
6 S&P 500	IDUS	IE0031442068	468,903,808	0.4%
7 ISHARES MSCI EMERGING MARKET	IEEM	IE00B0M63177	460,659,237	0.4%
8 MSCI EMERGING MARKETS	IDEM	IE00B0M63177	416,313,381	0.4%
9 ISHARES EURO STOXX 50	EUE	IE0008471009	396,337,380	0.4%
10 FTSE EPRA/NAREIT DEV MKT PTY YLD	IDWP	IE00B1FZS350	359,601,128	0.3%

## MOST TRADED IN THE YEAR 2011 BY TRADES

Name	TIDM	ISIN	Trades	% Total
1 ISHARES FTSE 100	ISF	IE0005042456	29,923	2.3%
2 ETFs PHYSICAL GOLD	PHAU	JE00B1VS3770	6,475	0.5%
3 ISHARES S&P 500	IUSA	IE0031442068	6,227	0.5%
4 ISHARES MSCI EMERGING MARKET	IEEM	IE00B0M63177	5,301	0.4%
5 ETFs LEVERAGED CRUDE OIL	LOIL	JE00B2NFTJ73	5,080	0.4%
6 ISHARES FTSE 250	MIDD	IE00B00FV128	4,868	0.4%
7 ETFs LEVERAGED NATURAL GAS	LNGA	JE00B2NFTQ41	4,497	0.3%
8 ISHARES MARKIT IBOXX £ CORPORATE B	SLXX	IE00B00FV011	4,336	0.3%
9 GOLD BULLION SECURITIES	GBS	GB00B00FHZ82	4,290	0.3%
10 ISHARES FTSE UK DIVIDEND PLUS	IUKD	IE00B0M63060	4,284	0.3%

<http://www.londonstockexchange.com/statistics/specialist-issues/etfs-etps/etfs-etps.htm>

Copyright © April 2010 London Stock Exchange plc. Registered in England and Wales No. 2075721. London Stock Exchange plc has used all reasonable efforts to ensure that the information contained in this publication is correct at the time of going to press, but shall not be liable for decisions made in reliance on it. London Stock Exchange and the coat of arms device are registered trademarks of London Stock Exchange plc.