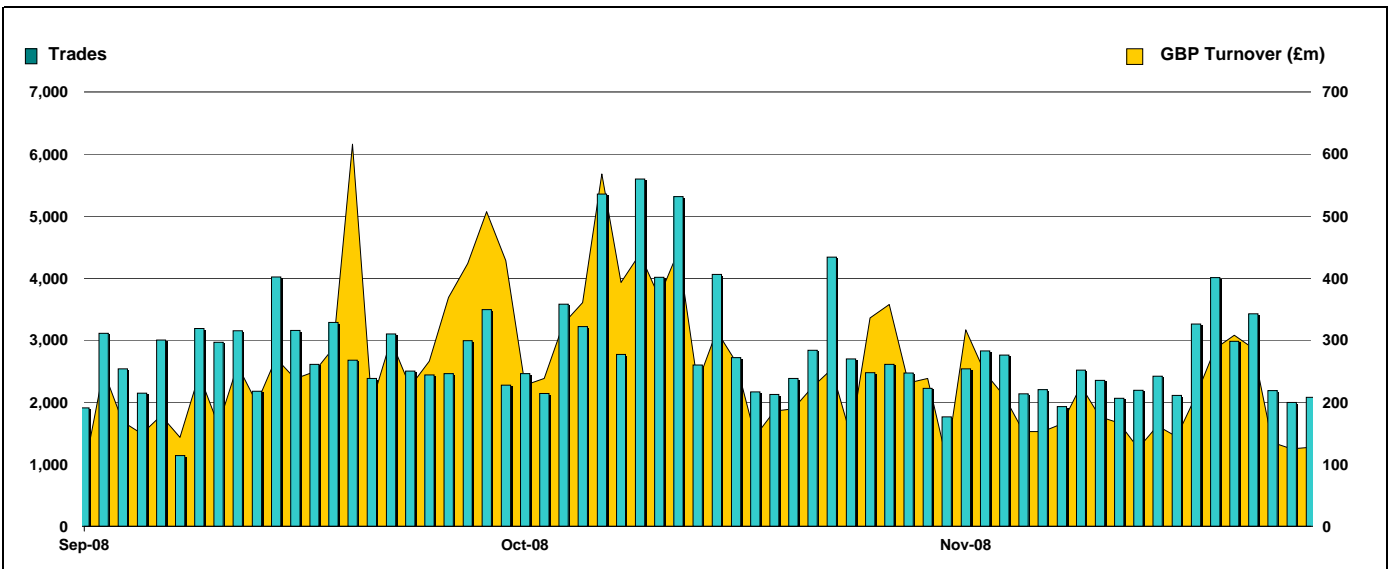


Exchange Traded Funds and Exchange Traded Commodities

Monthly statistics - November 2008

DAILY TRADING



MAIN INDICATORS

	LISTED INSTRUMENTS		TRADING					
	LISTED END of MONTH	MONTH NEW LISTED	October-08		November-08		2008 YTD	
			Trades	GBP Turnover	Trades	GBP Turnover	Trades	GBP Turnover
ETF - DEVELOPED MARKET	70	2	43,540	4,273,513,196	27,519	2,156,945,522	236,000	22,789,624,729
ETF - BONDS	14	-	4,909	562,722,794	5,561	586,429,528	32,043	3,556,457,277
ETF - EMERGING MARKETS	39	-	6,083	524,840,030	4,733	253,921,414	79,572	3,694,396,748
ETF - STYLE	5	-	60	27,299,317	38	1,136,962	345	61,906,687
OTHERS	54	12	1,984	144,674,519	983	70,817,270	21,286	1,140,854,493
ETC	123	-	15,866	1,378,735,609	10,916	762,846,710	291,432	19,157,744,238
TOTAL	305	14	72,442	6,911,785,466	49,750	3,832,097,407	660,678	50,400,984,173

MOST TRADED IN THE MONTH BY TURNOVER

Name	TIDM	ISIN	GBP Turnover	% Total
1 ISHARES FTSE 100	ISF	IE0005042456	1,064,803,304	27.8%
2 LYXOR GOLD	GBS	GB00B00FHZ82	218,445,863	5.7%
3 ETFs PHYSICAL GOLD	PHAU	JE00B1VS3770	168,776,130	4.4%
4 ISHARES DJ EURO STOXX 50	EUE	IE0008471009	156,475,295	4.1%
5 ISHARES S&P 500	IUSA	IE0031442068	141,847,216	3.7%
6 ISHARES GBP CORPORATE BOND	SLXX	IE00B00FV011	101,615,584	2.7%
7 ISHARES FTSE UK ALL STKS GILT	IGLT	IE00B1FZSB30	99,440,559	2.6%
8 S&P 500	IDUS	IE0031442068	94,666,341	2.5%
9 ISHARES FTSE 250	MIDD	IE00B00FV128	64,680,499	1.7%
10 ISHARES MSCI WORLD	IWRD	IE00B0M62Q58	61,344,781	1.6%

MOST TRADED IN THE MONTH BY TRADES

Name	TIDM	ISIN	Trades	% Total
1 ISHARES FTSE 100	ISF	IE0005042456	15,889	31.9%
2 LYXOR GOLD	GBS	GB00B00FHZ82	2,979	6.0%
3 ISHARES S&P 500	IUSA	IE0031442068	2,723	5.5%
4 ISHARES GBP CORPORATE BOND	SLXX	IE00B00FV011	2,088	4.2%
5 ISHARES FTSE UK ALL STKS GILT	IGLT	IE00B1FZSB30	1,216	2.4%
6 ISHARES FTSE 250	MIDD	IE00B00FV128	1,147	2.3%
7 ISHARES FTSE UK DIVIDEND PLUS	IUKD	IE00B0M63060	966	1.9%
8 ETFs PHYSICAL GOLD	PHAU	JE00B1VS3770	959	1.9%
9 ETFs BRENT OIL	OILB	GB00B0CTWC01	834	1.7%
10 ISHARES GOVERNMENT BOND 1-3	IBGS	IE00B14XQ057	687	1.4%

MOST TRADED IN THE YEAR 2008 BY TURNOVER

Name	TIDM	ISIN	GBP Turnover	% Total
1 ISHARES FTSE 100	ISF	IE0005042456	10,425,238,935	20.7%
2 LYXOR GOLD	GBS	GB00B00FHZ82	3,934,344,708	7.8%
3 ETFs PHYSICAL GOLD	PHAU	JE00B1VS3770	3,369,777,252	6.7%
4 ETFs SHORT CRUDE OIL	SOIL	JE00B24DK975	2,880,480,017	5.7%
5 ISHARES S&P 500	IUSA	IE0031442068	1,823,395,334	3.6%
6 ISHARES DJ EURO STOXX 50	EUE	IE0008471009	1,715,547,001	3.4%
7 ISHARES GBP CORPORATE BOND	SLXX	IE00B00FV011	1,119,832,718	2.2%
8 ETFs AGRICULTURE DJ-AIGCI	AIGA	GB00B15KYH63	960,255,327	1.9%
9 ISHARES FTSE 250	MIDD	IE00B00FV128	959,241,217	1.9%
10 ETFs PHYSICAL PLATINUM	PHPT	JE00B1VS2W53	821,881,534	1.6%

MOST TRADED IN THE YEAR 2008 BY TRADES

Name	TIDM	ISIN	Trades	% Total
1 ISHARES FTSE 100	ISF	IE0005042456	109,820	16.6%
2 LYXOR GOLD	GBS	GB00B00FHZ82	33,822	5.1%
3 ETFs PHYSICAL GOLD	PHAU	JE00B1VS3770	22,401	3.4%
4 ISHARES S&P 500	IUSA	IE0031442068	22,133	3.4%
5 ETFs AGRICULTURE DJ-AIGCI	AIGA	GB00B15KYH63	19,556	3.0%
6 ETFs PHYSICAL SILVER	PHAG	JE00B1VS3333	16,364	2.5%
7 ISHARES FTSE UK DIVIDEND PLUS	IUKD	IE00B0M63060	15,823	2.4%
8 ISHARES FTSE 250	MIDD	IE00B00FV128	15,557	2.4%
9 ISHARES MSCI BRAZIL	IBZL	IE00B0M63516	14,289	2.2%
10 ISHARES GBP CORPORATE BOND	SLXX	IE00B00FV011	11,656	1.8%

www.londonstockexchange.com/etfstats

Copyright © November 2008 London Stock Exchange plc. Registered in England and Wales No. 2075721. London Stock Exchange plc has used all reasonable efforts to ensure that the information contained in this publication is correct at the time of going to press, but shall not be liable for decisions made in reliance on it. London Stock Exchange and the coat of arms device are registered trademarks of London Stock Exchange plc.