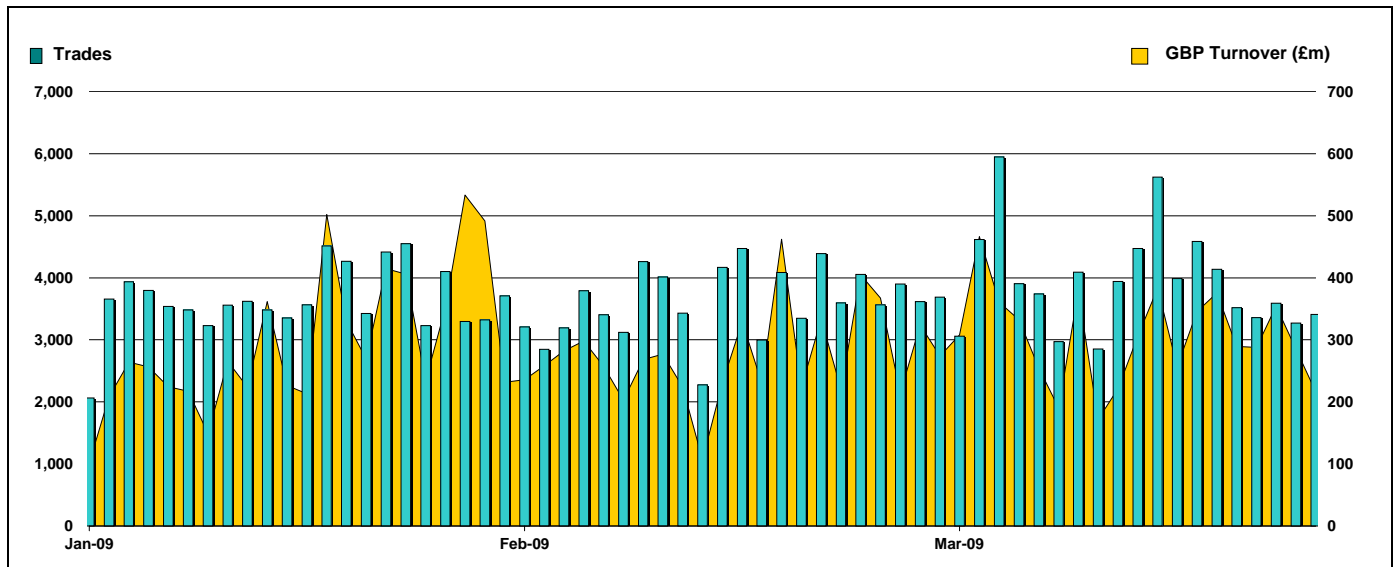


Exchange Traded Funds and Exchange Traded Products

Monthly statistics - March 2009

DAILY TRADING



MAIN INDICATORS

	LISTED INSTRUMENTS		TRADING					
	LISTED END OF MONTH	MONTH NEW LISTED	February-09		March-09		2009 YTD	
			Trades	GBP Turnover	Trades	GBP Turnover	Trades	GBP Turnover
ETF - DEVELOPED MARKET	75	-	30,604	2,494,047,177	44,859	3,113,124,587	109,553	8,006,753,913
ETF - BONDS	17	4	7,012	612,461,266	7,724	857,826,912	24,513	2,697,678,274
ETF - EMERGING MARKETS	41	2	5,123	316,262,391	6,097	514,856,938	15,609	1,108,878,216
ETF - STYLE	7	-	116	13,130,399	90	7,943,966	317	48,733,507
OTHERS	53	-	1,217	100,453,518	1,638	103,302,070	4,262	309,780,819
ETC	123	-	27,858	1,907,202,383	25,861	1,995,260,488	80,335	6,109,985,520
ETN	1	1	-	-	7	2,938,689	7	2,938,689
TOTAL	317	7	71,930	5,443,557,135	86,276	6,595,253,649	234,596	18,284,748,939

MOST TRADED IN THE MONTH BY TURNOVER

Name	TIDM	ISIN	GBP Turnover	% Total
1 ISHARES FTSE 100	ISF	IE0005042456	1,562,653,191	23.7%
2 GOLD BULLION SECURITIES	GBS	GB00B00FHZ82	785,386,031	11.9%
3 ETFs PHYSICAL GOLD	PHAU	JE00B1VS3770	324,094,452	4.9%
4 ISHARES S&P 500	IUSA	IE0031442068	247,190,410	3.7%
5 S&P 500	IDUS	IE0031442068	210,299,270	3.2%
6 ISHARES EUR CORPORATE BOND	IBCX	IE0032523478	201,742,737	3.1%
7 ISHARES GBP CORPORATE BOND	SLXX	IE00B00FV011	178,411,577	2.7%
8 ISHARES FTSE UK ALL STKS GILT	IGLT	IE00B1FZSB30	152,813,921	2.3%
9 ETFs CRUDE OIL	CRUD	GB00B15KXV33	127,548,007	1.9%
10 ETFs LEVERAGED CRUDE OIL	LOIL	JE00B2NFTJ73	123,870,912	1.9%

MOST TRADED IN THE MONTH BY TRADES

Name	TIDM	ISIN	Trades	% Total
1 ISHARES FTSE 100	ISF	IE0005042456	23,486	27.2%
2 ISHARES S&P 500	IUSA	IE0031442068	7,351	8.5%
3 GOLD BULLION SECURITIES	GBS	GB00B00FHZ82	4,805	5.6%
4 ETFs LEVERAGED CRUDE OIL	LOIL	JE00B2NFTJ73	4,050	4.7%
5 ISHARES GBP CORPORATE BOND	SLXX	IE00B00FV011	3,484	4.0%
6 ETFs PHYSICAL GOLD	PHAU	JE00B1VS3770	2,792	3.2%
7 ETFs CRUDE OIL	CRUD	GB00B15KXV33	2,413	2.8%
8 ETFs BRENT OIL	OILB	GB00B0CTWC01	2,063	2.4%
9 ISHARES FTSE UK ALL STKS GILT	IGLT	IE00B1FZSB30	1,856	2.2%
10 ISHARES FTSE 250	MIDD	IE00B00FV128	1,488	1.7%

MOST TRADED IN THE YEAR 2009 BY TURNOVER

Name	TIDM	ISIN	GBP Turnover	% Total
1 ISHARES FTSE 100	ISF	IE0005042456	3,663,574,212	20.0%
2 GOLD BULLION SECURITIES	GBS	GB00B00FHZ82	2,200,571,927	12.0%
3 ETFs PHYSICAL GOLD	PHAU	JE00B1VS3770	1,362,498,436	7.5%
4 ISHARES GBP CORPORATE BOND	SLXX	IE00B00FV011	636,999,116	3.5%
5 ISHARES S&P 500	IUSA	IE0031442068	596,598,942	3.3%
6 S&P 500	IDUS	IE0031442068	536,327,724	2.9%
7 ISHARES DJ EURO STOXX 50	EUE	IE0008471009	455,191,778	2.5%
8 ETFs CRUDE OIL	CRUD	GB00B15KXV33	453,574,616	2.5%
9 ETFs LEVERAGED CRUDE OIL	LOIL	JE00B2NFTJ73	427,420,886	2.3%
10 ISHARES # IDX LKD GILT	INXG	IE00B1FZSD53	390,774,428	2.1%

MOST TRADED IN THE YEAR 2009 BY TRADES

Name	TIDM	ISIN	Trades	% Total
1 ISHARES FTSE 100	ISF	IE0005042456	60,125	25.6%
2 GOLD BULLION SECURITIES	GBS	GB00B00FHZ82	15,925	6.8%
3 ETFs LEVERAGED CRUDE OIL	LOIL	JE00B2NFTJ73	14,817	6.3%
4 ISHARES S&P 500	IUSA	IE0031442068	13,408	5.7%
5 ISHARES GBP CORPORATE BOND	SLXX	IE00B00FV011	11,898	5.1%
6 ETFs CRUDE OIL	CRUD	GB00B15KXV33	8,600	3.7%
7 ETFs PHYSICAL GOLD	PHAU	JE00B1VS3770	8,176	3.5%
8 ETFs BRENT OIL	OILB	GB00B0CTWC01	6,462	2.8%
9 ISHARES FTSE UK ALL STKS GILT	IGLT	IE00B1FZSB30	4,488	1.9%
10 ISHARES FTSE 250	MIDD	IE00B00FV128	3,605	1.5%

www.londonstockexchange.com/etfstats

Copyright © March 2009 London Stock Exchange plc. Registered in England and Wales No. 2075721. London Stock Exchange plc has used all reasonable efforts to ensure that the information contained in this publication is correct at the time of going to press, but shall not be liable for decisions made in reliance on it. London Stock Exchange and the coat of arms device are registered trademarks of London Stock Exchange plc.

