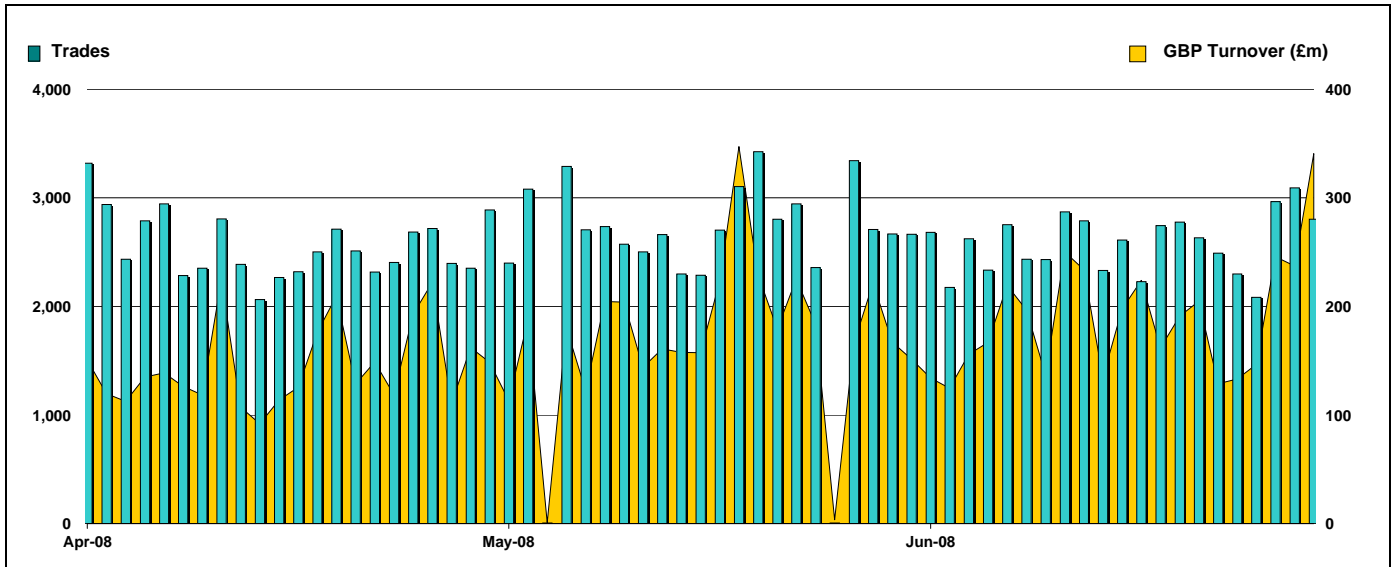


Exchange Traded Funds and Exchange Traded Commodities

Monthly statistics - June 2008

DAILY TRADING



MAIN INDICATORS

	LISTED INSTRUMENTS		TRADING					
	LISTED END of MONTH	MONTH NEW LISTED	May-08		June-08		2008 YTD	
			Trades	GBP Turnover	Trades	GBP Turnover	Trades	GBP Turnover
ETF - DEVELOPED MARKET	67	1	15,389	1,381,708,908	15,857	1,495,003,035	105,910	9,596,842,611
ETF - BONDS	12	-	2,121	176,939,910	2,088	170,592,464	11,963	1,460,233,649
ETF - EMERGING MARKETS	39	-	10,140	441,129,868	7,564	315,978,283	50,724	2,028,618,586
ETF - STYLE	3	-	14	1,324,020	18	119,508	157	6,905,703
OTHERS	21	-	2,216	69,234,971	1,960	92,611,541	12,851	493,778,666
ETC	122	-	25,383	1,659,983,739	26,663	1,890,072,059	185,161	9,746,999,763
TOTAL	264	1	55,263	3,730,321,417	54,150	3,964,376,890	366,766	23,333,378,979

MOST TRADED IN THE MONTH BY TURNOVER

Name	TIDM	ISIN	GBP Turnover	% Total
1 ISHARES FTSE 100	ISF	IE0005042456	743,742,889	18.8%
2 SHORT CRUDE OIL	SOIL	JE00B24DK975	417,807,226	10.5%
3 ETFs PHYSICAL GOLD	PHAU	JE00B1VS3770	398,042,169	10.0%
4 LYXOR GOLD	GBS	GB00B00FHZ82	197,963,466	5.0%
5 ISHARES S&P 500	IUSA	IE0031442068	152,541,963	3.8%
6 ETFs BRENT OIL	OILB	GB00B0CTWC01	133,471,642	3.4%
7 ISHARES MSCI WORLD	IWRD	IE00B0M62Q58	105,801,241	2.7%
8 ETFs AGRICULTURE DJ-AIGCI	AIGA	GB00B15KYH63	88,219,705	2.2%
9 ISHARES MSCI JAPAN	IJPN	IE00B02KXH56	69,532,500	1.8%
10 ETFs WHEAT	WEAT	GB00B15KY765	62,111,018	1.6%

MOST TRADED IN THE MONTH BY TRADES

Name	TIDM	ISIN	Trades	% Total
1 ISHARES FTSE 100	ISF	IE0005042456	6,413	11.8%
2 LYXOR GOLD	GBS	GB00B00FHZ82	2,059	3.8%
3 ETFs PHYSICAL GOLD	PHAU	JE00B1VS3770	1,899	3.5%
4 SHORT CRUDE OIL	SOIL	JE00B24DK975	1,825	3.4%
5 ETFs AGRICULTURE DJ-AIGCI	AIGA	GB00B15KYH63	1,696	3.1%
6 ISHARES S&P 500	IUSA	IE0031442068	1,440	2.7%
7 MSCI BRAZIL	IBZL	IE00B0M63516	1,326	2.4%
8 ETFs PHYSICAL SILVER	PHAG	JE00B1VS3333	1,315	2.4%
9 ISHARES FTSE UK DIVIDEND PLUS	IUKD	IE00B0M63060	1,295	2.4%
10 ETFs BRENT OIL	OILB	GB00B0CTWC01	1,254	2.3%

MOST TRADED IN THE YEAR 2008 BY TURNOVER

Name	TIDM	ISIN	GBP Turnover	% Total
1 ISHARES FTSE 100	ISF	IE0005042456	4,981,068,162	21.3%
2 LYXOR GOLD	GBS	GB00B00FHZ82	1,970,420,905	8.4%
3 ETFs PHYSICAL GOLD	PHAU	JE00B1VS3770	1,626,919,165	7.0%
4 ISHARES GBP CORPORATE BOND	SLXX	IE00B00FV011	756,162,930	3.2%
5 ISHARES S&P 500	IUSA	IE0031442068	670,365,854	2.9%
6 ETFs AGRICULTURE DJ-AIGCI	AIGA	GB00B15KYH63	659,917,984	2.8%
7 ISHARES DJ EURO STOXX 50	EUE	IE0008471009	657,002,185	2.8%
8 ISHARES FTSE 250	MIDD	IE00B00FV128	635,758,529	2.7%
9 SHORT CRUDE OIL	SOIL	JE00B24DK975	608,110,977	2.6%
10 ETFs PHYSICAL PLATINUM	PHPT	JE00B1VS2W53	514,469,795	2.2%

MOST TRADED IN THE YEAR 2008 BY TRADES

Name	TIDM	ISIN	Trades	% Total
1 ISHARES FTSE 100	ISF	IE0005042456	45,285	12.3%
2 LYXOR GOLD	GBS	GB00B00FHZ82	17,013	4.6%
3 ETFs AGRICULTURE DJ-AIGCI	AIGA	GB00B15KYH63	15,042	4.1%
4 ETFs PHYSICAL GOLD	PHAU	JE00B1VS3770	12,168	3.3%
5 MSCI BRAZIL	IBZL	IE00B0M63516	10,928	3.0%
6 ETFs PHYSICAL SILVER	PHAG	JE00B1VS3333	10,873	3.0%
7 ISHARES FTSE 250	MIDD	IE00B00FV128	9,480	2.6%
8 ISHARES S&P 500	IUSA	IE0031442068	9,144	2.5%
9 ISHARES FTSE UK DIVIDEND PLUS	IUKD	IE00B0M63060	8,947	2.4%
10 ETFs PHYSICAL PLATINUM	PHPT	JE00B1VS2W53	8,804	2.4%

