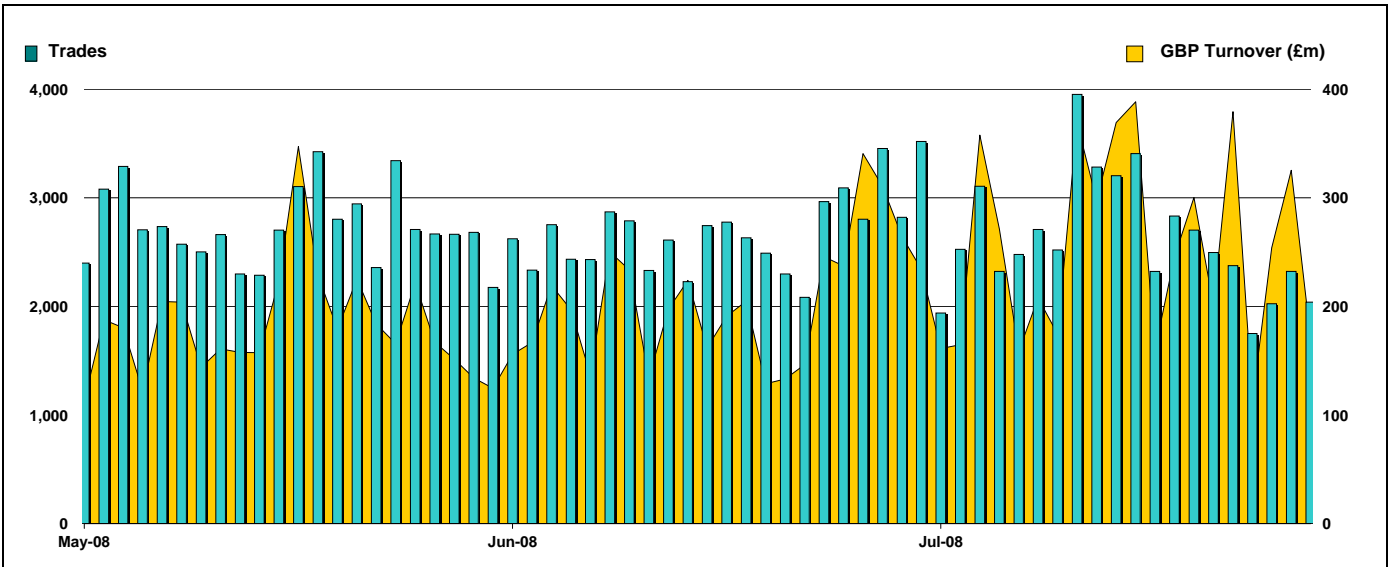


Exchange Traded Funds and Exchange Traded Commodities

Monthly statistics - July 2008

DAILY TRADING



MAIN INDICATORS

	LISTED INSTRUMENTS		TRADING					
	LISTED END of MONTH	MONTH NEW LISTED	June-08		July-08		2008 YTD	
			Trades	GBP Turnover	Trades	GBP Turnover	Trades	GBP Turnover
ETF - DEVELOPED MARKET	65	-	15,818	1,491,782,616	18,831	2,040,546,851	124,683	11,628,623,694
ETF - BONDS	12	-	2,088	170,592,464	2,949	285,353,618	14,912	1,745,587,267
ETF - EMERGING MARKETS	39	-	7,564	315,978,283	7,270	330,496,756	57,994	2,359,115,342
ETF - STYLE	4	-	23	136,671	15	160,937	178	7,084,952
OTHERS	27	5	1,994	95,814,797	1,910	178,513,363	14,813	681,039,486
ETC	122	-	26,663	1,890,072,059	31,143	3,043,602,871	216,304	12,790,602,634
TOTAL	269	5	54,150	3,964,376,890	62,118	5,878,674,396	428,884	29,212,053,375

MOST TRADED IN THE MONTH BY TURNOVER

Name	TIDM	ISIN	GBP Turnover	% Total
1 SHORT CRUDE OIL	SOIL	JE00B24DK975	868,665,174	21.9%
2 ISHARES FTSE 100	ISF	IE0005042456	794,884,622	20.1%
3 ETFs PHYSICAL GOLD	PHAU	JE00B1VS3770	653,104,147	16.5%
4 LYXOR GOLD	GBS	GB00B00FHZ82	495,865,744	12.5%
5 DJ EURO STOXX 50 ETF '1D'	XESX	LU0274211217	186,351,205	4.7%
6 ETFs PHYSICAL PLATINUM	PHPT	JE00B1VS2W53	158,492,318	4.0%
7 ISHARES S&P 500	IUSA	IE0031442068	156,201,441	3.9%
8 ETFs BRENT OIL	OILB	GB00B0CTWC01	128,857,896	3.3%
9 ISHARES FTSE ALL STOCKS GILT SHS	IIGLT	IE00B1FZSB30	123,050,436	3.1%
10 ISHARES FTSE 250	MIDD	IE00B00FV128	103,474,973	2.6%

MOST TRADED IN THE MONTH BY TRADES

Name	TIDM	ISIN	Trades	% Total
1 ISHARES FTSE 100	ISF	IE0005042456	7,318	13.5%
2 LYXOR GOLD	GBS	GB00B00FHZ82	3,444	6.4%
3 ETFs PHYSICAL GOLD	PHAU	JE00B1VS3770	2,666	4.9%
4 SHORT CRUDE OIL	SOIL	JE00B24DK975	1,970	3.6%
5 ETFs BRENT OIL	OILB	GB00B0CTWC01	1,825	3.4%
6 ISHARES S&P 500	IUSA	IE0031442068	1,824	3.4%
7 ETFs PHYSICAL SILVER	PHAG	JE00B1VS3333	1,658	3.1%
8 ETFs AGRICULTURE DJ-AIGCI	AIGA	GB00B15KYH63	1,529	2.8%
9 ISHARES FTSE UK DIVIDEND PLUS	IUKD	IE00B0M63060	1,438	2.7%
10 ETFs GOLD	BULL	GB00B15KXX56	1,394	2.6%

MOST TRADED IN THE YEAR 2008 BY TURNOVER

Name	TIDM	ISIN	GBP Turnover	% Total
1 ISHARES FTSE 100	ISF	IE0005042456	5,775,952,784	24.8%
2 LYXOR GOLD	GBS	GB00B00FHZ82	2,466,286,649	10.6%
3 ETFs PHYSICAL GOLD	PHAU	JE00B1VS3770	2,280,023,313	9.8%
4 SHORT CRUDE OIL	SOIL	JE00B24DK975	1,476,776,151	6.3%
5 ISHARES S&P 500	IUSA	IE0031442068	826,567,296	3.5%
6 ISHARES GBP CORPORATE BOND	SLXX	IE00B00FV011	802,873,942	3.4%
7 ETFs AGRICULTURE DJ-AIGCI	AIGA	GB00B15KYH63	753,336,592	3.2%
8 ISHARES FTSE 250	MIDD	IE00B00FV128	739,233,503	3.2%
9 ISHARES DJ EURO STOXX 50	EUE	IE0008471009	718,098,494	3.1%
10 ETFs PHYSICAL PLATINUM	PHPT	JE00B1VS2W53	672,962,113	2.9%

MOST TRADED IN THE YEAR 2008 BY TRADES

Name	TIDM	ISIN	Trades	% Total
1 ISHARES FTSE 100	ISF	IE0005042456	52,603	14.3%
2 LYXOR GOLD	GBS	GB00B00FHZ82	20,457	5.6%
3 ETFs AGRICULTURE DJ-AIGCI	AIGA	GB00B15KYH63	16,571	4.5%
4 ETFs PHYSICAL GOLD	PHAU	JE00B1VS3770	14,834	4.0%
5 ETFs PHYSICAL SILVER	PHAG	JE00B1VS3333	12,531	3.4%
6 MSCI BRAZIL	IBZL	IE00B0M63516	12,059	3.3%
7 ISHARES S&P 500	IUSA	IE0031442068	10,968	3.0%
8 ISHARES FTSE 250	MIDD	IE00B00FV128	10,827	3.0%
9 ISHARES FTSE UK DIVIDEND PLUS	IUKD	IE00B0M63060	10,385	2.8%
10 ETFs PHYSICAL PLATINUM	PHPT	JE00B1VS2W53	9,614	2.6%

