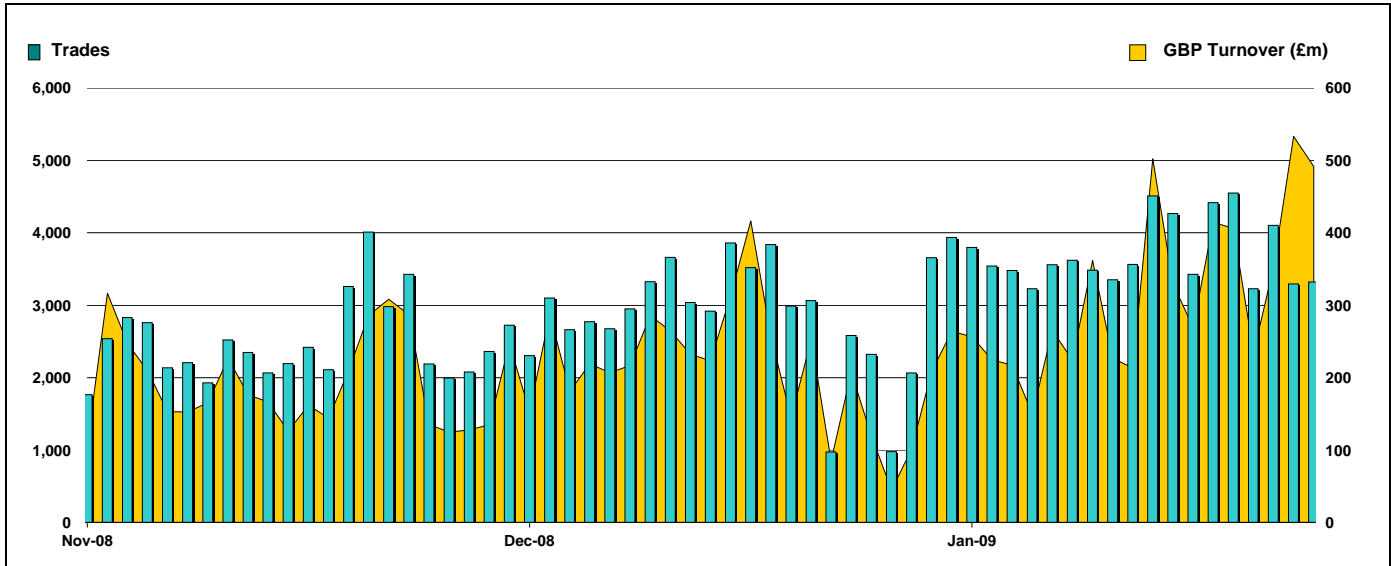


Exchange Traded Funds and Exchange Traded Commodities

Monthly statistics - January 2009

DAILY TRADING



MAIN INDICATORS

	LISTED INSTRUMENTS		TRADING					
	LISTED END OF MONTH	MONTH NEW LISTED	December-08		January-09		2009 YTD	
			Trades	GBP Turnover	Trades	GBP Turnover	Trades	GBP Turnover
ETF - DEVELOPED MARKET	70	-	28,514	2,354,721,474	34,090	2,399,582,149	34,090	2,399,582,149
ETF - BONDS	14	-	8,070	608,617,688	9,777	1,227,390,096	9,777	1,227,390,096
ETF - EMERGING MARKETS	39	-	5,015	346,109,650	4,389	277,758,887	4,389	277,758,887
ETF - STYLE	5	-	20	2,023,711	34	18,811,744	34	18,811,744
OTHERS	54	-	1,040	104,861,441	1,484	114,872,630	1,484	114,872,630
ETC	123	-	15,952	1,074,944,264	26,616	2,207,522,649	26,616	2,207,522,649
TOTAL	305	-	58,611	4,491,278,229	76,390	6,245,938,155	76,390	6,245,938,155

MOST TRADED IN THE MONTH BY TURNOVER

Name	TIDM	ISIN	GBP Turnover	% Total
1 ISHARES FTSE 100	ISF	IE0005042456	1,132,787,305	18.1%
2 GOLD BULLION SECURITIES	GBS	GB00B00FHZ82	754,595,217	12.1%
3 ETFs PHYSICAL GOLD	PHAU	JE00B1VS3770	608,821,858	9.7%
4 ISHARES GBP CORPORATE BOND	SLXX	IE00B00FV011	304,670,852	4.9%
5 ISHARES # IDX LKD GILT	INXG	IE00B1FZSD53	247,007,447	4.0%
6 ISHARES DJ EURO STOXX 50	EUE	IE0008471009	238,357,532	3.8%
7 ETFs CRUDE OIL	CRUD	GB00B15KXV33	188,674,184	3.0%
8 ISHARES S&P 500	IUSA	IE0031442068	188,172,219	3.0%
9 ISHARES \$ TIPS	IDTP	IE00B1FZSC47	168,068,062	2.7%
10 ETFs LEVERAGED CRUDE OIL	LOIL	JE00B2NFTJ73	163,836,513	2.6%

MOST TRADED IN THE MONTH BY TRADES

Name	TIDM	ISIN	Trades	% Total
1 ISHARES FTSE 100	ISF	IE0005042456	20,197	26.4%
2 GOLD BULLION SECURITIES	GBS	GB00B00FHZ82	5,698	7.5%
3 ETFs LEVERAGED CRUDE OIL	LOIL	JE00B2NFTJ73	5,463	7.2%
4 ISHARES GBP CORPORATE BOND	SLXX	IE00B00FV011	5,022	6.6%
5 ISHARES S&P 500	IUSA	IE0031442068	3,083	4.0%
6 ETFs CRUDE OIL	CRUD	GB00B15KXV33	3,078	4.0%
7 ETFs PHYSICAL GOLD	PHAU	JE00B1VS3770	2,382	3.1%
8 ETFs BRENT OIL	OILB	GB00B0CTWC01	2,363	3.1%
9 ISHARES FTSE UK ALL STKS GILT	IGLT	IE00B1FZSB30	1,545	2.0%
10 ISHARES FTSE 250	MIDD	IE00B00FV128	1,162	1.5%

MOST TRADED IN THE YEAR 2009 BY TURNOVER

Name	TIDM	ISIN	GBP Turnover	% Total
1 ISHARES FTSE 100	ISF	IE0005042456	1,132,787,305	18.1%
2 GOLD BULLION SECURITIES	GBS	GB00B00FHZ82	754,595,217	12.1%
3 ETFs PHYSICAL GOLD	PHAU	JE00B1VS3770	608,821,858	9.7%
4 ISHARES GBP CORPORATE BOND	SLXX	IE00B00FV011	304,670,852	4.9%
5 ISHARES # IDX LKD GILT	INXG	IE00B1FZSD53	247,007,447	4.0%
6 ISHARES DJ EURO STOXX 50	EUE	IE0008471009	238,357,532	3.8%
7 ETFs CRUDE OIL	CRUD	GB00B15KXV33	188,674,184	3.0%
8 ISHARES S&P 500	IUSA	IE0031442068	188,172,219	3.0%
9 ISHARES \$ TIPS	IDTP	IE00B1FZSC47	168,068,062	2.7%
10 ETFs LEVERAGED CRUDE OIL	LOIL	JE00B2NFTJ73	163,836,513	2.6%

MOST TRADED IN THE YEAR 2009 BY TRADES

Name	TIDM	ISIN	Trades	% Total
1 ISHARES FTSE 100	ISF	IE0005042456	20,197	26.4%
2 GOLD BULLION SECURITIES	GBS	GB00B00FHZ82	5,698	7.5%
3 ETFs LEVERAGED CRUDE OIL	LOIL	JE00B2NFTJ73	5,463	7.2%
4 ISHARES GBP CORPORATE BOND	SLXX	IE00B00FV011	5,022	6.6%
5 ISHARES S&P 500	IUSA	IE0031442068	3,083	4.0%
6 ETFs CRUDE OIL	CRUD	GB00B15KXV33	3,078	4.0%
7 ETFs PHYSICAL GOLD	PHAU	JE00B1VS3770	2,382	3.1%
8 ETFs BRENT OIL	OILB	GB00B0CTWC01	2,363	3.1%
9 ISHARES FTSE UK ALL STKS GILT	IGLT	IE00B1FZSB30	1,545	2.0%
10 ISHARES FTSE 250	MIDD	IE00B00FV128	1,162	1.5%

www.londonstockexchange.com/etfstats

Copyright © January 2009 London Stock Exchange plc. Registered in England and Wales No. 2075721. London Stock Exchange plc has used all reasonable efforts to ensure that the information contained in this publication is correct at the time of going to press, but shall not be liable for decisions made in reliance on it. London Stock Exchange and the coat of arms device are registered trademarks of London Stock Exchange plc.