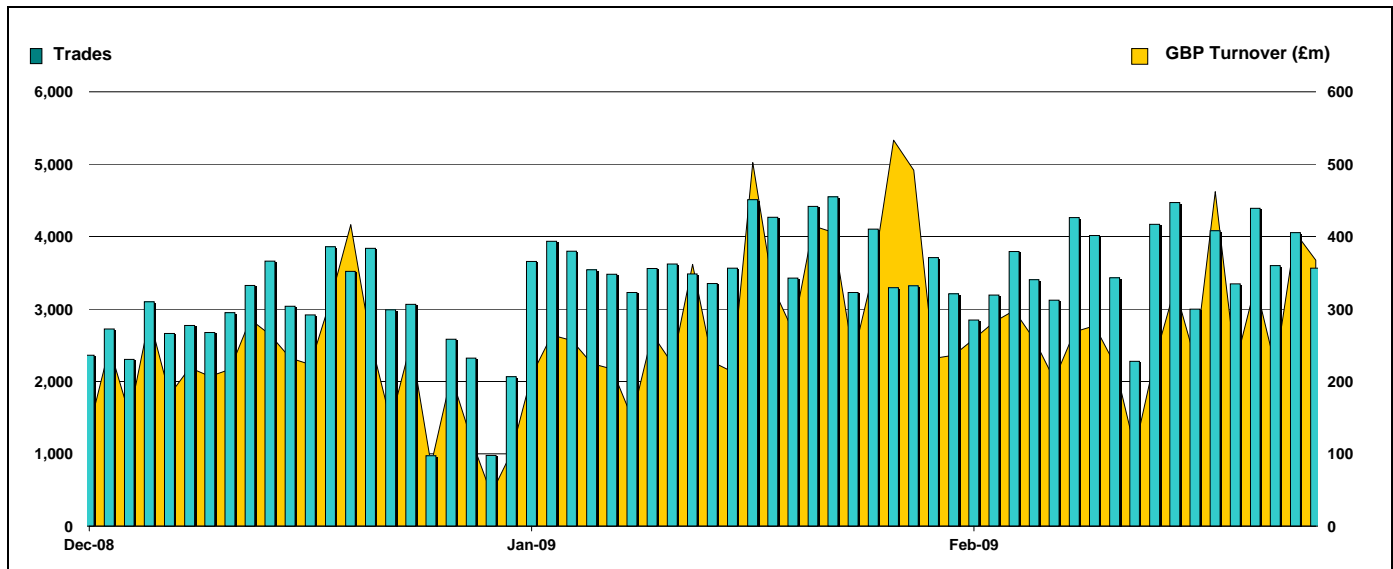


## Exchange Traded Funds and Exchange Traded Commodities

Monthly statistics - February 2009

### DAILY TRADING



### MAIN INDICATORS

	LISTED INSTRUMENTS		January-09		February-09		2009 YTD	
	LISTED END OF MONTH	MONTH NEW LISTED	Trades	GBP Turnover	Trades	GBP Turnover	Trades	GBP Turnover
ETF - DEVELOPED MARKET	75	5	34,090	2,399,582,149	30,604	2,494,047,177	64,694	4,893,629,326
ETF - BONDS	14	-	9,777	1,227,390,096	7,012	612,461,266	16,789	1,839,851,362
ETF - EMERGING MARKETS	39	-	4,389	277,758,887	5,123	316,262,391	9,512	594,021,279
ETF - STYLE	5	-	34	18,811,744	18	615,475	52	19,427,219
OTHERS	54	-	1,484	114,872,630	1,315	112,968,442	2,799	227,841,071
ETC	123	-	26,616	2,207,522,649	27,858	1,907,202,383	54,474	4,114,725,033
<b>TOTAL</b>	<b>310</b>	<b>5</b>	<b>76,390</b>	<b>6,245,938,155</b>	<b>71,930</b>	<b>5,443,557,135</b>	<b>148,320</b>	<b>11,689,495,290</b>

### MOST TRADED IN THE MONTH BY TURNOVER

Name	TIDM	ISIN	GBP Turnover	% Total
1 ISHARES FTSE 100	ISF	IE0005042456	968,133,716	17.8%
2 GOLD BULLION SECURITIES	GBS	GB00B00FHZ82	660,590,679	12.1%
3 ETFs PHYSICAL GOLD	PHAU	JE00B1VS3770	429,582,125	7.9%
4 LYXOR ETF FTSE 100	L100	FR0010438127	236,025,681	4.3%
5 S&P 500	IDUS	IE0031442068	190,014,265	3.5%
6 ISHARES S&P 500	IUSA	IE0031442068	161,236,313	3.0%
7 ISHARES GBP CORPORATE BOND	SLXX	IE00B00FV011	153,916,687	2.8%
8 ETFs LEVERAGED CRUDE OIL	LOIL	JE00B2NFTJ73	139,713,461	2.6%
9 ETFs CRUDE OIL	CRUD	GB00B15KXV33	137,352,426	2.5%
10 ISHARES MSCI JAPAN	IJPN	IE00B02KXH56	117,147,981	2.2%

### MOST TRADED IN THE MONTH BY TRADES

Name	TIDM	ISIN	Trades	% Total
1 ISHARES FTSE 100	ISF	IE0005042456	16,442	22.9%
2 GOLD BULLION SECURITIES	GBS	GB00B00FHZ82	5,422	7.5%
3 ETFs LEVERAGED CRUDE OIL	LOIL	JE00B2NFTJ73	5,304	7.4%
4 ISHARES GBP CORPORATE BOND	SLXX	IE00B00FV011	3,392	4.7%
5 ETFs CRUDE OIL	CRUD	GB00B15KXV33	3,109	4.3%
6 ETFs PHYSICAL GOLD	PHAU	JE00B1VS3770	3,002	4.2%
7 ISHARES S&P 500	IUSA	IE0031442068	2,974	4.1%
8 ETFs BRENT OIL	OILB	GB00B0CTWC01	2,036	2.8%
9 ISHARES MSCI EMERGING MARKET	IEMM	IE00B0M63177	1,258	1.7%
10 ISHARES FTSE UK DIVIDEND PLUS	IUKD	IE00B0M63060	1,236	1.7%

### MOST TRADED IN THE YEAR 2009 BY TURNOVER

Name	TIDM	ISIN	GBP Turnover	% Total
1 ISHARES FTSE 100	ISF	IE0005042456	2,100,921,022	18.0%
2 GOLD BULLION SECURITIES	GBS	GB00B00FHZ82	1,415,185,896	12.1%
3 ETFs PHYSICAL GOLD	PHAU	JE00B1VS3770	1,038,403,984	8.9%
4 ISHARES GBP CORPORATE BOND	SLXX	IE00B00FV011	458,587,539	3.9%
5 ISHARES S&P 500	IUSA	IE0031442068	349,408,532	3.0%
6 ISHARES DJ EURO STOXX 50	EUE	IE0008471009	345,994,743	3.0%
7 S&P 500	IDUS	IE0031442068	326,028,454	2.8%
8 ETFs CRUDE OIL	CRUD	GB00B15KXV33	326,026,609	2.8%
9 ISHARES # IDX LKD GILT	INXG	IE00B1FZSD53	317,587,211	2.7%
10 ETFs LEVERAGED CRUDE OIL	LOIL	JE00B2NFTJ73	303,549,973	2.6%

### MOST TRADED IN THE YEAR 2009 BY TRADES

Name	TIDM	ISIN	Trades	% Total
1 ISHARES FTSE 100	ISF	IE0005042456	36,639	24.7%
2 GOLD BULLION SECURITIES	GBS	GB00B00FHZ82	11,120	7.5%
3 ETFs LEVERAGED CRUDE OIL	LOIL	JE00B2NFTJ73	10,767	7.3%
4 ISHARES GBP CORPORATE BOND	SLXX	IE00B00FV011	8,414	5.7%
5 ETFs CRUDE OIL	CRUD	GB00B15KXV33	6,187	4.2%
6 ISHARES S&P 500	IUSA	IE0031442068	6,057	4.1%
7 ETFs PHYSICAL GOLD	PHAU	JE00B1VS3770	5,384	3.6%
8 ETFs BRENT OIL	OILB	GB00B0CTWC01	4,399	3.0%
9 ISHARES FTSE UK ALL STKS GILT	IGLT	IE00B1FZSB30	2,632	1.8%
10 ISHARES FTSE UK DIVIDEND PLUS	IUKD	IE00B0M63060	2,375	1.6%

[www.londonstockexchange.com/etfstats](http://www.londonstockexchange.com/etfstats)

Copyright © February 2009 London Stock Exchange plc. Registered in England and Wales No. 2075721. London Stock Exchange plc has used all reasonable efforts to ensure that the information contained in this publication is correct at the time of going to press, but shall not be liable for decisions made in reliance on it. London Stock Exchange and the coat of arms device are registered trademarks of London Stock Exchange plc.

