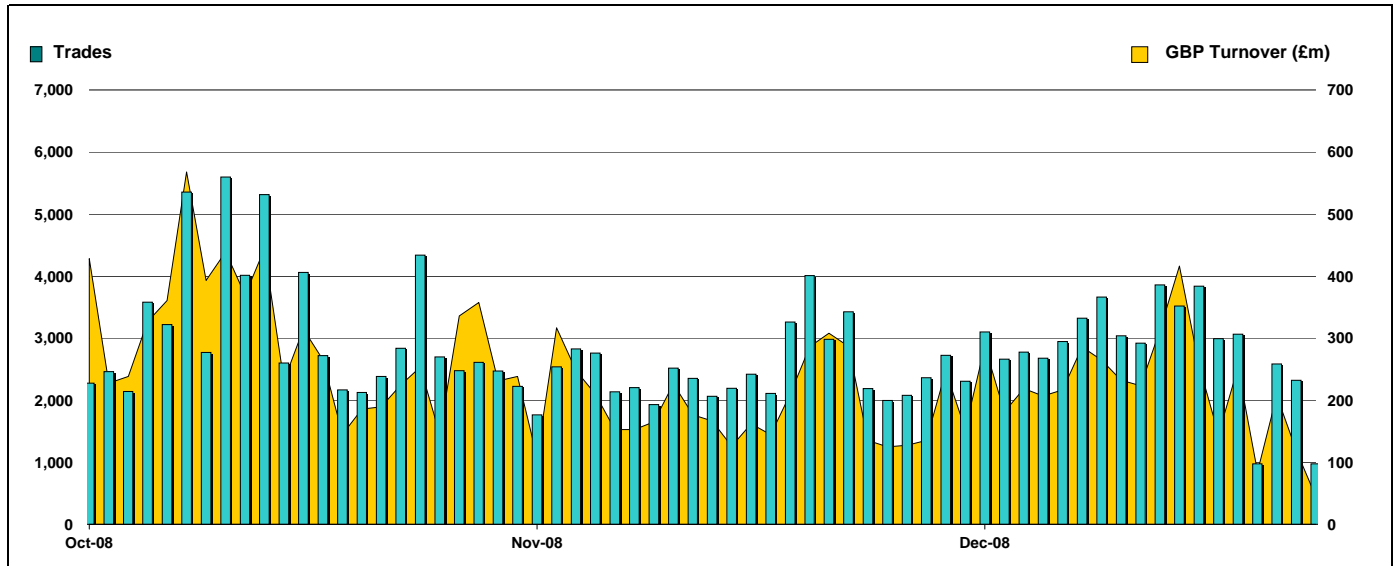


## Exchange Traded Funds and Exchange Traded Commodities

Monthly statistics - December 2008

### DAILY TRADING



### MAIN INDICATORS

	LISTED INSTRUMENTS		TRADING					
	LISTED END OF MONTH	MONTH NEW LISTED	November-08		December-08		2008 YTD	
			Trades	GBP Turnover	Trades	GBP Turnover	Trades	GBP Turnover
ETF - DEVELOPED MARKET	70	-	27,519	2,156,945,522	28,514	2,354,721,474	264,514	25,144,346,203
ETF - BONDS	14	-	5,561	586,429,528	8,070	608,617,688	40,113	4,165,074,966
ETF - EMERGING MARKETS	39	-	4,733	253,921,414	5,015	346,109,650	84,587	4,040,506,398
ETF - STYLE	5	-	38	1,136,962	20	2,023,711	365	63,930,397
OTHERS	54	-	983	70,817,270	1,040	104,861,441	22,326	1,245,715,934
ETC	123	-	10,916	762,846,710	15,952	1,074,944,264	307,384	20,232,688,503
<b>TOTAL</b>	<b>305</b>	<b>-</b>	<b>49,750</b>	<b>3,832,097,407</b>	<b>58,611</b>	<b>4,491,278,229</b>	<b>719,289</b>	<b>54,892,262,402</b>

### MOST TRADED IN THE MONTH BY TURNOVER

Name	TIDM	ISIN	GBP Turnover	% Total
1 ISHARES FTSE 100	ISF	IE0005042456	918,888,518	20.5%
2 LYXOR GOLD	GBS	GB00B00FHZ82	416,312,554	9.3%
3 ETFs PHYSICAL GOLD	PHAU	JE00B1VS3770	275,460,814	6.1%
4 ISHARES GBP CORPORATE BOND	SLXX	IE00B00FV011	225,672,853	5.0%
5 ISHARES DJ EURO STOXX 50	EUE	IE0008471009	209,506,286	4.7%
6 ISHARES S&P 500	IUSA	IE0031442068	155,906,084	3.5%
7 ISHARES MSCI JAPAN	IJPN	IE00B02KXH56	148,302,610	3.3%
8 ISHARES FTSE UK ALL STKS GILT	IGLT	IE00B1FZSB30	148,009,009	3.3%
9 S&P 500	IDUS	IE0031442068	143,754,756	3.2%
10 ISHARES MSCI EUROPE EX-UK	IEUX	IE00B14X4N27	114,126,428	2.5%

### MOST TRADED IN THE MONTH BY TRADES

Name	TIDM	ISIN	Trades	% Total
1 ISHARES FTSE 100	ISF	IE0005042456	15,875	27.1%
2 ISHARES GBP CORPORATE BOND	SLXX	IE00B00FV011	3,911	6.7%
3 LYXOR GOLD	GBS	GB00B00FHZ82	3,361	5.7%
4 ISHARES S&P 500	IUSA	IE0031442068	3,354	5.7%
5 ETFs LEVERAGED CRUDE OIL	LOIL	JE00B2NFTJ73	1,917	3.3%
6 ETFs BRENT OIL	OILB	GB00B0CTWC01	1,815	3.1%
7 ETFs PHYSICAL GOLD	PHAU	JE00B1VS3770	1,682	2.9%
8 ETFs CRUDE OIL	CRUD	GB00B15KYH63	1,679	2.9%
9 ISHARES FTSE UK ALL STKS GILT	IGLT	IE00B1FZSB30	1,631	2.8%
10 ISHARES FTSE 250	MIDD	IE00B00FV128	910	1.6%

### MOST TRADED IN THE YEAR 2008 BY TURNOVER

Name	TIDM	ISIN	GBP Turnover	% Total
1 ISHARES FTSE 100	ISF	IE0005042456	11,344,127,454	20.7%
2 LYXOR GOLD	GBS	GB00B00FHZ82	4,350,657,262	7.9%
3 ETFs PHYSICAL GOLD	PHAU	JE00B1VS3770	3,645,238,067	6.6%
4 ETFs SHORT CRUDE OIL	SOIL	JE00B24DK975	2,892,497,028	5.3%
5 ISHARES S&P 500	IUSA	IE0031442068	1,979,301,418	3.6%
6 ISHARES DJ EURO STOXX 50	EUE	IE0008471009	1,925,053,287	3.5%
7 ISHARES GBP CORPORATE BOND	SLXX	IE00B00FV011	1,345,505,571	2.5%
8 ISHARES FTSE 250	MIDD	IE00B00FV128	993,324,921	1.8%
9 ETFs AGRICULTURE DJ-AIGCI	AIGA	GB00B15KYH63	980,402,138	1.8%
10 ISHARES FTSE UK ALL STKS GILT	IGLT	IE00B1FZSB30	880,351,570	1.6%

### MOST TRADED IN THE YEAR 2008 BY TRADES

Name	TIDM	ISIN	Trades	% Total
1 ISHARES FTSE 100	ISF	IE0005042456	125,695	17.5%
2 LYXOR GOLD	GBS	GB00B00FHZ82	37,183	5.2%
3 ISHARES S&P 500	IUSA	IE0031442068	25,487	3.5%
4 ETFs PHYSICAL GOLD	PHAU	JE00B1VS3770	24,083	3.3%
5 ETFs AGRICULTURE DJ-AIGCI	AIGA	GB00B15KYH63	19,863	2.8%
6 ETFs PHYSICAL SILVER	PHAG	JE00B1VS3333	16,805	2.3%
7 ISHARES FTSE UK DIVIDEND PLUS	IUKD	IE00B0M63060	16,686	2.3%
8 ISHARES FTSE 250	MIDD	IE00B00FV128	16,467	2.3%
9 ISHARES GBP CORPORATE BOND	SLXX	IE00B00FV011	15,567	2.2%
10 ISHARES MSCI BRAZIL	IBZL	IE00B0M63516	14,481	2.0%

[www.londonstockexchange.com/etfstats](http://www.londonstockexchange.com/etfstats)

Copyright © December 2008 London Stock Exchange plc. Registered in England and Wales No. 2075721. London Stock Exchange plc has used all reasonable efforts to ensure that the information contained in this publication is correct at the time of going to press, but shall not be liable for decisions made in reliance on it. London Stock Exchange and the coat of arms device are registered trademarks of London Stock Exchange plc.