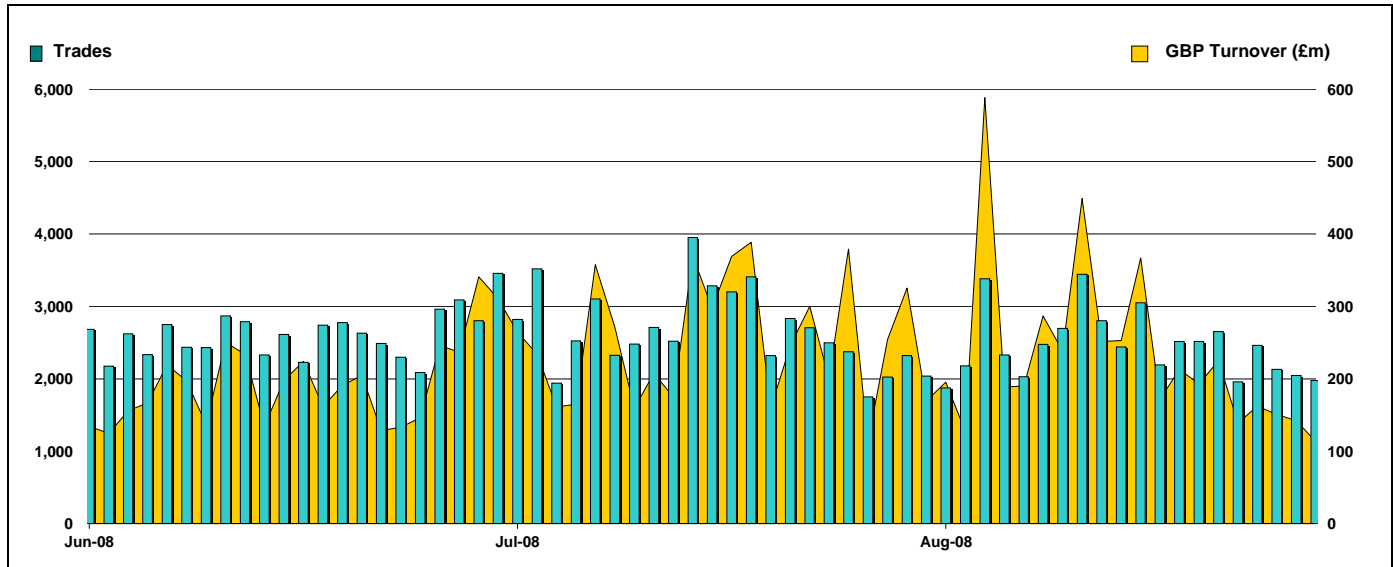


Exchange Traded Funds and Exchange Traded Commodities

Monthly statistics - August 2008

DAILY TRADING



MAIN INDICATORS

	LISTED INSTRUMENTS		TRADING					
	LISTED END of MONTH	MONTH NEW LISTED	Trades	July-08 GBP Turnover	Trades	August-08 GBP Turnover	Trades	2008 YTD GBP Turnover
ETF - DEVELOPED MARKET	67	2	18,831	2,040,546,851	13,754	1,455,883,733	138,437	13,084,507,427
ETF - BONDS	14	2	2,949	285,353,618	2,709	247,266,024	17,621	1,992,853,292
ETF - EMERGING MARKETS	39	-	7,270	330,496,756	4,804	242,103,063	62,798	2,601,218,405
ETF - STYLE	5	1	15	160,937	31	6,112,059	209	13,197,012
OTHERS	41	14	1,910	178,513,363	1,661	75,413,295	16,474	756,452,781
ETC	122	-	31,143	3,043,602,871	26,204	2,618,888,465	242,508	15,409,491,099
TOTAL	288	19	62,118	5,878,674,396	49,163	4,645,666,640	478,047	33,857,720,016

MOST TRADED IN THE MONTH BY TURNOVER

Name	TIDM	ISIN	GBP Turnover	% Total
1 ETFs SHORT CRUDE OIL	SOIL	JE00B24DK975	1,021,585,165	22.0%
2 ISHARES FTSE 100	ISF	IE0005042456	561,304,934	12.1%
3 ETFs PHYSICAL GOLD	PHAU	JE00B1VS3770	519,577,806	11.2%
4 LYXOR GOLD	GBS	GB00B00FHZ82	275,406,372	5.9%
5 ISHARES S&P 500	IUSA	IE0031442068	187,004,043	4.0%
6 MSCI WORLD	IDWR	IE00B0M62Q58	93,189,884	2.0%
7 S&P 500	IDUS	IE0031442068	81,290,288	1.7%
8 ISHARES GBP CORPORATE BOND	SLXX	IE00B00FV011	77,505,581	1.7%
9 ISHARES MSCI WORLD	IWRD	IE00B0M62Q58	55,220,707	1.2%
10 ISHARES FTSE 250	MIDD	IE00B00FV128	53,478,917	1.2%

MOST TRADED IN THE MONTH BY TRADES

Name	TIDM	ISIN	Trades	% Total
1 ISHARES FTSE 100	ISF	IE0005042456	4,568	9.3%
2 LYXOR GOLD	GBS	GB00B00FHZ82	2,860	5.8%
3 ETFs PHYSICAL GOLD	PHAU	JE00B1VS3770	2,325	4.7%
4 ETFs SHORT CRUDE OIL	SOIL	JE00B24DK975	2,024	4.1%
5 ISHARES S&P 500	IUSA	IE0031442068	1,829	3.7%
6 ETFs PHYSICAL SILVER	PHAG	JE00B1VS3333	1,811	3.7%
7 ETFs AGRICULTURE DJ-AIGCI	AIGA	GB00B15KYH63	1,004	2.0%
8 ISHARES FTSE UK DIVIDEND PLUS	IUKD	IE00B0M63060	978	2.0%
9 ISHARES GBP CORPORATE BOND	SLXX	IE00B00FV011	970	2.0%
10 ISHARES FTSE UK ALL STKS GILT	IGLT	IE00B1FZSB30	827	1.7%

MOST TRADED IN THE YEAR 2008 BY TURNOVER

Name	TIDM	ISIN	GBP Turnover	% Total
1 ISHARES FTSE 100	ISF	IE0005042456	6,337,257,718	18.7%
2 ETFs PHYSICAL GOLD	PHAU	JE00B1VS3770	2,799,601,119	8.3%
3 LYXOR GOLD	GBS	GB00B00FHZ82	2,741,693,021	8.1%
4 ETFs SHORT CRUDE OIL	SOIL	JE00B24DK975	2,498,361,316	7.4%
5 ISHARES S&P 500	IUSA	IE0031442068	1,013,571,339	3.0%
6 ISHARES GBP CORPORATE BOND	SLXX	IE00B00FV011	890,379,523	2.6%
7 ETFs AGRICULTURE DJ-AIGCI	AIGA	GB00B15KYH63	796,275,417	2.4%
8 ISHARES FTSE 250	MIDD	IE00B00FV128	792,712,420	2.3%
9 ISHARES DJ EURO STOXX 50	EUE	IE0008471009	757,178,208	2.2%
10 ETFs PHYSICAL PLATINUM	PHPT	JE00B1VS2W53	726,014,679	2.1%

MOST TRADED IN THE YEAR 2008 BY TRADES

Name	TIDM	ISIN	Trades	% Total
1 ISHARES FTSE 100	ISF	IE0005042456	57,171	12.0%
2 LYXOR GOLD	GBS	GB00B00FHZ82	23,317	4.9%
3 ETFs AGRICULTURE DJ-AIGCI	AIGA	GB00B15KYH63	17,575	3.7%
4 ETFs PHYSICAL GOLD	PHAU	JE00B1VS3770	17,159	3.6%
5 ETFs PHYSICAL SILVER	PHAG	JE00B1VS3333	14,342	3.0%
6 ISHARES S&P 500	IUSA	IE0031442068	12,797	2.7%
7 ISHARES MSCI BRAZIL	IBZL	IE00B0M63516	12,673	2.7%
8 ISHARES FTSE 250	MIDD	IE00B00FV128	11,639	2.4%
9 ISHARES FTSE UK DIVIDEND PLUS	IUKD	IE00B0M63060	11,363	2.4%
10 ETFs PHYSICAL PLATINUM	PHPT	JE00B1VS2W53	10,360	2.2%

