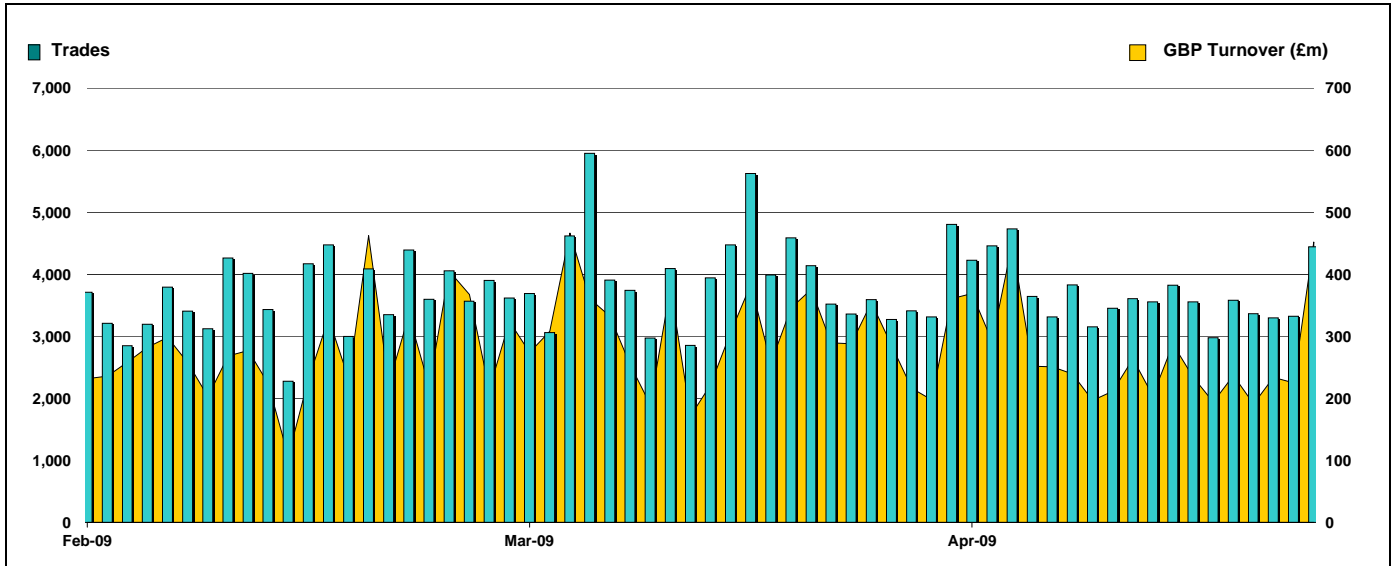


Exchange Traded Funds and Exchange Traded Products

Monthly statistics - April 2009

DAILY TRADING



MAIN INDICATORS

	LISTED INSTRUMENTS		TRADING					
	LISTED END OF MONTH	MONTH NEW LISTED	March-09		April-09		2009 YTD	
			Trades	GBP Turnover	Trades	GBP Turnover	Trades	GBP Turnover
ETF - DEVELOPED MARKET	78	3	44,859	3,113,124,587	33,506	2,513,715,646	143,059	10,520,469,560
ETF - BONDS	21	4	7,724	857,826,912	7,762	589,276,393	32,275	3,286,954,667
ETF - EMERGING MARKETS	41	-	6,097	514,856,938	7,877	601,636,198	23,486	1,710,514,414
ETF - STYLE	7	-	90	7,943,966	91	7,990,438	408	56,723,945
OTHERS	53	-	1,638	103,302,070	2,443	217,954,572	6,705	527,735,391
ETC	123	-	25,861	1,995,260,488	22,688	1,400,613,365	103,023	7,510,598,885
ETN	1	-	7	2,938,689	61	9,199,029	68	12,137,718
TOTAL	324	7	86,276	6,595,253,649	74,428	5,340,385,641	309,024	23,625,134,580

MOST TRADED IN THE MONTH BY TURNOVER

Name	TIDM	ISIN	GBP Turnover	% Total
1 ISHARES FTSE 100	ISF	IE0005042456	1,089,230,810	20.4%
2 GOLD BULLION SECURITIES	GBS	GB00B00FHZ82	464,594,721	8.7%
3 ETFs PHYSICAL GOLD	PHAU	JE00B1VS3770	228,871,544	4.3%
4 ISHARES S&P 500	IUSA	IE0031442068	208,564,788	3.9%
5 ISHARES # IDX LKD GILT	INXG	IE00B1FZSD53	175,531,760	3.3%
6 ISHARES GBP CORPORATE BOND	SLXX	IE00B00FV011	134,912,549	2.5%
7 ISHARES DJ EURO STOXX 50	EUE	IE0008471009	130,539,814	2.4%
8 ISHARES MSCI WORLD	IWRD	IE00B0M62Q58	110,487,017	2.1%
9 S&P 500	IDUS	IE0031442068	110,174,875	2.1%
10 ISHARES FTSE 250	MIDD	IE00B00FV128	98,904,591	1.9%

MOST TRADED IN THE MONTH BY TRADES

Name	TIDM	ISIN	Trades	% Total
1 ISHARES FTSE 100	ISF	IE0005042456	17,661	23.7%
2 ISHARES S&P 500	IUSA	IE0031442068	4,413	5.9%
3 GOLD BULLION SECURITIES	GBS	GB00B00FHZ82	4,125	5.5%
4 ETFs LEVERAGED CRUDE OIL	LOIL	JE00B2NFTJ73	3,272	4.4%
5 ISHARES GBP CORPORATE BOND	SLXX	IE00B00FV011	3,193	4.3%
6 ETFs PHYSICAL GOLD	PHAU	JE00B1VS3770	2,581	3.5%
7 ETFs CRUDE OIL	CRUD	GB00B15KXV33	1,669	2.2%
8 ETFs BRENT OIL	OILB	GB00B0CTWC01	1,664	2.2%
9 ISHARES # IDX LKD GILT	INXG	IE00B1FZSD53	1,589	2.1%
10 ISHARES MSCI EMERGING MARKET	IEEM	IE00B0M63177	1,492	2.0%

MOST TRADED IN THE YEAR 2009 BY TURNOVER

Name	TIDM	ISIN	GBP Turnover	% Total
1 ISHARES FTSE 100	ISF	IE0005042456	4,752,805,023	20.1%
2 GOLD BULLION SECURITIES	GBS	GB00B00FHZ82	2,665,166,648	11.3%
3 ETFs PHYSICAL GOLD	PHAU	JE00B1VS3770	1,591,369,980	6.7%
4 ISHARES S&P 500	IUSA	IE0031442068	805,163,730	3.4%
5 ISHARES GBP CORPORATE BOND	SLXX	IE00B00FV011	771,911,665	3.3%
6 S&P 500	IDUS	IE0031442068	646,502,599	2.7%
7 ISHARES DJ EURO STOXX 50	EUE	IE0008471009	585,731,592	2.5%
8 ISHARES # IDX LKD GILT	INXG	IE00B1FZSD53	566,306,188	2.4%
9 ETFs CRUDE OIL	CRUD	GB00B15KXV33	535,447,248	2.3%
10 ETFs LEVERAGED CRUDE OIL	LOIL	JE00B2NFTJ73	509,484,448	2.2%

MOST TRADED IN THE YEAR 2009 BY TRADES

Name	TIDM	ISIN	Trades	% Total
1 ISHARES FTSE 100	ISF	IE0005042456	77,786	25.2%
2 GOLD BULLION SECURITIES	GBS	GB00B00FHZ82	20,050	6.5%
3 ETFs LEVERAGED CRUDE OIL	LOIL	JE00B2NFTJ73	18,089	5.9%
4 ISHARES S&P 500	IUSA	IE0031442068	17,821	5.8%
5 ISHARES GBP CORPORATE BOND	SLXX	IE00B00FV011	15,091	4.9%
6 ETFs PHYSICAL GOLD	PHAU	JE00B1VS3770	10,757	3.5%
7 ETFs CRUDE OIL	CRUD	GB00B15KXV33	10,269	3.3%
8 ETFs BRENT OIL	OILB	GB00B0CTWC01	8,126	2.6%
9 ISHARES FTSE UK ALL STKS GILT	IGLT	IE00B1FZSB30	5,847	1.9%
10 ISHARES FTSE 250	MIDD	IE00B00FV128	4,756	1.5%

www.londonstockexchange.com/etfstats

Copyright © April 2009 London Stock Exchange plc. Registered in England and Wales No. 2075721. London Stock Exchange plc has used all reasonable efforts to ensure that the information contained in this publication is correct at the time of going to press, but shall not be liable for decisions made in reliance on it. London Stock Exchange and the coat of arms device are registered trademarks of London Stock Exchange plc.

