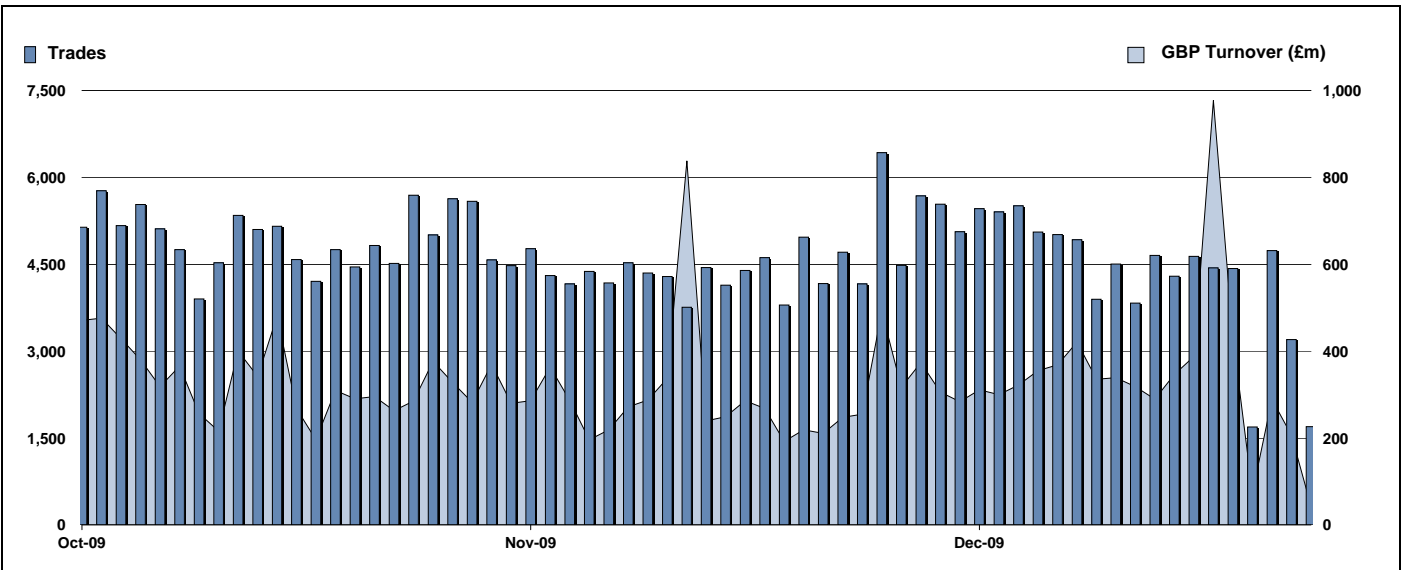


Exchange Traded Funds and Exchange Traded Products

Monthly statistics - December 2009



DAILY TRADING



MAIN INDICATORS

	LISTED INSTRUMENTS		TRADING					
	LISTED END OF MONTH	MONTH NEW LISTED	November-09		December-09		2009 YTD	
			Trades	GBP Turnover	Trades	GBP Turnover	Trades	GBP Turnover
ETF - DEVELOPED MARKET	90	-	33,925	2,277,082,309	32,504	3,381,393,608	412,428	30,311,163,274
ETF - BONDS	31	-	9,515	1,282,827,898	9,868	1,000,977,812	102,049	9,996,728,019
ETF - EMERGING MARKETS	37	-	10,218	656,106,868	8,778	644,068,812	90,592	7,146,343,527
ETF - STYLE	5	-	217	17,780,298	317	33,894,551	2,180	283,618,653
OTHERS	58	-	4,387	263,915,696	4,387	216,040,158	33,769	2,414,249,904
ETC	148	1	35,199	1,828,730,715	37,794	1,805,373,832	376,204	22,683,204,452
ETN	1	-	45	12,442,501	22	4,293,445	309	59,705,690
TOTAL	370	1	93,506	6,338,886,285	93,670	7,086,042,218	1,017,531	72,895,013,517

MOST TRADED IN THE MONTH BY TURNOVER

Name	TIDM	ISIN	GBP Turnover	% Total
1 ISHARES FTSE 100	ISF	IE0005042456	858,255,312	12.1%
2 ISHARES MSCI EUROPE EX-UK	IEUX	IE00B14X4N27	762,676,566	10.8%
3 ETFs PHYSICAL GOLD	PHAU	JE00B1VS3770	313,345,047	4.4%
4 GOLD BULLION SECURITIES	GBS	GB00B00FHZ82	277,995,863	3.9%
5 ETFs NATURAL GAS	NGAS	GB00B15KY104	195,858,672	2.8%
6 DB X-TRACKERS \$ MONEY MKT ETF CAUSD	LU0356591882		186,745,019	2.6%
7 ISHARES S&P 500	IUSA	IE0031442068	154,254,575	2.2%
8 ISHARES GBP CORPORATE BOND	SLXX	IE00B00FV011	147,925,800	2.1%
9 S&P 500	IDUS	IE0031442068	142,258,625	2.0%
10 ISHARES FTSE UK ALL STKS GILT	IGLT	IE00B1FZSB30	111,117,574	1.6%

MOST TRADED IN THE MONTH BY TRADES

Name	TIDM	ISIN	Trades	% Total
1 ISHARES FTSE 100	ISF	IE0005042456	13,297	14.2%
2 ETFs NATURAL GAS	NGAS	GB00B15KY104	6,199	6.6%
3 ETFs LEVERAGED NATURAL GAS	LNGA	JE00B2NFTQ41	3,540	3.8%
4 ETFs PHYSICAL GOLD	PHAU	JE00B1VS3770	3,431	3.7%
5 ISHARES GBP CORPORATE BOND	SLXX	IE00B00FV011	2,909	3.1%
6 GOLD BULLION SECURITIES	GBS	GB00B00FHZ82	2,607	2.8%
7 ETFs LEVERAGED CRUDE OIL	LOIL	JE00B2NFTJ73	2,181	2.3%
8 ETFs PHYSICAL SILVER	PHAG	JE00B1VS3333	1,839	2.0%
9 ISHARES # IDX LKD GILT	INXG	IE00B1FZSD53	1,836	2.0%
10 ISHARES S&P 500	IUSA	IE0031442068	1,820	1.9%

MOST TRADED IN THE YEAR 2009 BY TURNOVER

Name	TIDM	ISIN	GBP Turnover	% Total
1 ISHARES FTSE 100	ISF	IE0005042456	11,503,546,465	15.8%
2 GOLD BULLION SECURITIES	GBS	GB00B00FHZ82	5,400,676,269	7.4%
3 ETFs PHYSICAL GOLD	PHAU	JE00B1VS3770	3,646,422,487	5.0%
4 ISHARES GBP CORPORATE BOND	SLXX	IE00B00FV011	2,134,818,420	2.9%
5 ISHARES S&P 500	IUSA	IE0031442068	2,073,085,344	2.8%
6 ISHARES # IDX LKD GILT	INXG	IE00B1FZSD53	1,617,476,027	2.2%
7 ETFs NATURAL GAS	NGAS	GB00B15KY104	1,507,357,273	2.1%
8 S&P 500	IDUS	IE0031442068	1,504,641,033	2.1%
9 ETFs LEVERAGED CRUDE OIL	LOIL	JE00B2NFTJ73	1,469,162,926	2.0%
10 ISHARES MSCI EUROPE EX-UK	IEUX	IE00B14X4N27	1,396,771,899	1.9%

MOST TRADED IN THE YEAR 2009 BY TRADES

Name	TIDM	ISIN	Trades	% Total
1 ISHARES FTSE 100	ISF	IE0005042456	198,759	19.5%
2 ETFs NATURAL GAS	NGAS	GB00B15KY104	42,615	4.2%
3 GOLD BULLION SECURITIES	GBS	GB00B00FHZ82	40,076	3.9%
4 ISHARES GBP CORPORATE BOND	SLXX	IE00B00FV011	39,434	3.9%
5 ETFs LEVERAGED CRUDE OIL	LOIL	JE00B2NFTJ73	39,079	3.8%
6 ISHARES S&P 500	IUSA	IE0031442068	37,787	3.7%
7 ETFs PHYSICAL GOLD	PHAU	JE00B1VS3770	34,445	3.4%
8 ETFs LEVERAGED NATURAL GAS	LNGA	JE00B2NFTQ41	28,523	2.8%
9 ETFs CRUDE OIL	CRUD	GB00B15KXV33	22,291	2.2%
10 ISHARES # IDX LKD GILT	INXG	IE00B1FZSD53	19,170	1.9%

<http://www.londonstockexchange.com/statistics/specialist-issues/etfs-etps/etfs-etps.htm>

Copyright © December 2009 London Stock Exchange plc. Registered in England and Wales No. 2075721. London Stock Exchange plc has used all reasonable efforts to ensure that the information contained in this publication is correct at the time of going to press, but shall not be liable for decisions made in reliance on it. London Stock Exchange and the coat of arms device are registered trademarks of London Stock Exchange plc.