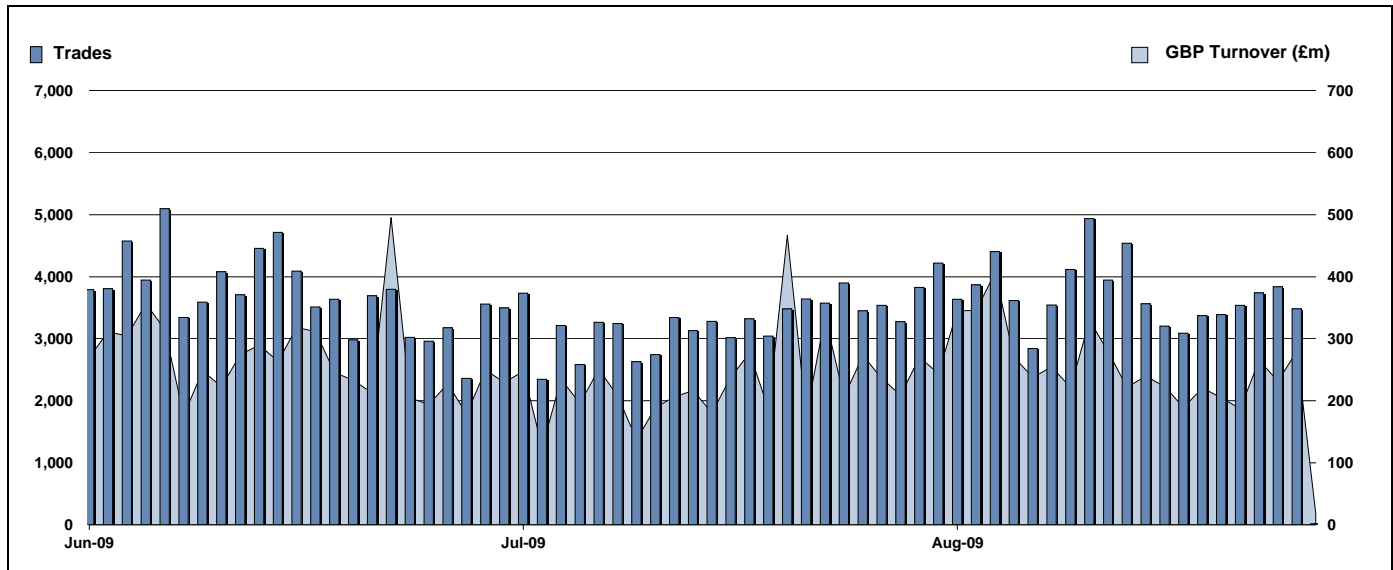


Exchange Traded Funds and Exchange Traded Products

Monthly statistics - August 2009



DAILY TRADING



MAIN INDICATORS

	LISTED INSTRUMENTS		TRADING					
	LISTED END of MONTH	MONTH NEW LISTED	Trades	July-09 GBP Turnover	Trades	August-09 GBP Turnover	Trades	2009 YTD GBP Turnover
ETF - DEVELOPED MARKET	78	2	31,495	2,190,318,490	30,569	2,117,229,172	266,023	19,423,906,955
ETF - BONDS	23	2	7,991	614,390,303	7,554	659,139,058	64,133	5,820,089,233
ETF - EMERGING MARKETS	36	-	6,387	572,051,808	6,298	512,343,845	50,611	4,152,720,791
ETF - STYLE	5	-	140	26,057,150	234	29,431,152	1,101	162,882,369
OTHERS	54	-	2,214	190,839,845	3,026	255,381,498	16,422	1,313,752,505
ETC	124	-	26,858	1,700,325,809	27,215	1,639,139,185	217,024	14,669,471,720
ETN	1	-	14	1,832,844	16	2,490,249	188	30,691,381
TOTAL	321	4	75,099	5,295,816,250	74,912	5,215,154,159	615,502	45,573,514,954

MOST TRADED IN THE MONTH BY TURNOVER

Name	TIDM	ISIN	GBP Turnover	% Total
1 ISHARES FTSE 100	ISF	IE0005042456	755,285,188	14.5%
2 GOLD BULLION SECURITIES	GBS	GB00B00FHZ82	325,778,860	6.2%
3 ISHARES GBP CORPORATE BOND	SLXX	IE00B00FV011	178,007,582	3.4%
4 ISHARES DJ EURO STOXX 50	EUE	IE0008471009	161,848,795	3.1%
5 ETFs PHYSICAL GOLD	PHAU	JE00B1VS3770	159,026,778	3.0%
6 ETFs NATURAL GAS	NGAS	GB00B15KY104	130,202,908	2.5%
7 ETFs SHORT CRUDE OIL	SOIL	JE00B24DK975	116,317,924	2.2%
8 ISHARES EUR CORPORATE BOND	IBCX	IE0032523478	111,556,719	2.1%
9 ISHARES FTSE 250	MIDD	IE00B00FV128	98,250,341	1.9%
10 ISHARES S&P 500	IUSA	IE0031442068	82,072,485	1.6%

MOST TRADED IN THE MONTH BY TRADES

Name	TIDM	ISIN	Trades	% Total
1 ISHARES FTSE 100	ISF	IE0005042456	14,921	19.9%
2 ETFs NATURAL GAS	NGAS	GB00B15KY104	3,751	5.0%
3 ISHARES GBP CORPORATE BOND	SLXX	IE00B00FV011	3,123	4.2%
4 ETFs LEVERAGED NATURAL GAS	LNGA	JE00B2NFTQ41	2,988	4.0%
5 ISHARES S&P 500	IUSA	IE0031442068	2,034	2.7%
6 GOLD BULLION SECURITIES	GBS	GB00B00FHZ82	2,006	2.7%
7 ETFs PHYSICAL GOLD	PHAU	JE00B1VS3770	1,897	2.5%
8 ISHARES FTSE 250	MIDD	IE00B00FV128	1,721	2.3%
9 ETFs LEVERAGED CRUDE OIL	LOIL	JE00B2NFTJ73	1,704	2.3%
10 ISHARES # IDX LKD GILT	INXG	IE00B1FZSD53	1,603	2.1%

MOST TRADED IN THE YEAR 2009 BY TURNOVER

Name	TIDM	ISIN	GBP Turnover	% Total
1 ISHARES FTSE 100	ISF	IE0005042456	8,190,799,349	18.0%
2 GOLD BULLION SECURITIES	GBS	GB00B00FHZ82	4,157,622,703	9.1%
3 ETFs PHYSICAL GOLD	PHAU	JE00B1VS3770	2,433,944,892	5.3%
4 ISHARES GBP CORPORATE BOND	SLXX	IE00B00FV011	1,498,042,214	3.3%
5 ISHARES S&P 500	IUSA	IE0031442068	1,471,045,705	3.2%
6 ISHARES DJ EURO STOXX 50	EUE	IE0008471009	1,128,994,260	2.5%
7 ETFs LEVERAGED CRUDE OIL	LOIL	JE00B2NFTJ73	1,053,814,180	2.3%
8 S&P 500	IDUS	IE0031442068	1,039,374,480	2.3%
9 ETFs CRUDE OIL	CRUD	GB00B15KXV33	878,018,122	1.9%
10 ISHARES # IDX LKD GILT	INXG	IE00B1FZSD53	863,319,978	1.9%

MOST TRADED IN THE YEAR 2009 BY TRADES

Name	TIDM	ISIN	Trades	% Total
1 ISHARES FTSE 100	ISF	IE0005042456	138,886	22.6%
2 GOLD BULLION SECURITIES	GBS	GB00B00FHZ82	30,358	4.9%
3 ISHARES S&P 500	IUSA	IE0031442068	29,051	4.7%
4 ETFs LEVERAGED CRUDE OIL	LOIL	JE00B2NFTJ73	28,649	4.7%
5 ISHARES GBP CORPORATE BOND	SLXX	IE00B00FV011	27,748	4.5%
6 ETFs PHYSICAL GOLD	PHAU	JE00B1VS3770	17,749	2.9%
7 ETFs CRUDE OIL	CRUD	GB00B15KXV33	16,818	2.7%
8 ETFs NATURAL GAS	NGAS	GB00B15KY104	14,752	2.4%
9 ETFs BRENT OIL	OILB	GB00B0CTWC01	14,284	2.3%
10 ISHARES # IDX LKD GILT	INXG	IE00B1FZSD53	11,366	1.8%

<http://www.londonstockexchange.com/statistics/specialist-issues/etfs-etps/etfs-etps.htm>

Copyright © August 2009 London Stock Exchange plc. Registered in England and Wales No. 2075721. London Stock Exchange plc has used all reasonable efforts to ensure that the information contained in this publication is correct at the time of going to press, but shall not be liable for decisions made in reliance on it. London Stock Exchange and the coat of arms device are registered trademarks of London Stock Exchange plc.