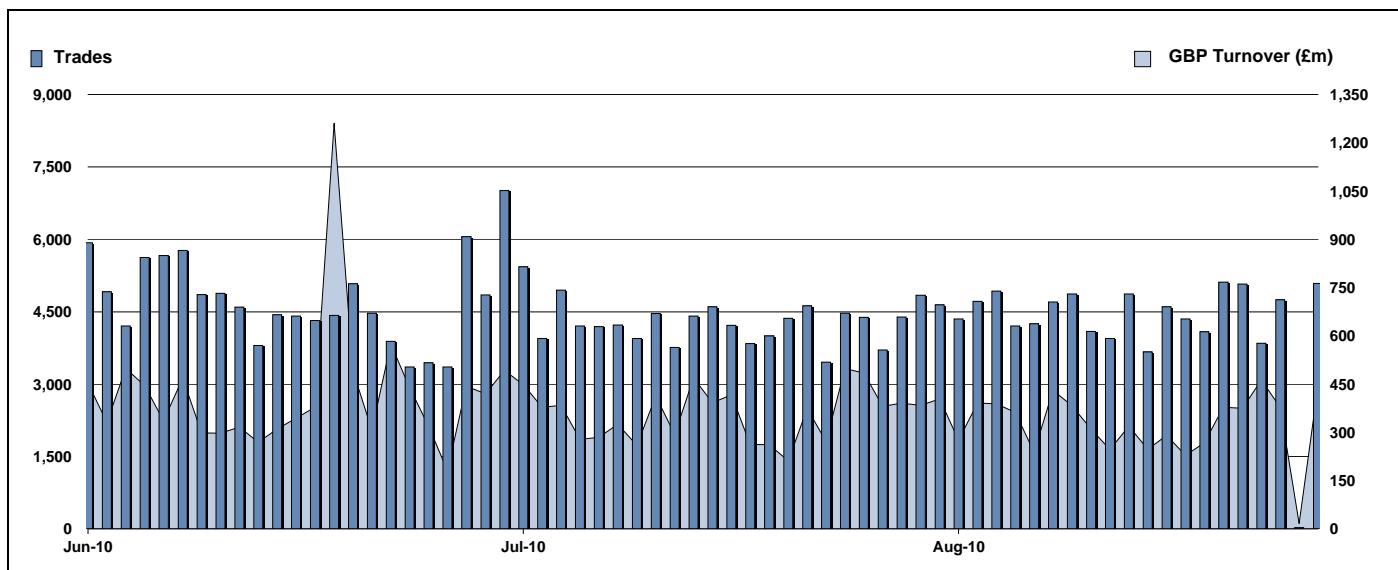


# Exchange Traded Funds and Exchange Traded Products

Monthly statistics - August 2010



## DAILY TRADING



## MAIN INDICATORS

	LISTED INSTRUMENTS		TRADING					
	LISTED END OF MONTH	MONTH NEW LISTED	July-10		August-10		2010 YTD	
			Trades	GBP Turnover	Trades	GBP Turnover	Trades	GBP Turnover
ETF - DEVELOPED MARKET	117	-	46,626	3,270,315,633	41,622	2,805,099,418	366,311	29,758,523,686
ETF - BONDS	33	-	9,506	998,032,972	9,337	1,211,173,111	80,555	8,096,841,878
ETF - EMERGING MARKETS	40	-	9,910	773,530,539	9,461	612,301,287	87,778	7,737,517,515
ETF - STYLE	7	-	310	42,190,512	209	41,791,444	2,050	369,610,335
OTHERS	71	-	4,408	258,230,667	4,794	250,911,866	39,591	2,262,467,042
ETC	207	-	24,771	2,484,152,614	27,744	2,196,076,839	253,496	18,960,574,006
ETN	29	-	430	25,881,874	510	34,530,144	1,926	130,652,315
<b>TOTAL</b>	<b>504</b>	<b>-</b>	<b>95,961</b>	<b>7,852,334,810</b>	<b>93,677</b>	<b>7,151,884,109</b>	<b>831,707</b>	<b>67,316,186,777</b>

### MOST TRADED IN THE MONTH BY TURNOVER

Name	TIDM	ISIN	GBP Turnover	% Total
1 ISHARES FTSE 100	ISF	IE0005042456	719,764,968	10.0%
2 ETFs PHYSICAL GOLD	PHAU	JE00B1VS3770	419,893,103	5.8%
3 ETFs AGRICULTURE DJ-UBSCI	AIGA	GB00B15KYH63	324,386,614	4.5%
4 GOLD BULLION SECURITIES	GBS	GB00B00FHZ82	302,727,472	4.2%
5 ISHARES FTSE UK GILTS 0-5 #	IGLS	IE00B4WVJK79	249,984,903	3.5%
6 ISHARES MARKET IBOXX # CORPORATESLXX	IE00B00FV011	IE00B00FV011	201,999,198	2.8%
7 ISHARES FTSE UK ALL STKS GILT	IGLT	IE00B1FZSB30	160,417,988	2.2%
8 ISHARES S&P 500	IUSA	IE0031442068	155,911,395	2.2%
9 MSCI EMERGING MARKETS	IDEM	IE00B0M63177	133,814,181	1.9%
10 S&P 500	IDUS	IE0031442068	128,492,854	1.8%

### MOST TRADED IN THE MONTH BY TRADES

Name	TIDM	ISIN	Trades	% Total
1 ISHARES FTSE 100	ISF	IE0005042456	15,072	15.9%
2 ISHARES S&P 500	IUSA	IE0031442068	2,723	2.9%
3 ISHARES MARKET IBOXX # CORPORATE BSLXX	IE00B00FV011	IE00B00FV011	2,137	2.2%
4 ISHARES FTSE 250	MIDD	IE00B00FV128	2,090	2.2%
5 ETFs PHYSICAL GOLD	PHAU	JE00B1VS3770	2,035	2.1%
6 ETFs LEVERAGED NATURAL GAS	LNGA	JE00B2NFTQ41	1,975	2.1%
7 GOLD BULLION SECURITIES	GBS	GB00B00FHZ82	1,922	2.0%
8 ISHARES BARCAP # INDEX-LINKED GILTS INXG	IE00B1FZSD53	IE00B1FZSD53	1,827	1.9%
9 ETFs WHEAT	WEAT	GB00B15KY765	1,785	1.9%
10 ETFs LEVERAGED CRUDE OIL	LOIL	JE00B2NFTJ73	1,738	1.8%

### MOST TRADED IN THE YEAR 2010 BY TURNOVER

Name	TIDM	ISIN	GBP Turnover	% Total
1 ISHARES FTSE 100	ISF	IE0005042456	7,304,017,498	10.8%
2 ETFs PHYSICAL GOLD	PHAU	JE00B1VS3770	4,179,535,202	6.2%
3 GOLD BULLION SECURITIES	GBS	GB00B00FHZ82	3,065,326,795	4.5%
4 ISHARES S&P 500	IUSA	IE0031442068	1,527,345,601	2.3%
5 MSCI EMERGING MARKETS SOURCE E'MXFS	IE00B3DWVS88	IE00B3DWVS88	1,430,288,108	2.1%
6 ISHARES EURO STOXX 50	EUE	IE0008471009	1,374,573,603	2.0%
7 DB X-TRACKERS \$ MONEY MKT ETF CAXUSD	LU0356691882	LU0356691882	1,294,654,361	1.9%
8 ETFs AGRICULTURE DJ-UBSCI	AIGA	GB00B15KYH63	1,190,606,717	1.8%
9 ISHARES MARKET IBOXX # CORPORATESLXX	IE00B00FV011	IE00B00FV011	1,111,419,080	1.6%
10 ISHARES MSCI WORLD	IWRD	IE00B0M62Q58	1,091,533,350	1.6%

### MOST TRADED IN THE YEAR 2010 BY TRADES

Name	TIDM	ISIN	Trades	% Total
1 ISHARES FTSE 100	ISF	IE0005042456	139,407	16.7%
2 ETFs PHYSICAL GOLD	PHAU	JE00B1VS3770	27,259	3.3%
3 ISHARES S&P 500	IUSA	IE0031442068	24,018	2.9%
4 ISHARES MARKET IBOXX # CORPORATE BSLXX	IE00B00FV011	IE00B00FV011	20,167	2.4%
5 ETFs NATURAL GAS	NGAS	GB00B15KY104	19,957	2.4%
6 GOLD BULLION SECURITIES	GBS	GB00B00FHZ82	18,609	2.2%
7 ISHARES FTSE 250	MIDD	IE00B00FV128	16,820	2.0%
8 ISHARES BARCAP # INDEX-LINKED GILTS INXG	IE00B1FZSD53	IE00B1FZSD53	16,531	2.0%
9 ETFs LEVERAGED NATURAL GAS	LNGA	JE00B2NFTQ41	16,421	2.0%
10 ETFs LEVERAGED CRUDE OIL	LOIL	JE00B2NFTJ73	15,087	1.8%

<http://www.londonstockexchange.com/statistics/specialist-issues/etfs-etps/etfs-etps.htm>

Copyright © August 2010 London Stock Exchange plc. Registered in England and Wales No. 2075721. London Stock Exchange plc has used all reasonable efforts to ensure that the information contained in this publication is correct at the time of going to press, but shall not be liable for decisions made in reliance on it. London Stock Exchange and the coat of arms device are registered trademarks of London Stock Exchange plc.