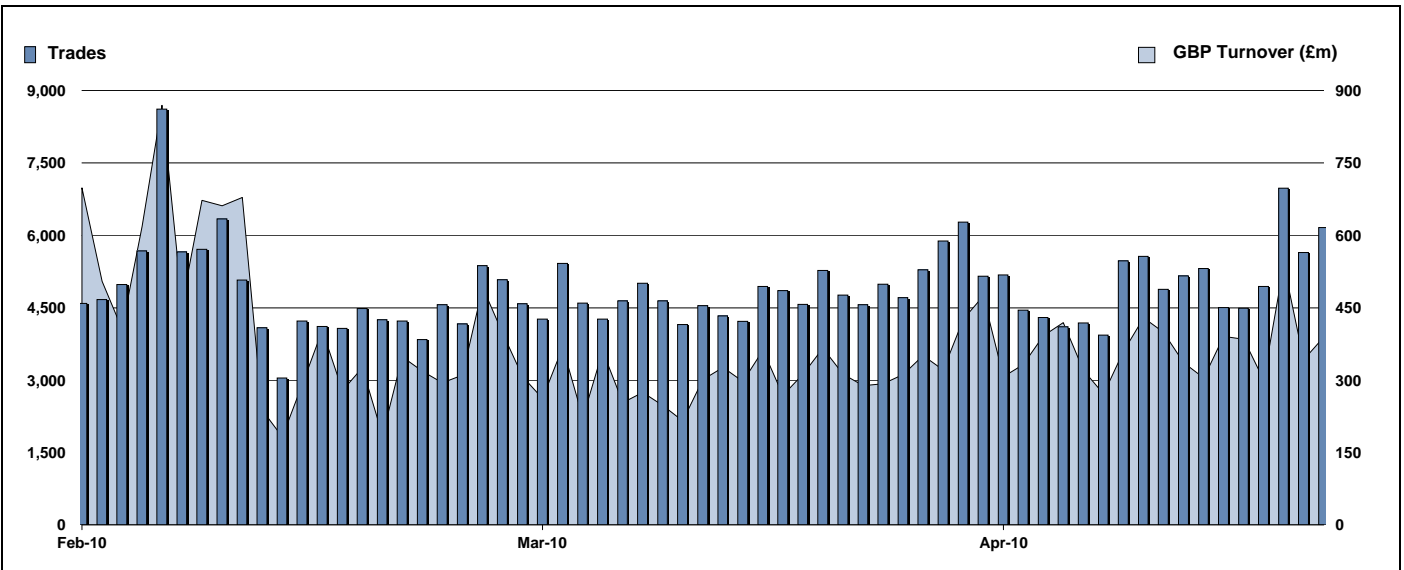


Exchange Traded Funds and Exchange Traded Products

Monthly statistics - April 2010



DAILY TRADING



MAIN INDICATORS

	LISTED INSTRUMENTS		TRADING					
	LISTED END OF MONTH	MONTH NEW LISTED	March-10		April-10		2010 YTD	
			Trades	GBP Turnover	Trades	GBP Turnover	Trades	GBP Turnover
ETF - DEVELOPED MARKET	101	2	43,117	3,089,014,857	43,440	3,105,916,971	167,173	14,627,302,063
ETF - BONDS	31	-	12,107	993,331,249	11,055	681,783,604	42,967	3,554,936,061
ETF - EMERGING MARKETS	38	1	12,126	697,948,845	12,640	1,005,242,610	44,362	3,152,316,327
ETF - STYLE	5	-	277	44,494,575	296	56,696,981	1,007	169,715,972
OTHERS	69	-	5,715	324,432,316	5,839	288,096,955	20,353	1,142,734,802
ETC	171	-	35,701	2,037,159,660	29,084	2,296,101,170	132,565	8,670,841,345
ETN	29	28	19	4,217,245	205	4,301,299	298	26,395,567
TOTAL	444	31	109,062	7,190,598,747	102,559	7,438,139,589	408,725	31,344,242,135

MOST TRADED IN THE MONTH BY TURNOVER

Name	TIDM	ISIN	GBP Turnover	% Total
1 ISHARES FTSE 100	ISF	IE0005042456	782,567,772	10.5%
2 ETFS PHYSICAL GOLD	PHAU	JE00B1VS3770	673,665,585	9.1%
3 GOLD BULLION SECURITIES	GBS	GB00B00FHZ82	280,335,108	3.8%
4 ISHARES DJ EURO STOXX 50	EUE	IE0008471009	276,169,305	3.7%
5 MSCI EMERGING MARKETS	IDEM	IE00B0M63177	225,206,455	3.0%
6 ISHARES S&P 500	IUSA	IE0031442068	223,257,790	3.0%
7 ISHARES MSCI EMERGING MARKET	IEEM	IE00B0M63177	203,720,821	2.7%
8 ISHARES MSCI WORLD	IWRD	IE00B0M62Q58	139,683,766	1.9%
9 S&P 500	IDUS	IE0031442068	116,694,180	1.6%
10 ETFS SHORT CRUDE OIL	SOIL	JE00B24DK975	112,466,078	1.5%

MOST TRADED IN THE MONTH BY TRADES

Name	TIDM	ISIN	Trades	% Total
1 ISHARES FTSE 100	ISF	IE0005042456	14,947	14.6%
2 ISHARES S&P 500	IUSA	IE0031442068	3,592	3.5%
3 ETFS PHYSICAL GOLD	PHAU	JE00B1VS3770	3,514	3.4%
4 ISHARES GBP CORPORATE BOND	SLXX	IE00B00FV011	2,616	2.6%
5 ETFS LEVERAGED NATURAL GAS	LNGA	IE00B2NFTQ41	2,257	2.2%
6 ISHARES # IDX LKD GILT	INXG	IE00B1FZSD53	2,224	2.2%
7 ISHARES FTSE 250	MIDD	IE00B00FV128	2,168	2.1%
8 DB X-TRACKERS FTSE 100 ETF	XUKX	LU0292097234	2,089	2.0%
9 ETFS NATURAL GAS	NGAS	GB00B15KY104	2,081	2.0%
10 GOLD BULLION SECURITIES	GBS	GB00B00FHZ82	1,949	1.9%

MOST TRADED IN THE YEAR 2010 BY TURNOVER

Name	TIDM	ISIN	GBP Turnover	% Total
1 ISHARES FTSE 100	ISF	IE0005042456	3,466,715,889	11.1%
2 ETFS PHYSICAL GOLD	PHAU	JE00B1VS3770	1,853,863,575	5.9%
3 DB X-TRACKERS \$ MONEY MKT ETF CAXUSD	LU0356591882		1,258,542,113	4.0%
4 GOLD BULLION SECURITIES	GBS	GB00B00FHZ82	1,145,601,795	3.7%
5 DB X-TRACKERS # MONEY MKT ETF CAXGBP	LU0356592187		1,012,221,882	3.2%
6 LYXOR ETF FTSE 100	L100	FR0010438127	677,131,452	2.2%
7 ISHARES S&P 500	IUSA	IE0031442068	668,956,900	2.1%
8 ISHARES MSCI EMERGING MARKET	IEEM	IE00B0M63177	562,605,192	1.8%
9 ISHARES DJ EURO STOXX 50	EUE	IE0008471009	560,931,341	1.8%
10 ISHARES MSCI WORLD	IWRD	IE00B0M62Q58	546,506,788	1.7%

MOST TRADED IN THE YEAR 2010 BY TRADES

Name	TIDM	ISIN	Trades	% Total
1 ISHARES FTSE 100	ISF	IE0005042456	65,067	15.9%
2 ETFS NATURAL GAS	NGAS	GB00B15KY104	15,362	3.8%
3 ETFS PHYSICAL GOLD	PHAU	JE00B1VS3770	13,439	3.3%
4 ISHARES GBP CORPORATE BOND	SLXX	IE00B00FV011	11,802	2.9%
5 ISHARES S&P 500	IUSA	IE0031442068	11,234	2.7%
6 ETFS LEVERAGED NATURAL GAS	LNGA	IE00B2NFTQ41	9,825	2.4%
7 ISHARES # IDX LKD GILT	INXG	IE00B1FZSD53	8,726	2.1%
8 GOLD BULLION SECURITIES	GBS	GB00B00FHZ82	8,116	2.0%
9 ETFS LEVERAGED CRUDE OIL	LOIL	IE00B2NFTJ73	7,094	1.7%
10 ISHARES FTSE 250	MIDD	IE00B00FV128	7,065	1.7%

<http://www.londonstockexchange.com/statistics/specialist-issues/etfs-etps/etfs-etps.htm>

Copyright © April 2010 London Stock Exchange plc. Registered in England and Wales No. 2075721. London Stock Exchange plc has used all reasonable efforts to ensure that the information contained in this publication is correct at the time of going to press, but shall not be liable for decisions made in reliance on it. London Stock Exchange and the coat of arms device are registered trademarks of London Stock Exchange plc.