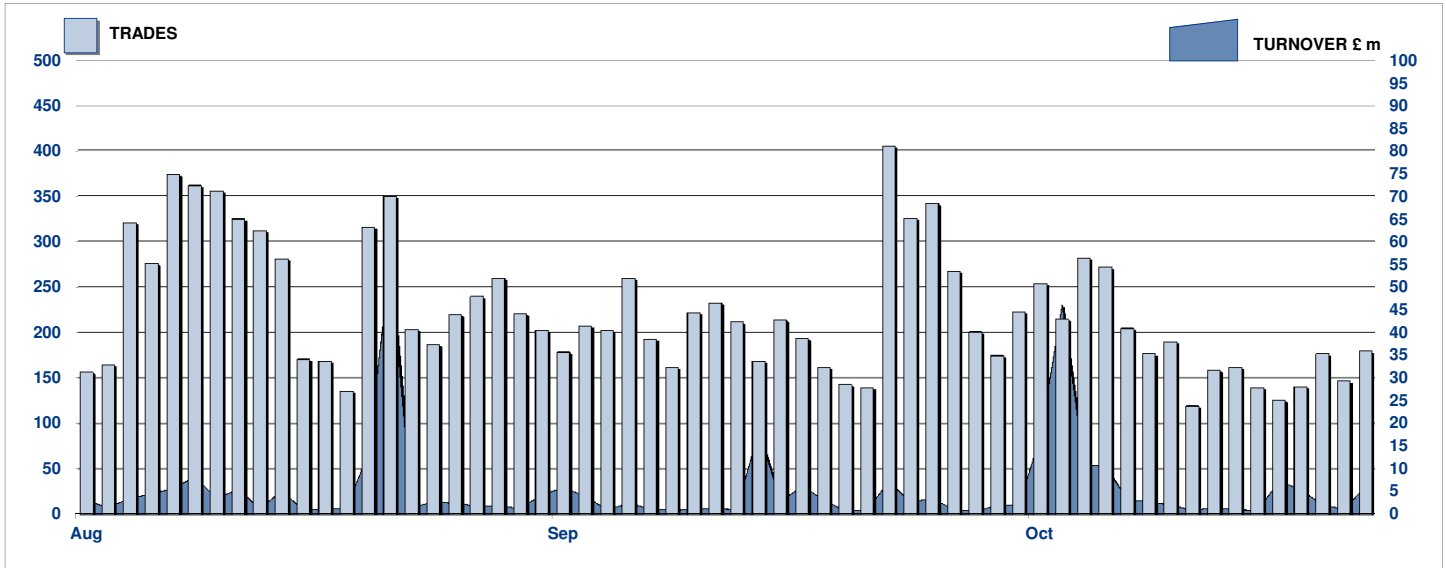


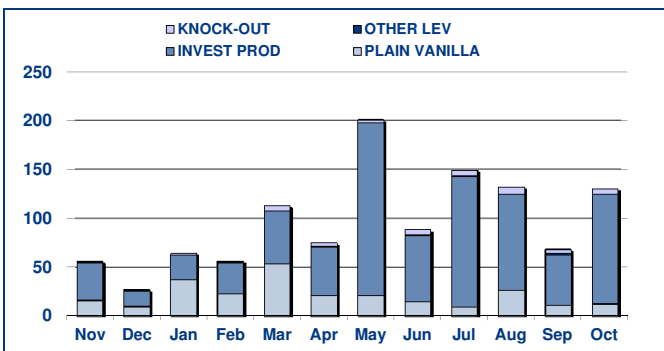
SECURITISED DERIVATIVES DAILY TURNOVER



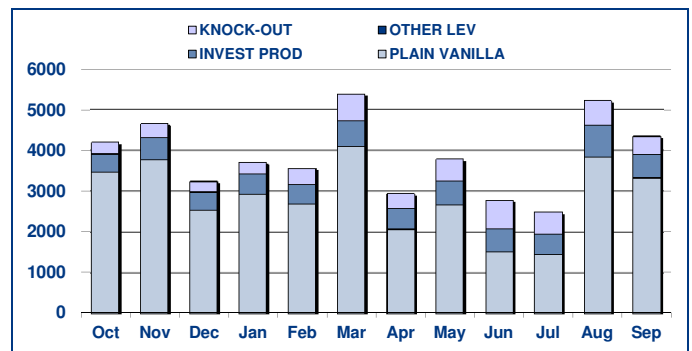
MAIN INDICATORS

	LISTED					TRADING					
	End 2010	September-11		October-11		September-11		October-11		2011 YTD	
	LISTED END OF MONTH	LISTED END OF MONTH	MONTH NEW LISTED	LISTED END OF MONTH	MONTH NEW LISTED	TRADES number	TURNOVER £ m	TRADES number	TURNOVER £ m	TRADES number	TURNOVER £ m
MARKET SEGMENTS											
PLAIN VANILLA CW	970	728	48	730	3	3,328	11.3	2,933	12.80	27,553	231.78
KNOCK-OUT PRODUCTS	28	74	-	76	9	441	4.4	334	5.26	4,813	42.70
OTHER LEVERAGE CERTIFICATES	57	87	2	89	2	2	1.34	2	0.00	30	3.74
INVESTMENT PRODUCTS	330	486	13	503	21	580	51.7	586	112.32	5,687	800.94
TOTAL	1,385	1,375	63	1,398	35	4,351	68.64	3,855	130.38	38,083	1,079.16
ISSUERS											
GOLDMAN SACHS & CO WERTPAPIER GMBH	8	5	-	5	-	-	0.00	1	6.64	14	7.98
GOLDMAN SACHS INTERNATIONAL	56	84	7	85	2	78	11.60	72	20.44	719	333.45
GOLDMAN SACHS JERSEY	4	2	-	2	-	1	1	-	-	4	1.36
MERRILL LYNCH INTERNATIONAL & CO CV	9	10	-	10	-	-	0.00	-	-	11	0.22
MERRILL LYNCH SA	9	11	-	12	1	-	0.00	1	0.00	59	10.05
ROYAL BANK OF SCOTLAND PLC	492	327	28	335	8	1,018	38.92	1,030	89.03	10,819	461.32
SOCIETE GENERALE ACCEPTANCE NV	760	861	23	856	6	3,236	14.10	2,741	13.11	26,269	254.23
BARCLAYS BANK PLC	40	43	1	44	1	7	0.02	5	0.03	134	3.20
HS BC BANK PLC	7	32	4	33	1	11	2.66	5	1.13	54	7.36
TOTAL	1,385	1,375	63	1,382	19	4,351	68.64	3,855	130.38	38,083	1,079.16

**TURNOVER
MONTHLY FIGURES - £m**



**TRADES
MONTHLY FIGURES**



Glossary

Plain Vanilla CW: Covered Warrants (Market Sector Code CVWT)
Other Leveraged Products: All leveraged products (Market Sector Code OTHE and OFLV) excluding covered warrants and knock out products

Knock-out Products: Knock-out products (Market Sector Code KNCK)
Investment Products: All investment products (Market Segment Code INSD). This includes Capital Protected, Trackers, Yield Enhancement and

Markets Analysis
10 Paternoster Square, London. EC4M 7LS

email: markets_analysis@londonstockexchange.com
www.londonstockexchange.com