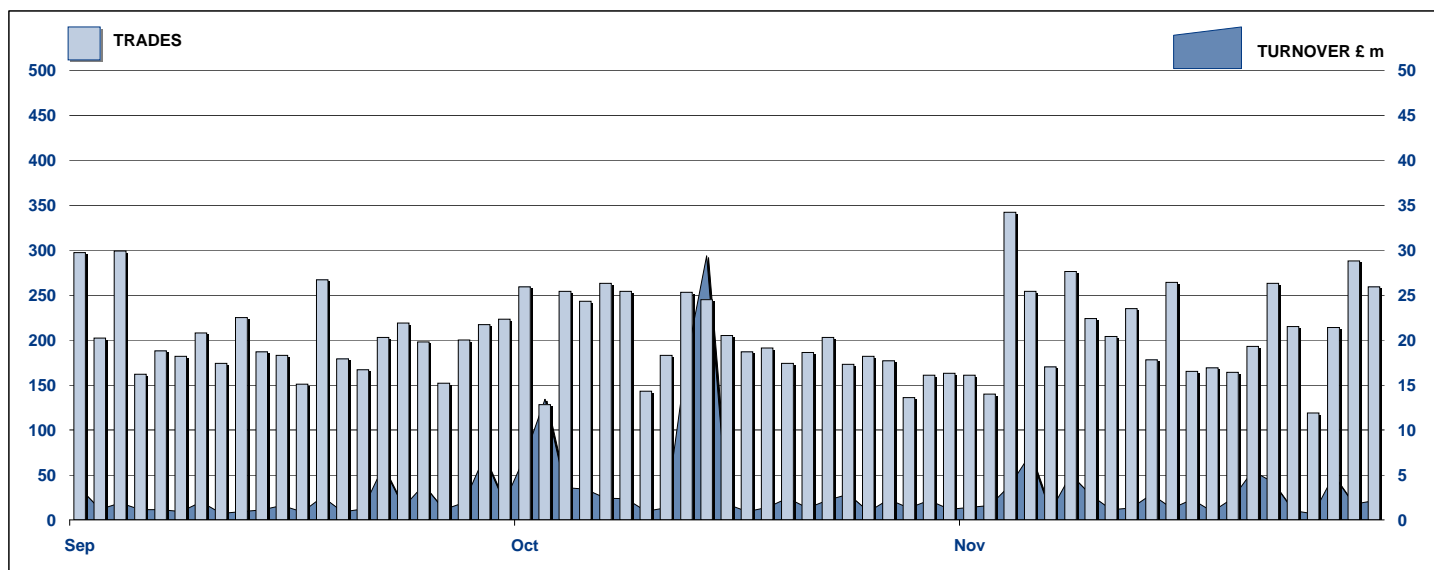


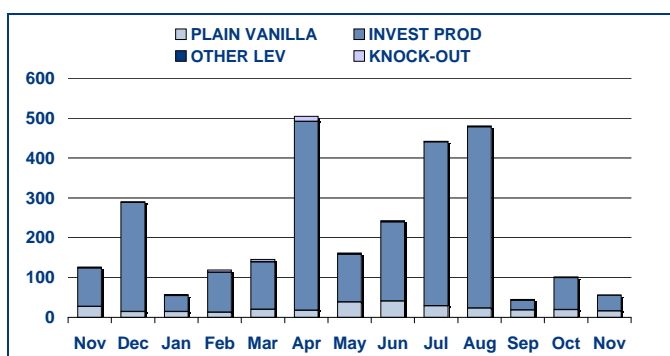
SECURITISED DERIVATIVES DAILY TURNOVER



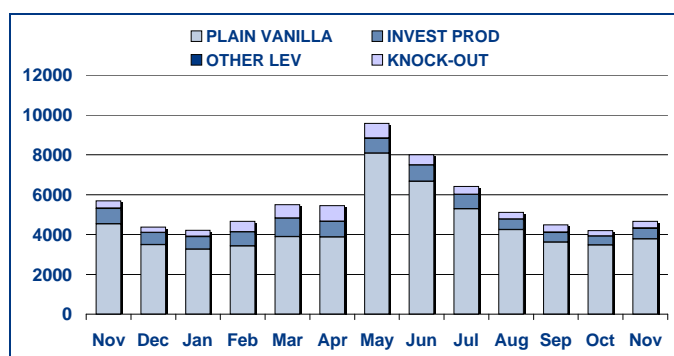
MAIN INDICATORS

	LISTED					TRADING					
	End 2009	October-10		November-10		October-10		November-10		Jan-Nov 2010	
	LISTED END OF MONTH	LISTED END OF MONTH	MONTH NEW LISTED	LISTED END OF MONTH	MONTH NEW LISTED	TRADES number	TURNOVER £ m	TRADES number	TURNOVER £ m	TRADES number	TURNOVER £ m
MARKET SEGMENTS											
PLAIN VANILLA CW	1,177	1,480	50	1,551	104	3,470	19.5	3,779	16.2	49,602	251.1
KNOCK-OUT PRODUCTS	28	30	5	25	-	276	1.4	345	1.1	5,306	40.5
OTHER LEVERAGE CERTIFICATES	21	49	4	53	4	9	0.1	8	0.0	74	1.1
INVESTMENT PRODUCTS	185	296	12	326	30	445	80.3	528	39.0	7,271	2060.4
TOTAL	1,411	1,855	71	1,955	138	4,200	101.3	4,660	56.4	62,253	2353.1
ISSUERS											
GOLDMAN SACHS & CO WERTPAPIER GMBH	5	8	-	8	-	2	30.36	1	0.01	43	1462.10
GOLDMAN SACHS INTERNATIONAL	34	49	2	53	4	48	15.92	88	18.02	667	73.08
GOLDMAN SACHS JERSEY	11	4	-	4	-	3	0.07	1	0.03	23	0.55
MERRILL LYNCH INTERNATIONAL & CO CV	8	11	-	11	-	-	0.00	1	0.01	17	1.00
MERRILL LYNCH SA	7	9	-	9	-	2	0.16	2	0.02	38	2.05
ROYAL BANK OF SCOTLAND PLC	582	751	6	752	16	1,114	37.01	1,275	25.38	19,533	596.31
SOCIETE GENERALE ACCEPTANCE NV	727	981	62	1,073	115	3,020	17.49	3,289	12.84	41,776	216.03
BARCLAYS BANK PLC	37	39	-	39	-	8	0.03	2	0.05	150	1.65
HS BC BANK PLC	-	3	1	6	3	3	0.31	1	0.00	6	0.32
TOTAL	1,411	1,855	71	1,955	138	4,200	101.3	4,660	56.4	62,253	2353.1

TURNOVER MONTHLY FIGURES - £m



TRADES MONTHLY FIGURES



Glossary

Plain Vanilla CW: Covered Warrants (Market Sector Code CVWT)
Other Leveraged Products: All leveraged products (Market Sector Code OTHL and OFLV) excluding covered warrants and knock out products

Knock-out Products: Knock-out products (Market Sector Code KNCK)
Investment Products: All investment products (Market Segment Code INSD). This includes Capital Protected, Trackers, Yield Enhancement and

Market Information & Analysis
10 Paternoster Square, London. EC4M 7LS
T +44 207 7797 1435
email: statistics@londonstockexchange.com
www.londonstockexchange.com