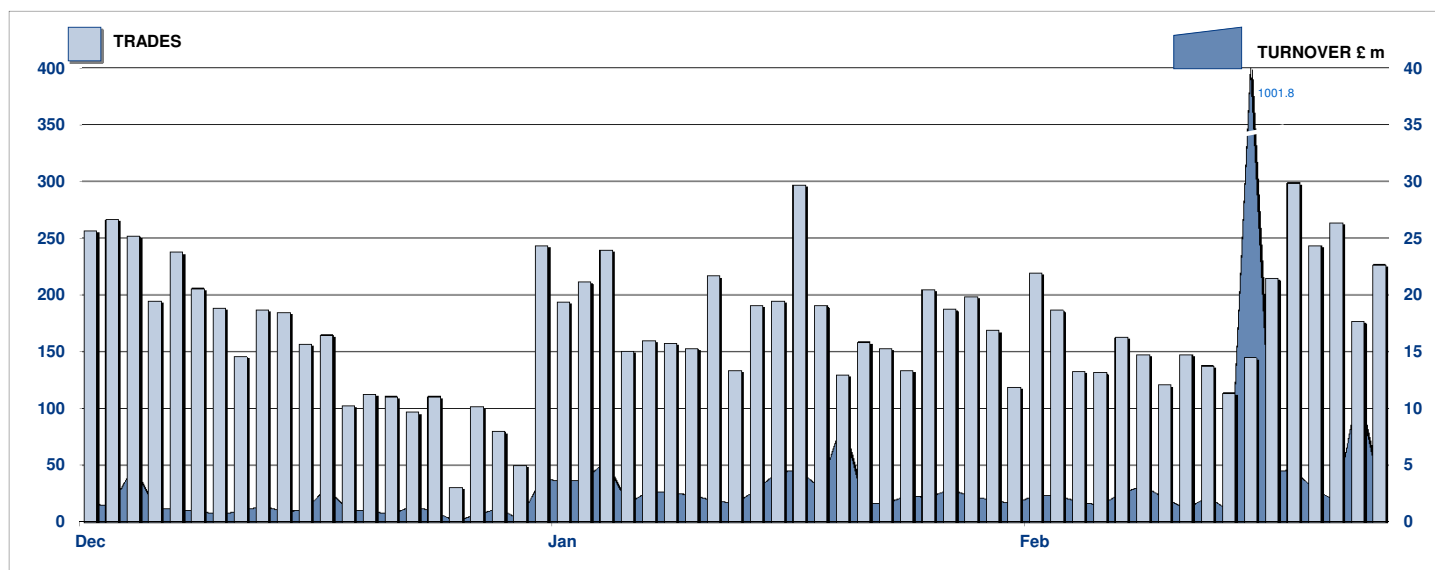


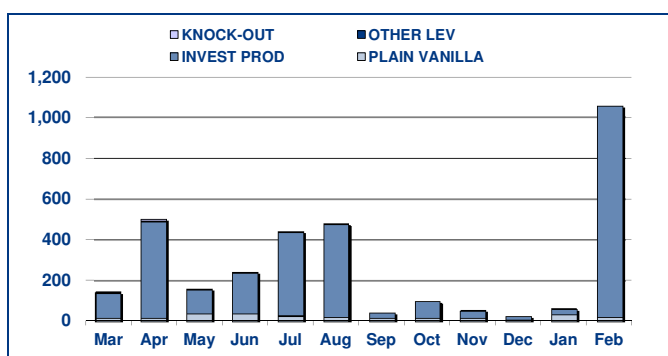
SECURITISED DERIVATIVES DAILY TURNOVER



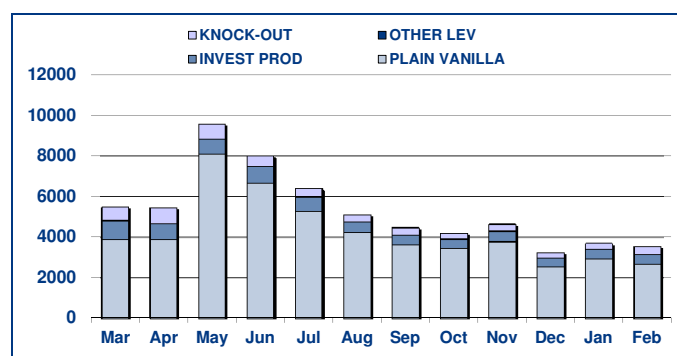
MAIN INDICATORS

	LISTED					TRADING					
	End 2010	January-11		February-11		January-11		February-11		2011 YTD	
	LISTED END OF MONTH	LISTED END OF MONTH	MONTH NEW LISTED	LISTED END OF MONTH	MONTH NEW LISTED	TRADES number	TURNOVER £ m	TRADES number	TURNOVER £ m	TRADES number	TURNOVER £ m
MARKET SEGMENTS											
PLAIN VANILLA CW	971	1,012	41	1,039	29	2,935	37.5	2,696	22.97	5,631	60.44
KNOCK-OUT PRODUCTS	28	29	2	31	4	270	1.5	395	1.54	665	3.00
OTHER LEVERAGE CERTIFICATES	53	55	2	56	3	1	0.0	2	0.00	3	0.00
INVESTMENT PRODUCTS	333	333	6	360	27	500	25.4	469	1,032.24	1,401	1,073.64
TOTAL	1,385	1,429	51	1,486	63	3,706	64.4	3,562	1,056.75	7,700	1,137.08
ISSUERS											
GOLDMAN SACHS & CO WERTPAPIER GMBH	8	6	-	6	-	2	0.02	1	0.02	3	0.04
GOLDMAN SACHS INTERNATIONAL	56	56	-	58	4	21	8.81	34	15.63	55	24.44
GOLDMAN SACHS JERSEY	4	4	-	4	-	-	0.00	1	0.00	1	0.00
MERRILL LYNCH INTERNATIONAL & CO CV	9	8	-	8	-	-	0.00	-	-	-	-
MERRILL LYNCH SA	9	9	-	9	-	3	0.05	2	0.19	5	0.24
ROYAL BANK OF SCOTLAND PLC	491	497	6	504	7	1,408	22.97	1,312	23.57	2,720	1,046.51
SOCIETE GENERALE ACCEPTANCE NV	761	802	45	846	48	2,264	32.47	2,206	17.26	4,470	49.73
BARCLAYS BANK PLC	40	40	-	40	-	8	0.04	3	0.00	11	0.05
HS BC BANK PLC	7	7	-	11	4	-	0.00	3	0.11	3	0.11
TOTAL	1,385	1,429	51	1,486	63	3,706	64.4	3,562	56.78	7,268	1,121.12

TURNOVER MONTHLY FIGURES - £m



TRADES MONTHLY FIGURES



Glossary

Plain Vanilla CW: Covered Warrants (Market Sector Code CVWT)
Other Leveraged Products: All leveraged products (Market Sector Code OTHL and OFLV) excluding covered warrants and knock out products

Knock-out Products: Knock-out products (Market Sector Code KNCK)
Investment Products: All investment products (Market Segment Code INSD). This includes Capital Protected, Trackers, Yield Enhancement and

Markets Analysis
10 Paternoster Square, London. EC4M 7LS
email: statistics@londonstockexchange.com
www.londonstockexchange.com