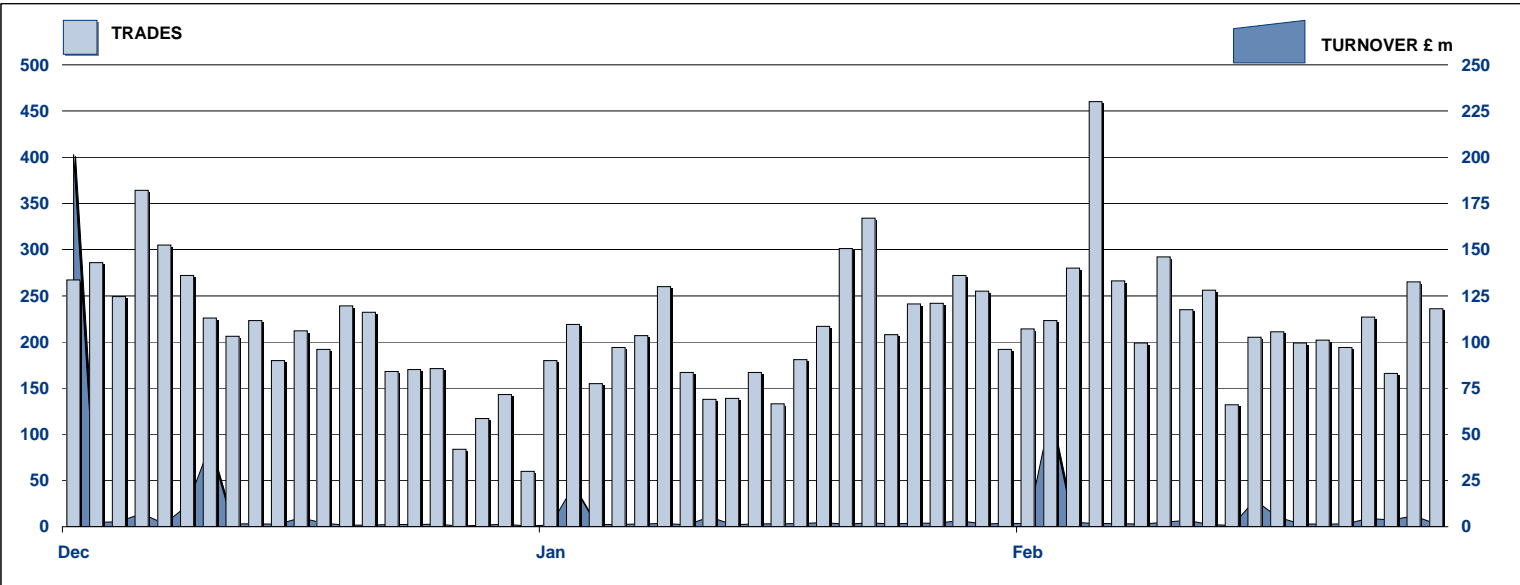


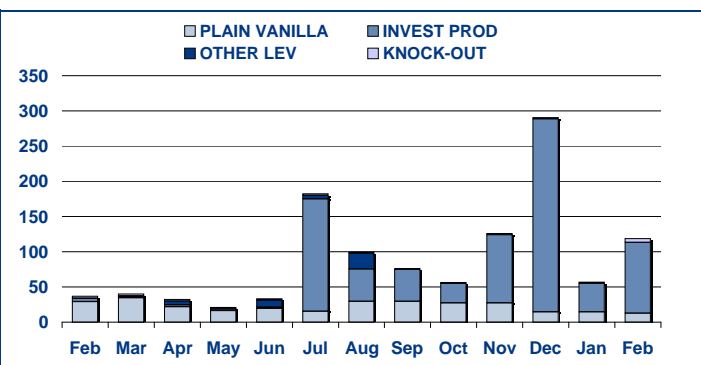
SECURITISED DERIVATIVES DAILY TURNOVER



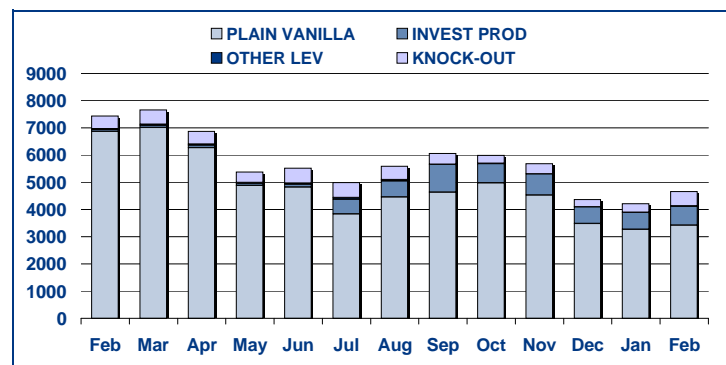
MAIN INDICATORS

MARKET SEGMENTS	LISTED					TRADING					
	End 2009	January-10		February-10		January-10		February-10		Jan-Feb 2010	
	LISTED END OF MONTH	LISTED END OF MONTH	MONTH NEW LISTED	LISTED END OF MONTH	MONTH NEW LISTED	TRADES number	TURNOVER £ m	TRADES number	TURNOVER £ m	TRADES number	TURNOVER £ m
PLAIN VANILLA CW	1,177	1,431	257	1,446	21	3,265	14.7	3,422	13.0	74,707	346.4
KNOCK-OUT PRODUCTS	28	35	11	35	2	311	1.8	530	5.6	6,838	37.6
OTHER LEVERAGE CERTIFICATES	21	23	2	26	3	4	0.1	1	0.0	201	35.1
INVESTMENT PRODUCTS	185	204	21	210	8	630	40.2	701	100.2	7,203	936.0
TOTAL	1,411	1,693	291	1,717	34	4,210	56.8	4,654	118.8	88,949	1355.1
ISSUERS											
GOLDMAN SACHS & CO WERTPAPIER GMBH	5	8	4	9	1	2	20.51	3	71.98	39	431.58
GOLDMAN SACHS INTERNATIONAL	34	34	-	35	1	38	4.85	63	7.50	666	75.56
GOLDMAN SACHS JERSEY	11	11	-	11	-	3	0.03	1	0.01	24	1.67
MERRILL LYNCH INTERNATIONAL & CO CV	8	8	-	8	-	5	0.06	2	0.01	156	5.27
MERRILL LYNCH SA	7	7	-	7	-	6	0.29	5	0.38	42	2.05
ROYAL BANK OF SCOTLAND	582	759	180	763	4	1,278	16.72	1,340	22.09	22,252	557.10
SOCIETE GENERALE ACCEPTANCE NV	727	829	107	846	27	2,855	14.31	3,223	16.75	65,458	276.03
BARCLAYS BANK PLC	37	37	-	38	1	23	0.08	17	0.08	312	5.89
TOTAL	1,411	1,693	291	1,717	34	4,210	56.8	4,654	118.8	88,949	1355.1

TURNOVER MONTHLY FIGURES - £m



TRADES MONTHLY FIGURES



Glossary

Plain Vanilla CW: Covered Warrants (Market Sector Code CVWT)
Other Leveraged Products: All leveraged products (Market Sector Code OTHE and OFLV) excluding covered warrants and knock out products

Knock-out Products: Knock-out products (Market Sector Code KNCK)
Investment Products: All investment products (Market Segment Code INSD). This includes Capital Protected, Trackers, Yield Enhancement and Participation Products

Market Information & Analysis
10 Paternoster Square, London. EC4M 7LS
T +44 207 7797 1435
email: statistics@londonstockexchange.com
www.londonstockexchange.com