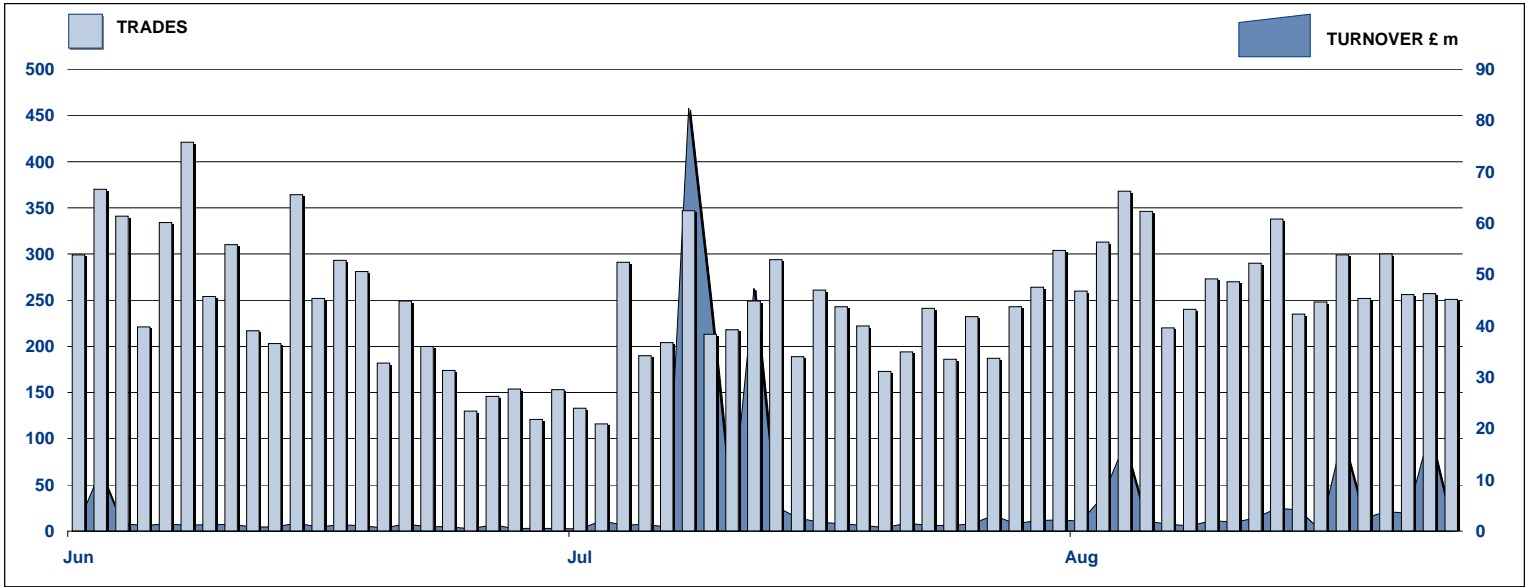


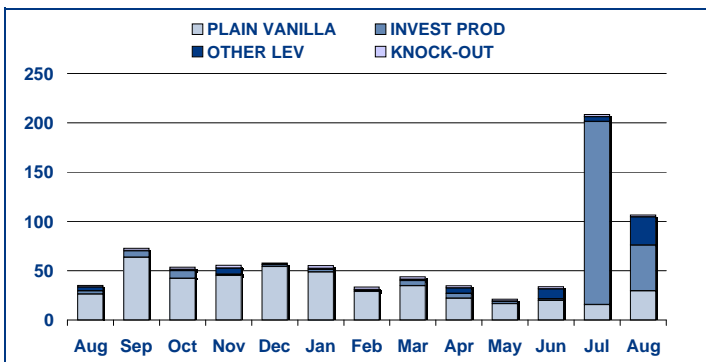
SECURITISED DERIVATIVES DAILY TURNOVER



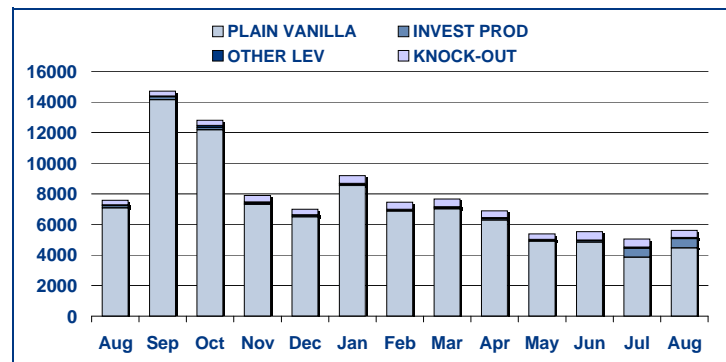
MAIN INDICATORS

	LISTED					TRADING					
	End 2008	July-09		August-09		July-09		August-09		Jan-August 2009	
	LISTED END of MONTH	LISTED END of MONTH	MONTH NEW LISTED	LISTED END of MONTH	MONTH NEW LISTED	TRADES number	TURNOVER £ m	TRADES number	TURNOVER £ m	TRADES number	TURNOVER £ m
MARKET SEGMENTS											
PLAIN VANILLA CW	904	1,201	152	1,378	200	3,853	15.5	4,456	29.5	46,649	215.1
KNOCK-OUT PRODUCTS	27	46	12	43	10	546	2.3	495	2.0	3,992	19.1
OTHER LEVERAGE CERTIFICATES	19	20	1	20	-	11	0.6	25	17.6	171	34.2
INVESTMENT PRODUCTS	137	145	6	158	13	633	190.1	621	50.8	1,901	457.4
TOTAL	1,087	1,412	171	1,599	223	5,043	208.6	5,597	99.9	52,713	725.9
ISSUERS											
GOLDMAN SACHS & CO WERTPAPIER GMBH	1	1	-	3	2	2	0.13	5	1.47	11	3.19
GOLDMAN SACHS INTERNATIONAL	8	10	1	19	9	58	4.91	48	21.37	300	43.50
GOLDMAN SACHS JERSEY	16	13	-	13	-	3	0.02	1	0.01	18	1.72
MERRILL LYNCH INTERNATIONAL & CO CV	22	12	-	12	-	14	1.04	6	0.29	111	3.16
MERRILL LYNCH SA	8	7	-	7	-	2	0.00	2	0.21	18	0.39
ROYAL BANK OF SCOTLAND	295	445	36	532	87	1,589	189.81	1,706	58.04	10,200	302.58
SOCIETE GENERALE ACCEPTANCE NV	711	889	133	978	125	3,342	12.29	3,802	18.33	41,900	168.74
BARCLAYS BANK PLC	26	35	1	35	-	33	0.36	27	0.20	155	202.65
TOTAL	1,087	1,412	171	1,599	223	5,043	208.6	5,597	99.9	52,713	725.9

TURNOVER MONTHLY FIGURES - £m



TRADES MONTHLY FIGURES



Glossary

Plain Vanilla CW: Covered Warrants (Market Sector Code CVWT)
Other Leveraged Products: All leveraged products (Market Sector Code OTHE and OFLV) excluding covered warrants and knock out products

Knock-out Products: Knock-out products (Market Sector Code KNCK)
Investment Products: All investment products (Market Segment Code INSD). This includes Capital Protected, Trackers, Yield Enhancement and Participation

Market Information & Analysis
10 Paternoster Square, London. EC4M 7LS
T +44 207 7797 1435
email: statistics@londonstockexchange.com
www.londonstockexchange.com