



London
STOCK EXCHANGE

THE NATURAL SOURCE OF FINANCIAL DATA

Datalect™



Datalect - the natural source of financial data

The London Stock Exchange's Datalect suite incorporates a wide range of reference and historical data products:

- SEDOL Masterfile®
- Corporate actions
- Datasync™
- Company data
- Trade data
- Valuation data
- Market report service.

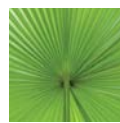
Our Datalect products are powered with robust data from the heart of the financial markets, ensuring you know what is happening in your own organisation and across the financial world. These products are widely trusted and are often used as the benchmark to drive decisions.



SEDOL Masterfile - uniquely identifying the world's reference data

The SEDOL Masterfile (SMF) is the Exchange's official code to identify global securities. It provides reference data on millions of global multi-asset securities, each uniquely identified at the market level by our universal SEDOL code. By collecting global reference data directly from source, SMF is designed to lower costs, streamline post-trade processing and settlement, and minimise the risk of cross-border trade failures.

The SEDOL code links front, middle and back offices within financial institutions worldwide. Thousands of SEDOL codes are proactively allocated daily and are linked to a range of other coding standards (eg ISIN, MIC, CFI and local exchange codes) to ensure reference data is captured on all asset classes across worldwide markets.



Corporate Actions - a track record in delivering corporate events

We are proud to be known as the premier source of high quality UK corporate action information. Through prompt notification of all corporate actions we enable you to keep your holdings up to date and meet clients' ever-increasing demands for timely information.

Providing detailed coverage of UK corporate actions, our products cover all London Stock Exchange instruments with over 50 corporate action types ranging from cash dividends to rights issues and complex company schemes.

Delivery of the data can be automated via SWIFT in the ISO15022 format, or accessed online through the Corporate Events Diary (CED).

Whichever service you choose you can be confident that you will promptly receive the highest quality information and in the format of your choice.



Trade Data - building an intricate historical trading data picture

The Exchange's rich source of trading information ensures our products are trusted, robust and accurate. With more than 10 years history, our trade data products provide you with the tools to build effective research databases and back test trading algorithms against real market conditions.



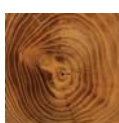
Datasync - the natural way to refresh your security data

Datasync consists of a range of services designed to provide advance notification of changes to the Exchange's trading system. This enables market participants to synchronise their trading database(s) before the market opens. By improving reference data quality and monitoring new IPOs, Datasync gives customers confidence in tracking new trading opportunities and minimises trade failures.

By ensuring that customer databases are up to date in readiness for the next day's trading, the service provides you with:

- pre-warning to register in new securities
- stock events affecting the securities you are registered in
- reliable and accurate information for efficient database management.

Every second of the trading day the London Stock Exchange generates masses of information - ranging from data on individual trades and share price movements to company announcements.



Valuation Data - discover the history of official list prices

From single security to multiple portfolio valuations, whether you are a pension fund manager, solicitor or a private investor, we can offer you a range of products to assist you including:

- The Daily Official List® (DOL) – a daily publication of official DOL quotations for all securities traded on the London Stock Exchange.
- The Historic Price Service (HPS) – provides online access to request individual DOL quotations for all securities traded on the London Stock Exchange going back to 1982.
- The Probate Calculator – a web-based service to value an estate's shareholding and automate the production of the HM Revenue and Customs official mandatory D7 form.

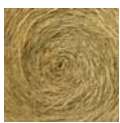


Company Data - delivering essential UK listed company data

With over 3,000 companies listed on our markets, no other source offers more comprehensive financial data on UK-listed companies than the London Stock Exchange. We deliver in-depth data straight from the source within hours of publication, helping you:

- evaluate a company's performance to identify early investment opportunities
- build customer contact databases to track director activities
- develop financial models.

Providing data direct from the source, Exchange data is a valuable source of information for financial professionals.



Market Report Service - Your daily round up of trading activity

The Exchange's Market Report Service (MRS) has been specifically designed to provide you with timely updates on important information impacting your company's share price.

Gathering important financial markets information about your company can be extremely time consuming and very costly. It becomes simple with MRS. At the end of each trading day a professional formatted report is sent by email directly to your desktop, including the following information for you and your peer group:

- share price performance
- news and trading activity analysis
- share ownership data
- broker forecasts.

The structure of the report is flexible and can be customised to your exact requirements, helping you provide senior managers with the key financial performance indicators to manage the success of your business and benchmark yourselves against your peers.

Please see the enclosed information sheets for more details on the products within the Datalect suite.

Alternatively if you would like to discuss how our data products can help fulfil your business requirements, please contact us on:

Tel : +44 (0)20 7797 1220, STX 31220

Email: datalect@londonstockexchange.com



London
STOCK EXCHANGE



Copyright © January 2008 London Stock Exchange plc.
Registered in England and Wales No. 2075721.

London Stock Exchange plc has used all reasonable efforts to ensure that the information contained in this publication is correct at the time of going to press, but shall not be liable for decisions made in reliance on it.

Datalect is a trade mark of London Stock Exchange plc.

London Stock Exchange, the coat of arms device, SEDOL Masterfile and the Daily Official List are registered trade marks of London Stock Exchange plc.

London Stock Exchange
10 Paternoster Square
London EC4M 7LS
Telephone: +44 (0)20 7797 1000

www.londonstockexchange.com

REF/COL/116