



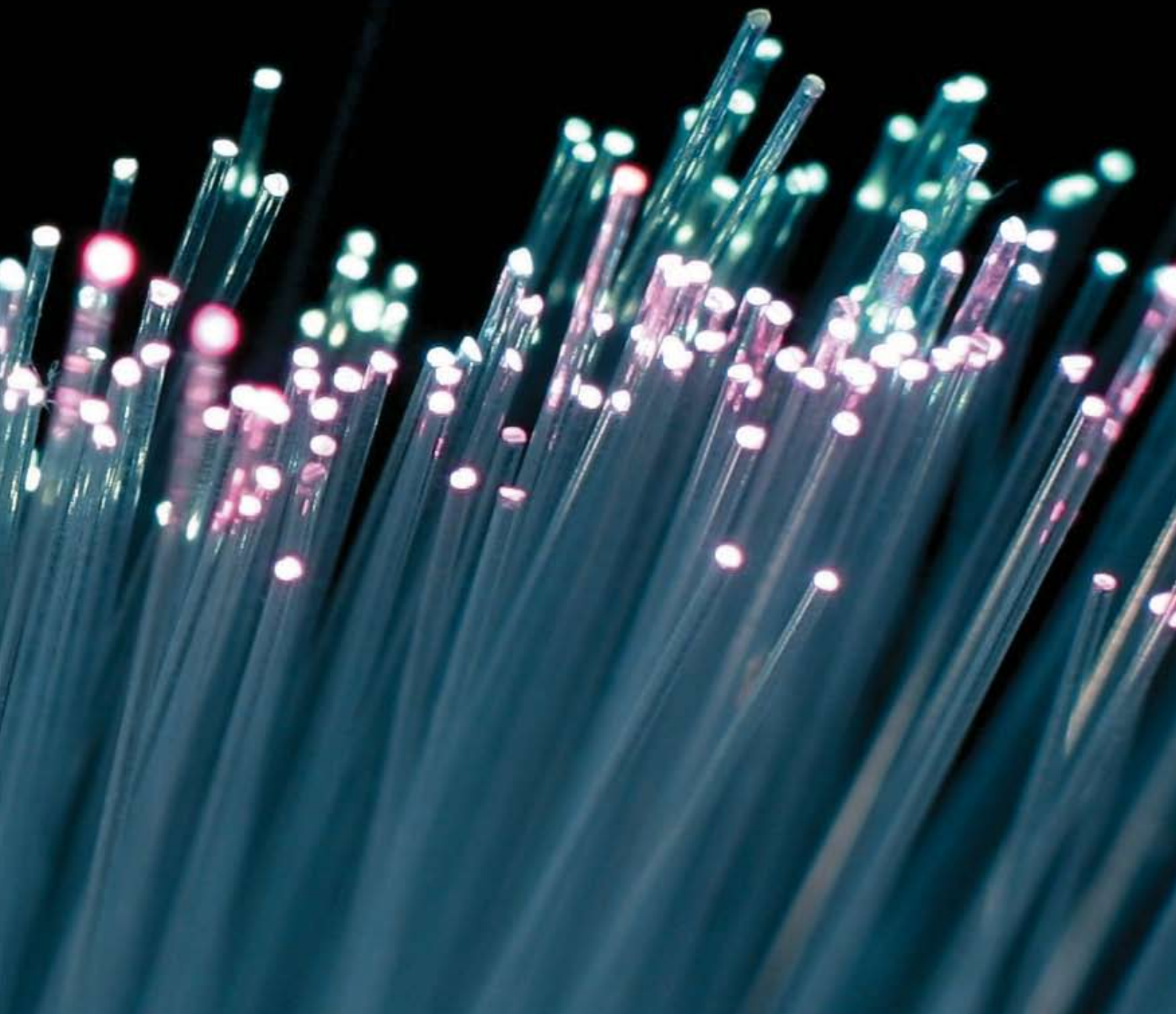
*London*  
**STOCK EXCHANGE**

THE FASTEST ROUTE TO OUR MARKETS

**Extranex**



Extranex is our dedicated, fully-managed connectivity solution for access to TradElect™ and Infolect™ – providing resilience and lowest latency, it offers consistency and peace of mind.



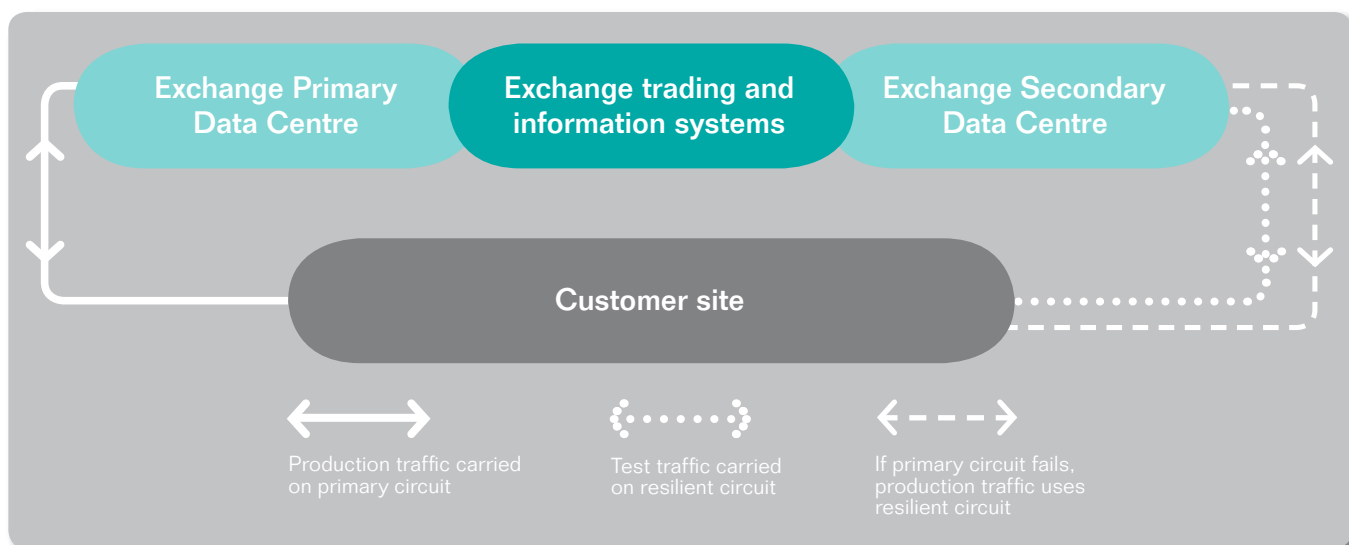
Extranex is the fully-managed private network used by the London Stock Exchange to provide access to TradElect and Infolect, our trading and information systems.

### Latest technology

Extranex services are based on the very latest network technology. They feature carrier optical fibre-based technology that minimises latency between the customer and the Exchange and promotes efficient trading. The equipment we provide for use at our customer's sites is the most up-to-date available. In short, Extranex is designed to ensure you are never out of step with your competitors or the market.

### Flexible service

Extranex comes in a range of speeds to meet a customer's specific requirements. Low cost 64k and 128k services provide access for order entry and trade reports, while higher speed services up to 100Mb are available to carry the Exchange's comprehensive market data. A standard (resilient) Extranex service also gives access to our testing systems, but a dedicated connection to testing services is also available for customers wishing to separate their production and development connectivity.



### Data quality

Every Extranex customer receives their data direct from the market, tick-by-tick without delays or processing. This gives the most accurate and authentic view of the market possible and the assurance that the information supplied is the same as the data sent to every other Extranex customer.

### Dedicated connectivity

As a dedicated connection, Extranex delivers bandwidth solely for transmission of data between the Exchange and our customers. Our customers also have the peace of mind of knowing that the Exchange will only ever intervene with the service out of hours and with their authorisation. The net result is that service down-time is minimised and customers are guaranteed uninterrupted access to the Exchange's systems.

### Resilient service

The standard Extranex service is designed to offer the most resilient connection and reduce the risk of a single point of failure compromising a customer's connectivity. The service is based on a diverse pair of circuits provided using Ethernet over SDH (via different tier 1 carriers wherever possible).

### Connecting to Extranex

For more information on connecting to Extranex, visit [www.londonstockexchange.com/extranex](http://www.londonstockexchange.com/extranex) or contact us on +44 (0)20 7797 3211 or by email at [infosales@londonstockexchange.com](mailto:infosales@londonstockexchange.com)



*London*  
**STOCK EXCHANGE**

Copyright © September 2007 London Stock Exchange plc.  
Registered in England and Wales No. 2075721.

London Stock Exchange plc has used all reasonable efforts to ensure that the information contained in this publication is correct at the time of going to press, but shall not be liable for decisions made in reliance on it.

London Stock Exchange, the coat of arms device and Extranex are registered trade marks of London Stock Exchange plc.

London Stock Exchange  
10 Paternoster Square  
London EC4M 7LS  
Telephone: +44 (0)20 7797 1000  
[www.londonstockexchange.com](http://www.londonstockexchange.com)